



ASSEMBLY INSTRUCTIONS COASTER FINE FURNITURE



Fine Furniture for every stage of life

REVISION 0: 12/23/2016
REVISION 1: 05/20/2019
REVISION 2: 11/30/2019
REVISION 3: 12/14/2019
REVISION 4: 08/15/2022
REVISION 5: 12/24/2024
REVISION 6: 02/06/2025

PAGE 1 OF 4

107283

ARM CHAIR

COASTERFURNITURE.COM

ITEM:107283



ASSEMBLY INSTRUCTIONS

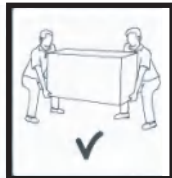
ASSEMBLY TIPS:

1. Remove hardware from box and sort by size.
2. Please check to see that all hardware and parts are present prior to start of assembly.
3. Please follow attached instructions in the same sequence as numbered to assure fast & easy assembly.



WARNING!

1. Don't attempt to repair or modify parts that are broken or defective. Please contact the store immediately.
2. This product is for home use only and not intended for commercial establishments.



ASSEMBLY TIME

10 MINUTES

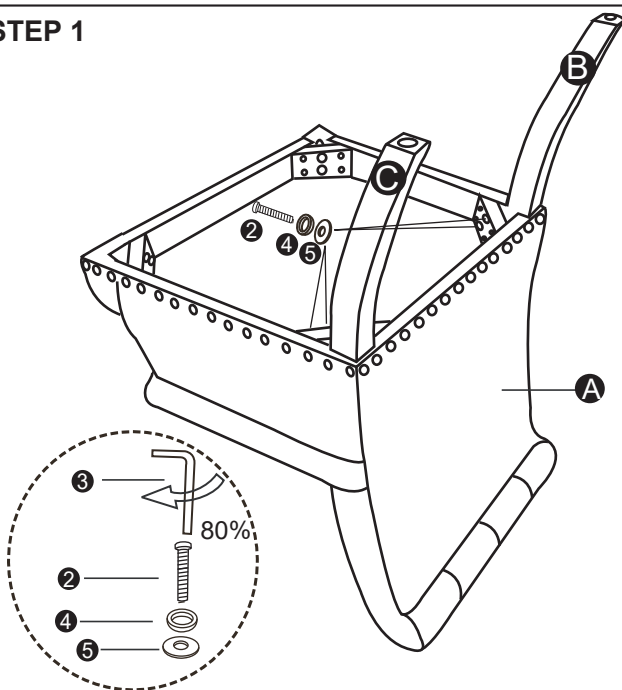
PARTS IDENTIFICATION

A		SEAT AND BACK	1PC
B		BACK RIGHT LEG	1PC
C		BACK LEFT LEG	1PC
D		FRONT LEG	2PCS

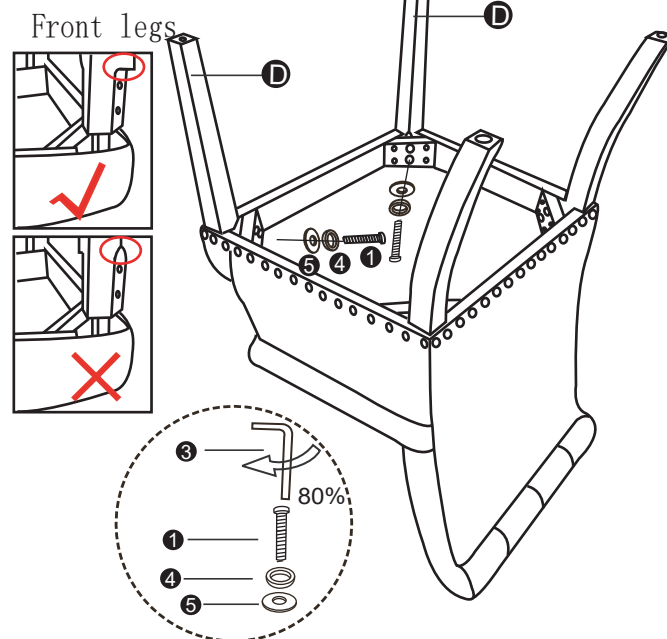
HARDWARE IDENTIFICATION

1		LARGE BOLT (M8×65mm)	4PCS
2		SMALL BOLT (M8×60mm)	4PCS
3		ALLEN KEY (M8)	1PC
4		LOCK WASHER (Φ8)	8PCS
5		FLAT WASHER (Φ8)	8PCS

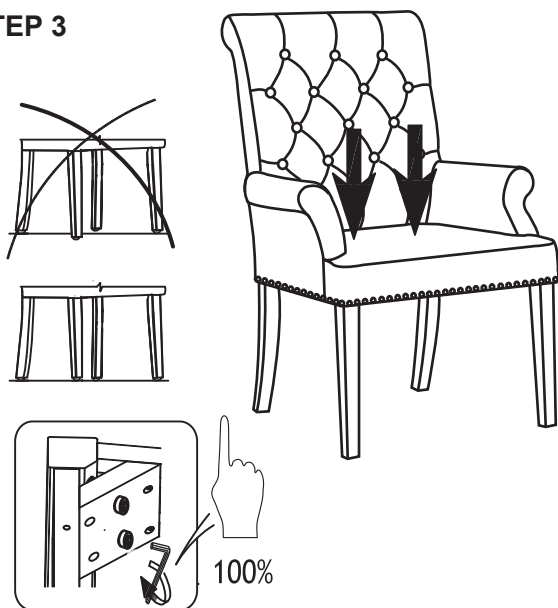
STEP 1



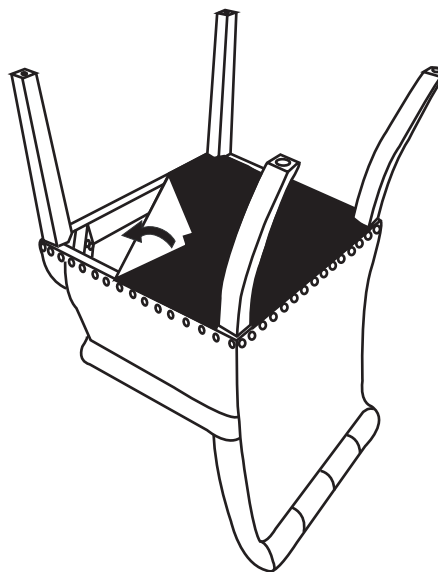
STEP 2



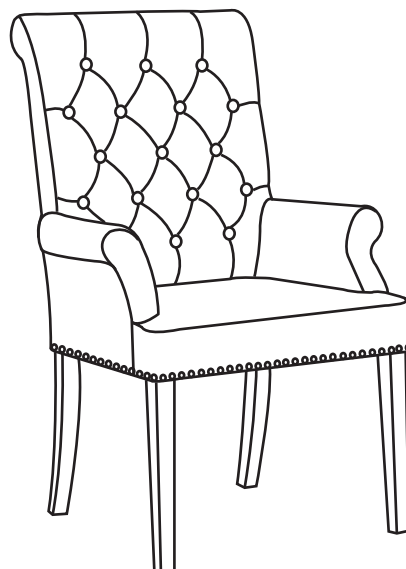
STEP 3



STEP 4



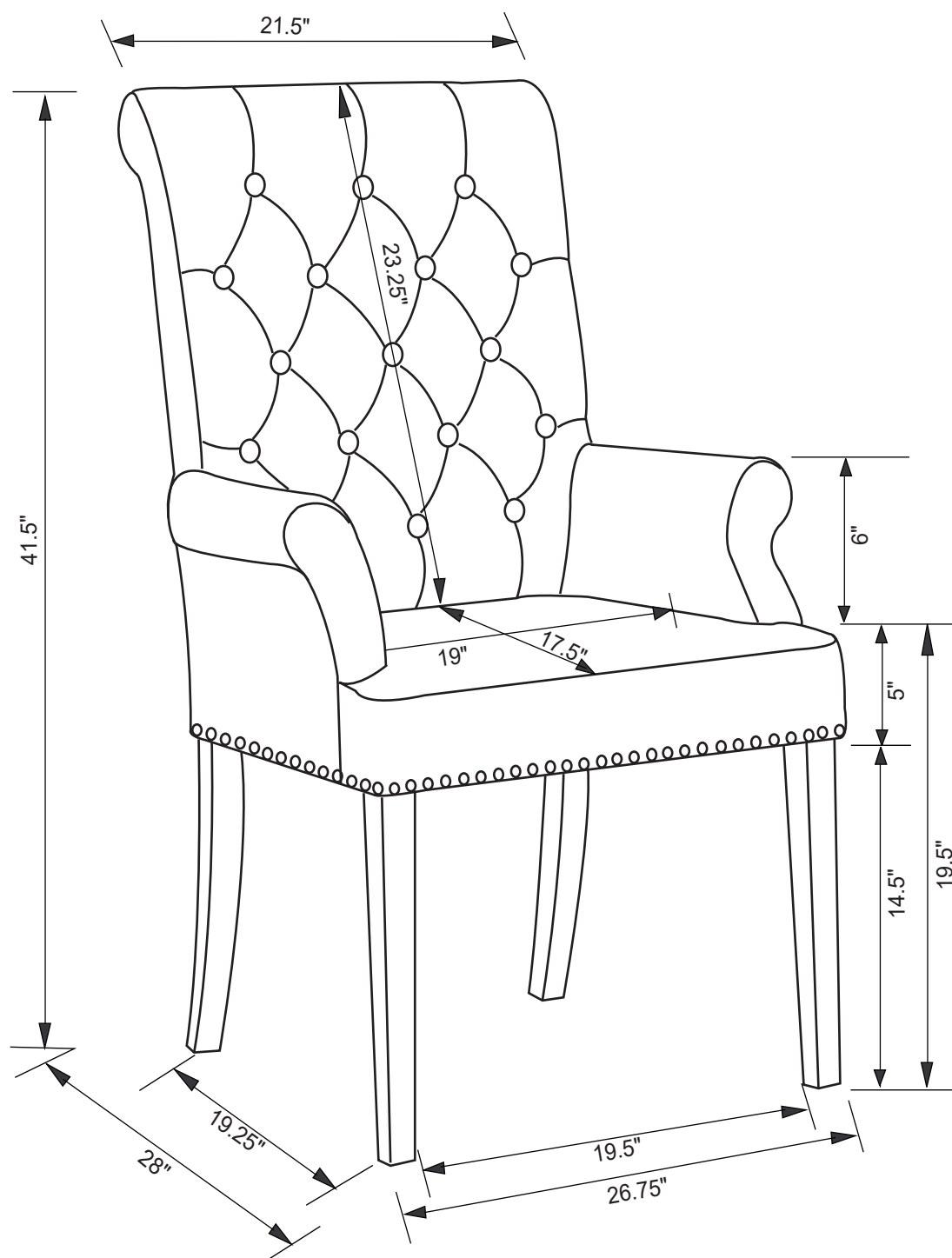
STEP 5



ITEM: **107283**



ASSEMBLY INSTRUCTIONS



Note : Dimension tolerance $\pm 5\%$