



## ASSEMBLY INSTRUCTIONS COASTER FINE FURNITURE



*Fine Furniture for every stage of life*

**204392**  
**Nightstand**

REVISION 0 : 10/30/2015  
REVISION 1 : 01/21/2020  
REVISION 2 : 11/17/2025

PAGE 1 OF 3

COASTERFURNITURE.COM

ITEM: **204392**



## ASSEMBLY INSTRUCTIONS

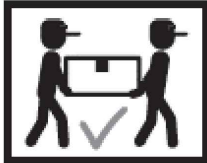
### ASSEMBLY TIPS:

- 1 . Remove hardware from box and sort by size.
- 2 . Please check to see that all hardware and parts are present prior to start of assembly.
- 3 . Please follow attached instructions in the same sequence as numbered to assure fast & easy assembly.



### WARNING !

- 1 . Don't attempt to repair or modify parts that are broken or defective. Please contact the store immediately.
- 2 . This product is for home use only and not intended for commercial establishment.

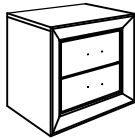


ASSEMBLY TIME

20 MINUTES

## PARTS IDENTIFICATION

A NIGHTSTAND



1PC

B RIGHT FRONT LEG  
(WITH FR LABEL)



1PC

C LEFT FRONT LEG  
(WITH FL LABEL)



1PC

D RIGHT BACK LEG  
(WITH BR LABEL)



1PC

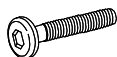
E LEFT BACK LEG  
(WITH BL LABEL)



1PC

## HARDWARE IDENTIFICATION

1 BOLT  
(M6 x 35mm - BLK)



8PCS

3 FLAT WASHER  
(1/4" x 20mm - BLK)



8PCS

2 LOCK WASHER  
(1/4" - BLK)



8PCS

4 ALLEN WRENCH  
(M4 x 100mm - BLK)



1PC

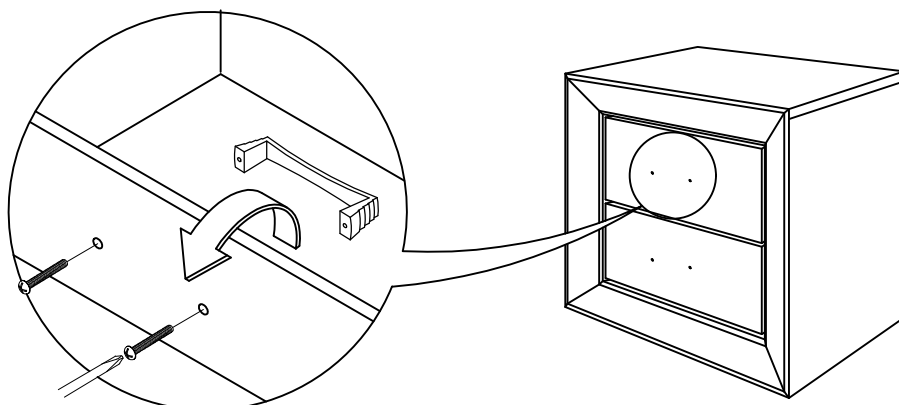
### NOTE:

Philips head screw driver in the assembly process ; however, manufacturer does not provide the item

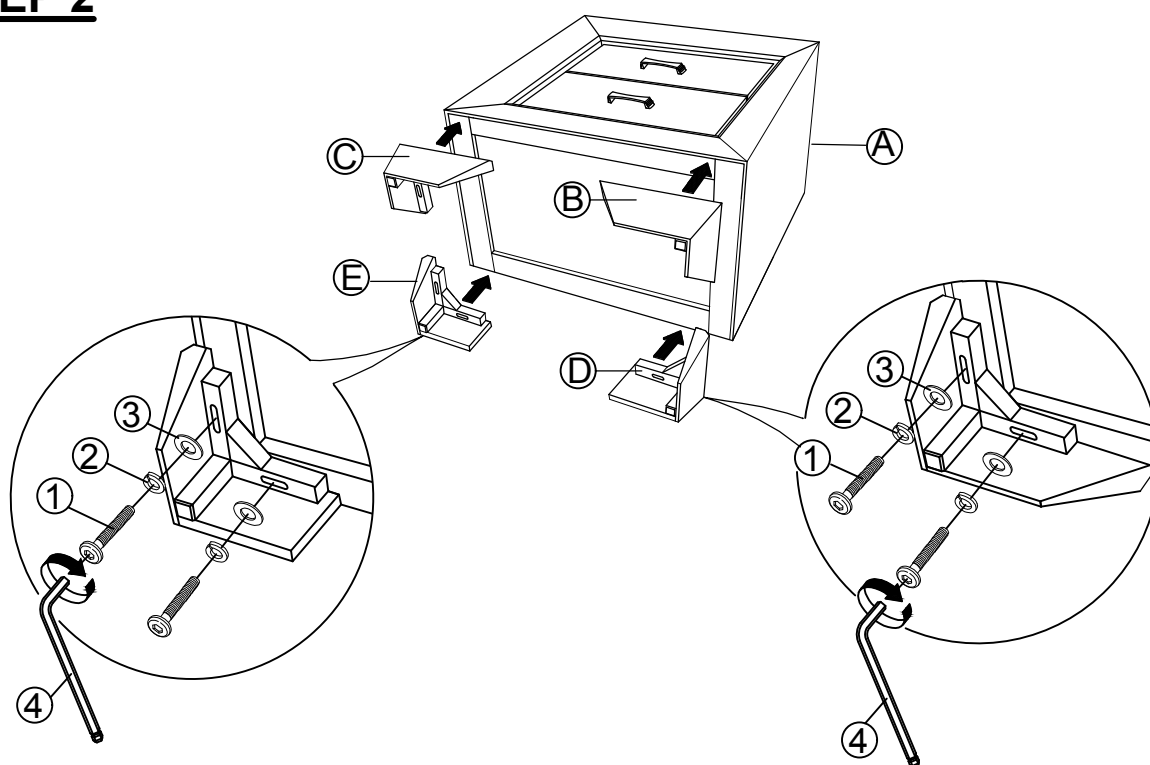
# ITEM: 204392

## ASSEMBLY INSTRUCTIONS

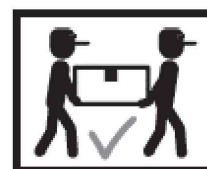
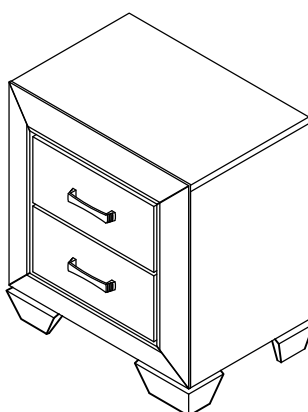
### STEP 1



### STEP 2



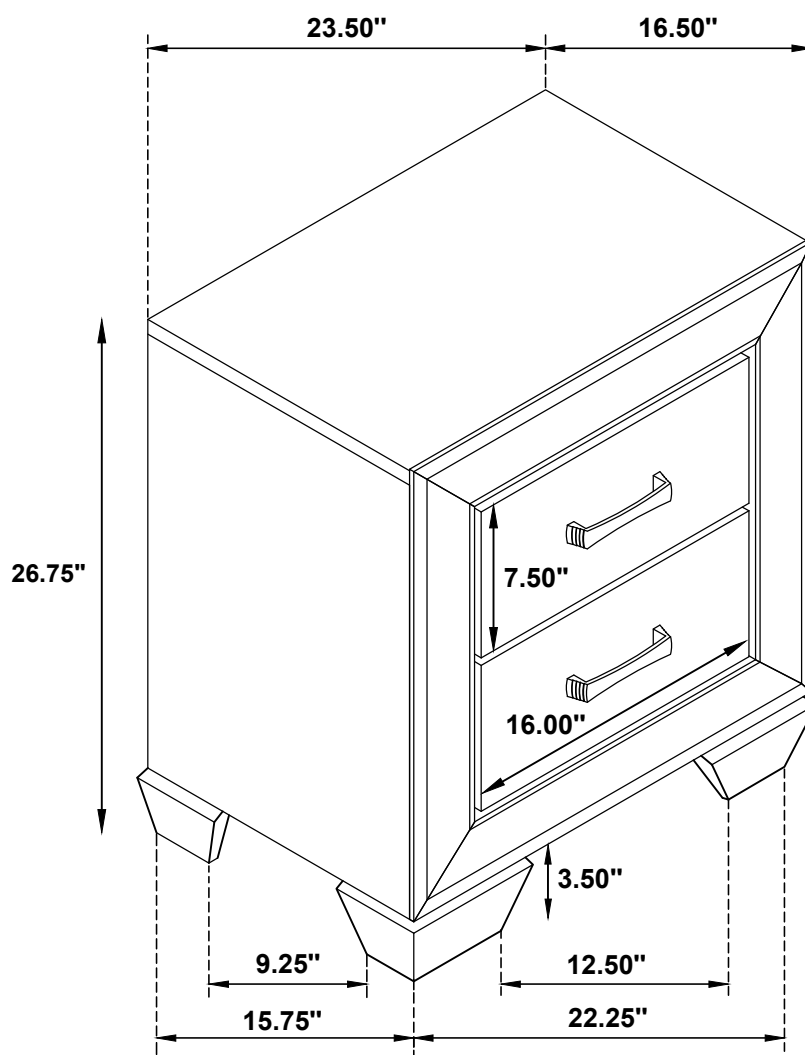
### STEP 3 COMPLETE



ITEM: **204392**



Inner Size Of Drawer : 12.75"W X 12.75"D X 5.00"H X 0.25"T



Note : Dimension tolerance  $\pm 5\%$