

*ASSEMBLY INSTRUCTIONS
COASTER FINE FURNITURE*



Fine Furniture for every stage of life

706222
TV STAND

ITEM:706222

ASSEMBLY INSTRUCTIONS

ASSEMBLY TIPS:

1. Remove hardware from box and sort by size.
2. Please check to see that all hardware and parts are present prior to start of assembly.
3. Please follow attached instructions in the same sequence as numbered to assure fast & easy assembly.



WARNING!

1. Don't attempt to repair or modify parts that are broken or defective. Please contact the store immediately.
2. This product is for home use only and not intended for commercial establishments.

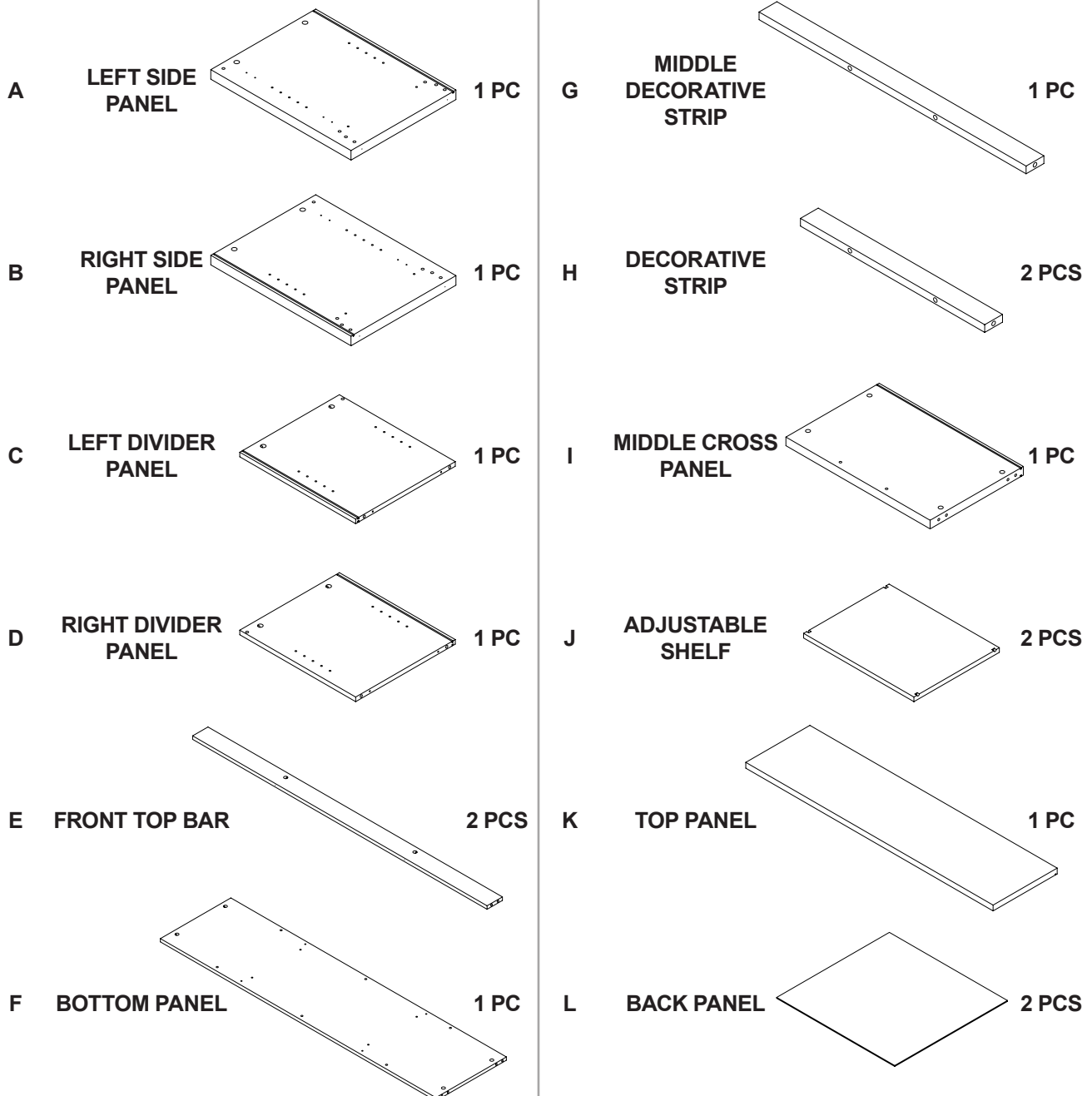


ASSEMBLY TIME

60 MINUTES

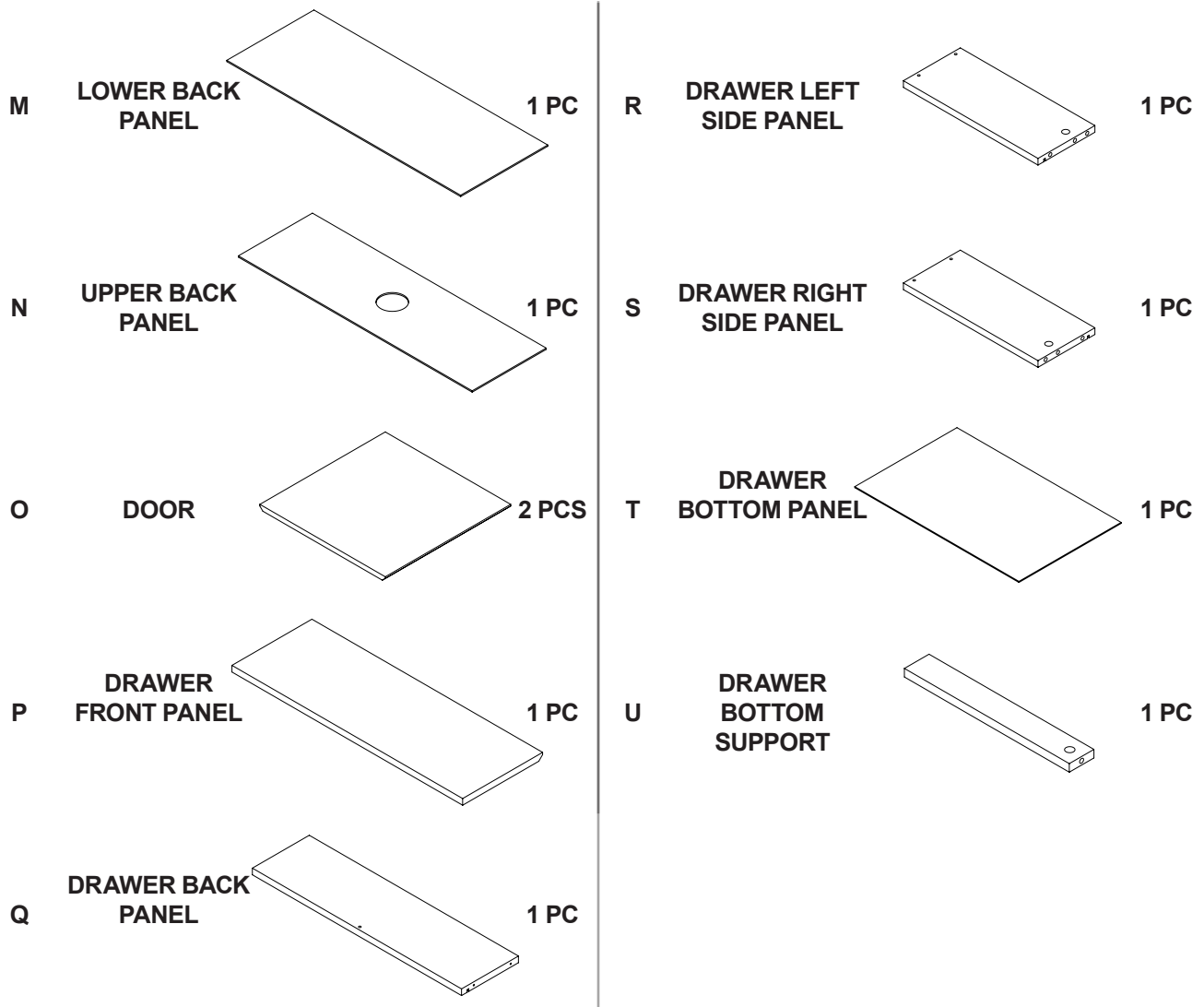
MAX TV SIZE : 65"

PARTS IDENTIFICATION



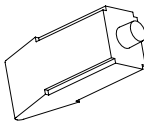
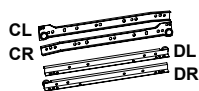
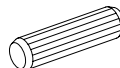
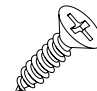
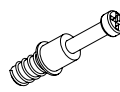
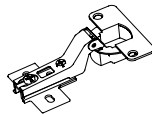

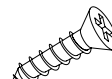

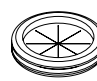

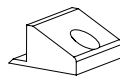


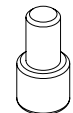
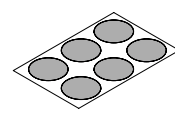
NOTE:

Phillips head screw driver is required in the assembly process; however, manufacturer does not provide this item.



ITEM:706222

HARDWARE IDENTIFICATION

Z							
NO	DESCRIPTION	FIGURE	Q'TY	NO	DESCRIPTION	FIGURE	Q'TY
1	GLUE 40g		1 PC	9	GLIDES L = 350mm BLK		1 SET
2	WOODEN DOWEL Ø8 x 30mm		50 PCS	10	GLIDES SCREW Ø3x12mm BLK		12 PCS
3	CAM BOLT Ø7 x 35.5mm SR		23 PCS	11	HINGE Ø35mm SR		4 PCS
4	CAM LOCK Ø15 x 12mm SR		23 PCS	12	HINGE SCREW Ø4 x 15mm SR		16 PCS
5	LONG SCREW Ø4.5x42mm SR		4 PCS	13	PLASTIC COVER Ø 52mm		1 PC
6	SCREW Ø4.3x35mm SR		5 PCS	14	BACK PANEL SUPPORT		6 PCS
7	PLASTIC FEET Ø15mm		6 PCS	15	BACK PANEL SUPPORT SCREW Ø3 x 19mm SR		6 PCS
8	PIN FOR ADJUSTABLE SHELF Ø4.9x8mm SR		8 PCS	16	STICKER Ø20mm		4 PCS

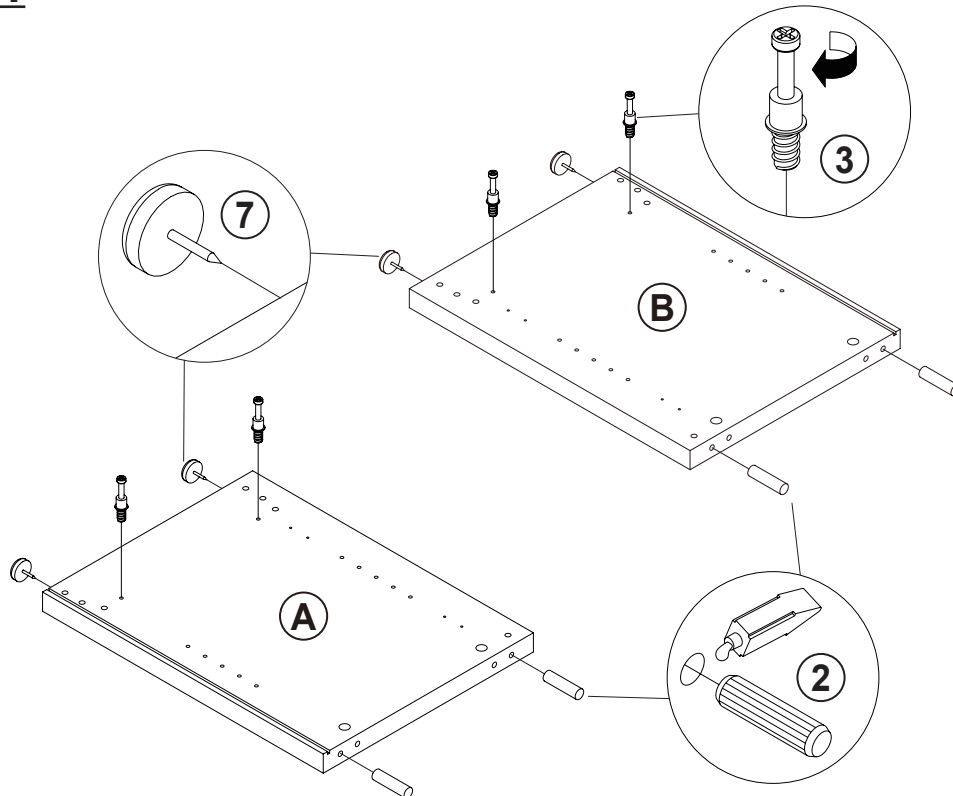
Z9, Z11, Z13 not included in blister packaging.

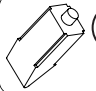
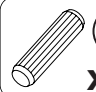
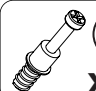

NOTE:

Phillips head screw driver is required in the assembly process; however, manufacturer does not provide this item.

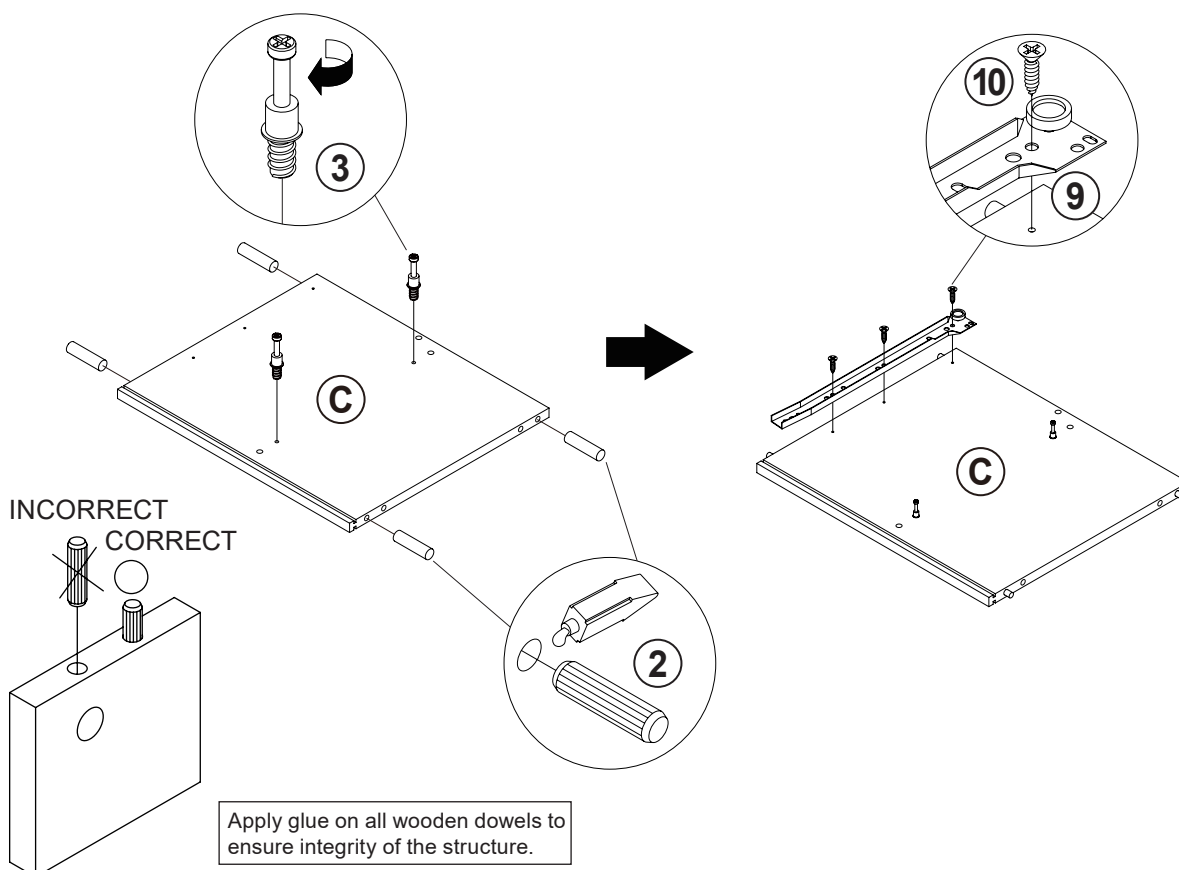
ITEM: **706222**

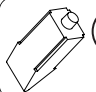



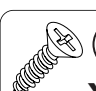
STEP 1



-  **1**
-  **2**
x 4
-  **3**
x 4
-  **7**
x 4

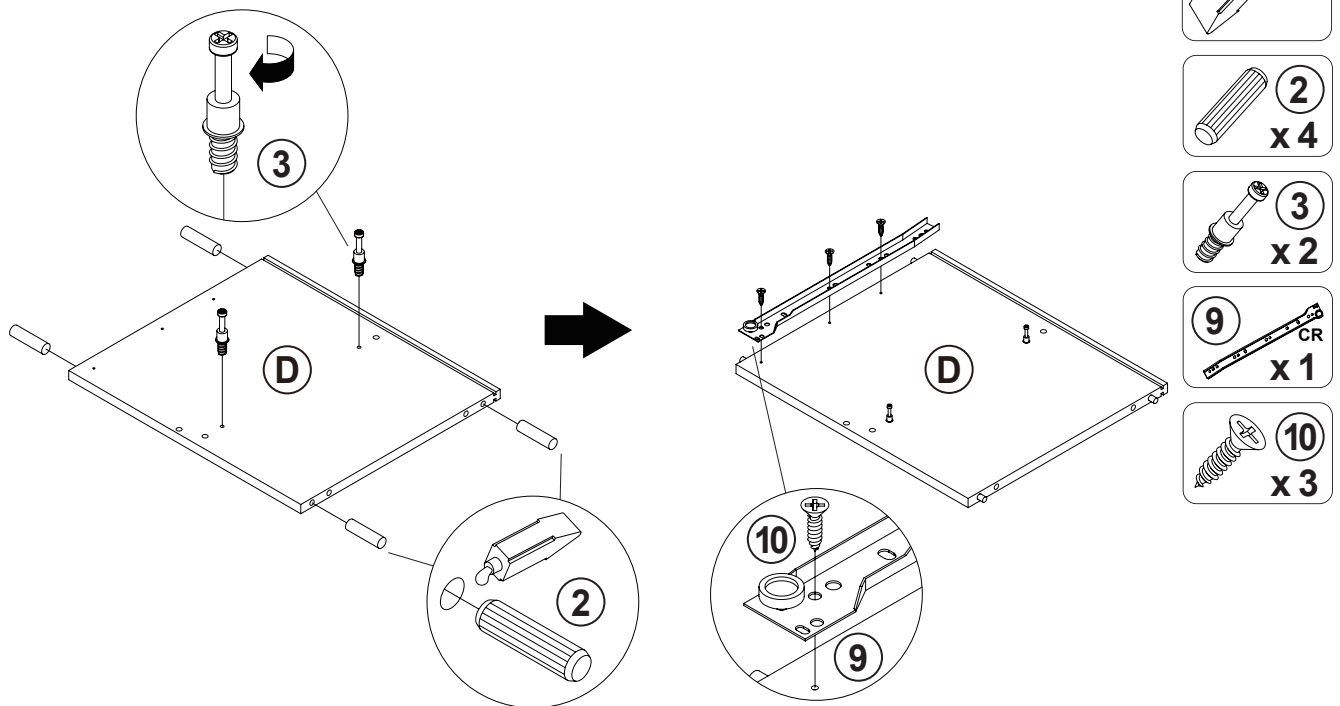
STEP 2



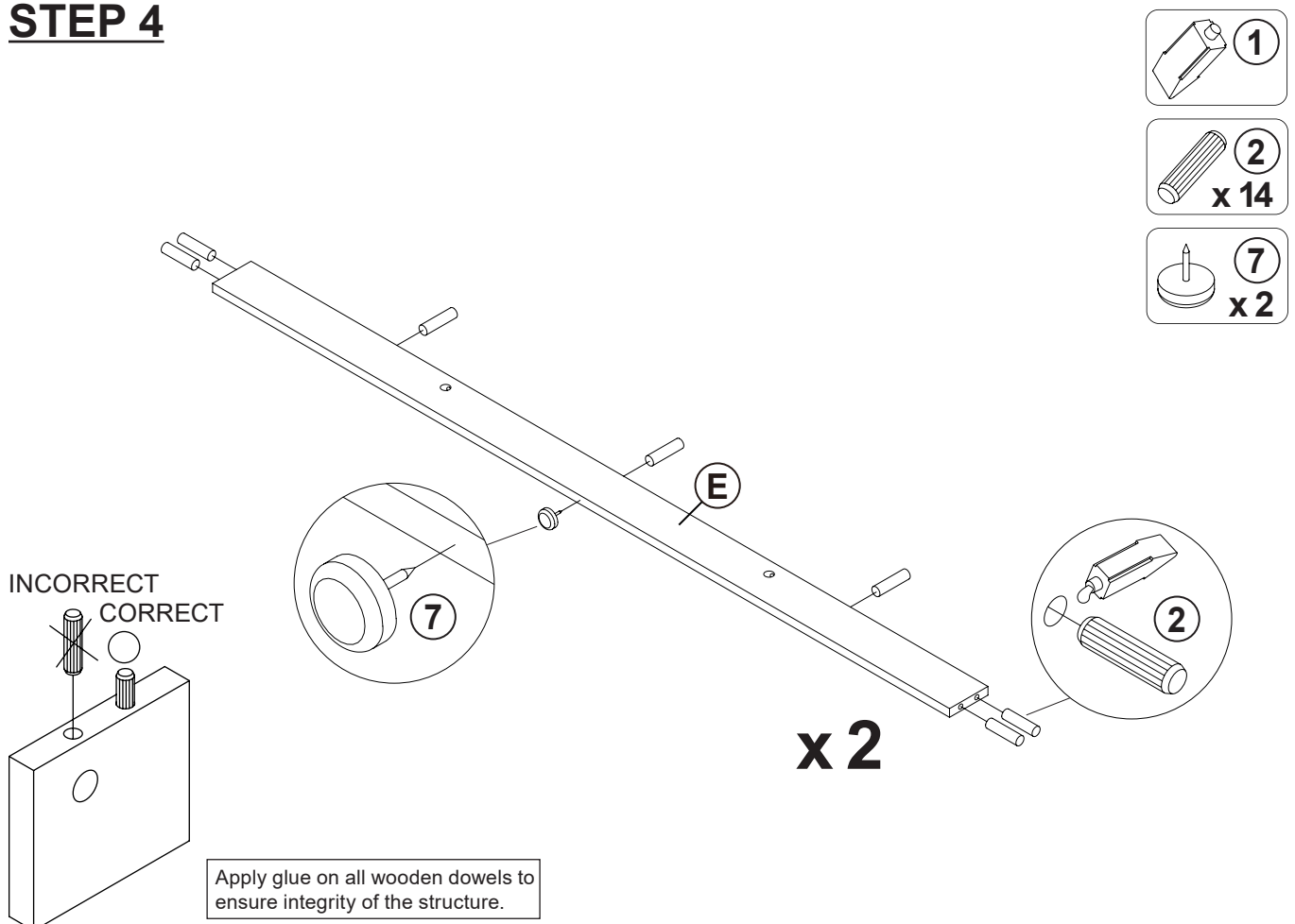
-  **1**
-  **2**
x 4
-  **3**
x 2
-  **9**
x 1
-  **10**
x 3

ITEM: **706222**

STEP 3

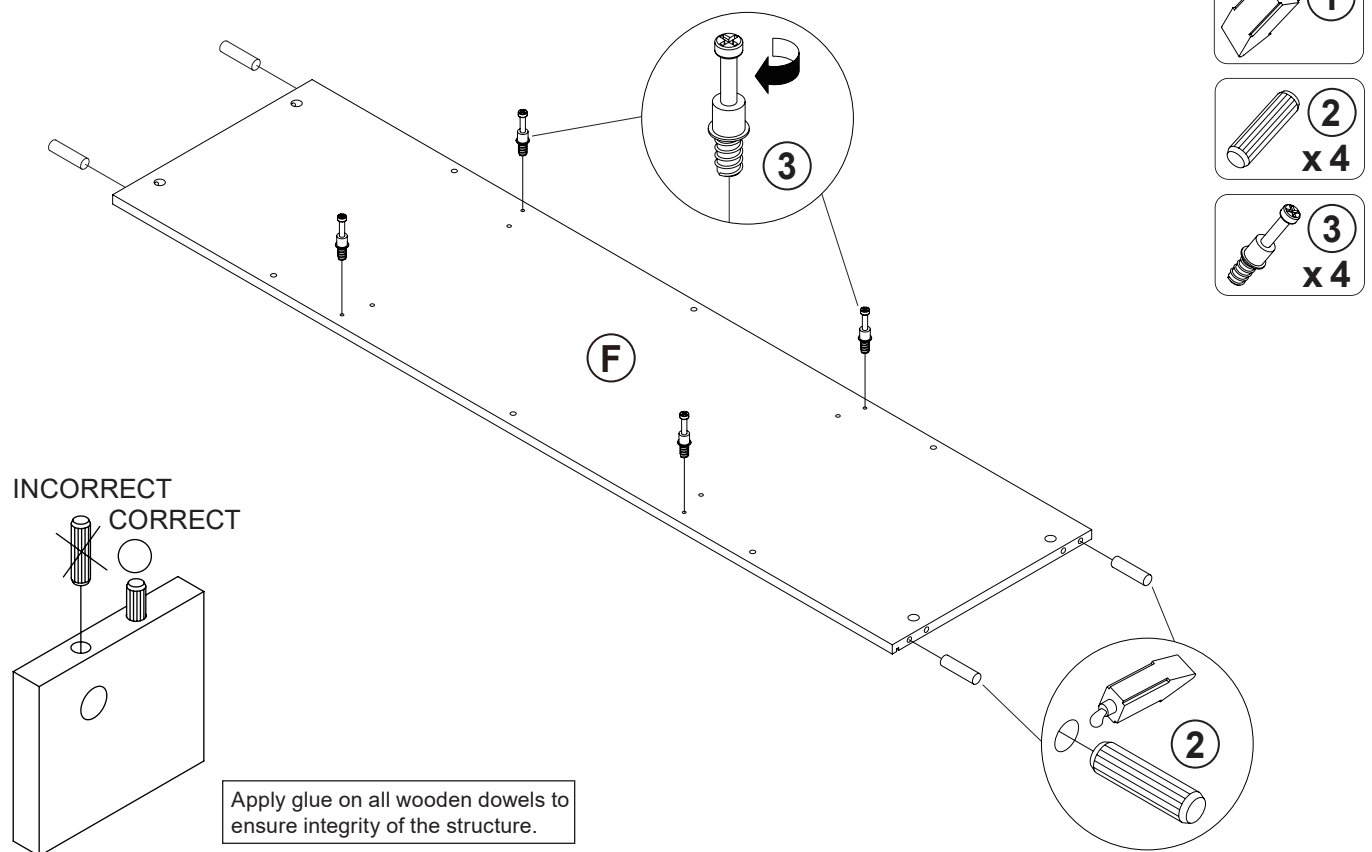


STEP 4

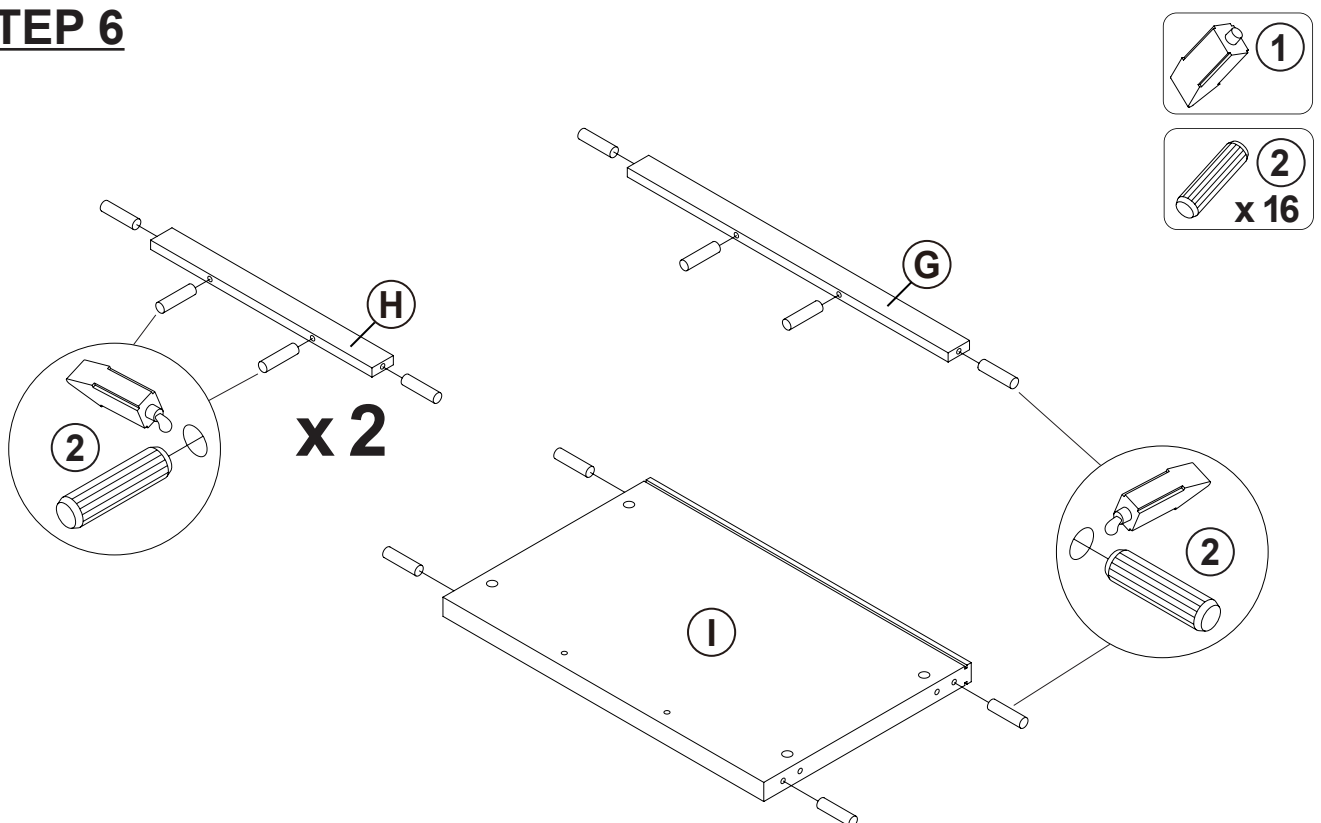


ITEM: **706222**

STEP 5



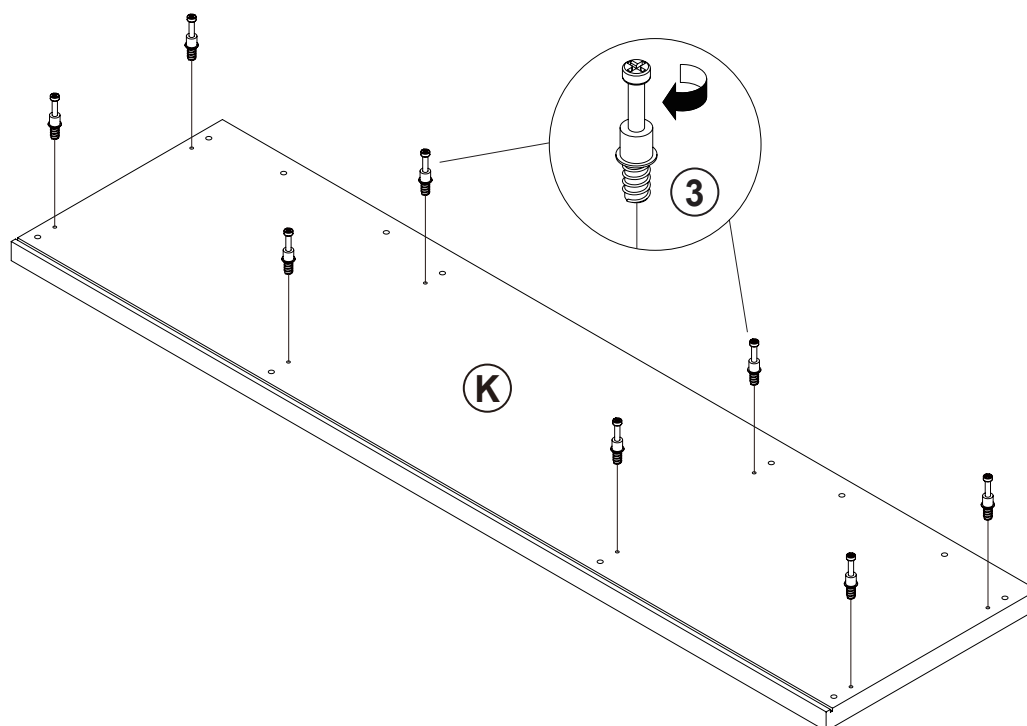
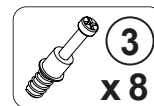
STEP 6



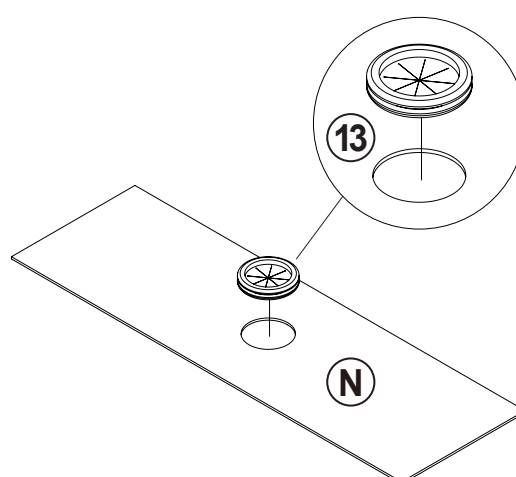
ITEM: **706222**

STEP 7

COASTER
FINE FURNITURE

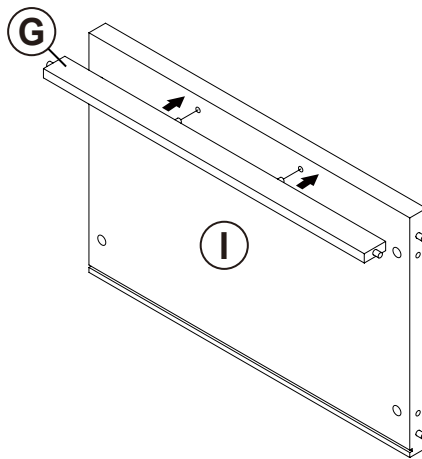


STEP 8

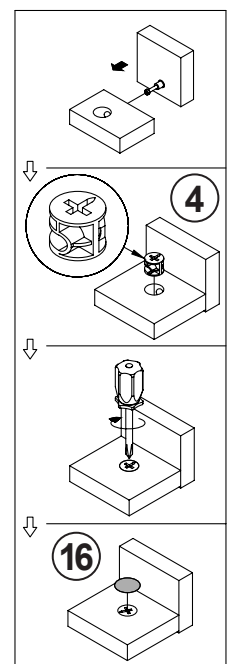
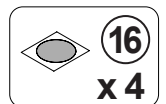
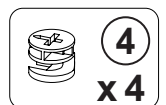
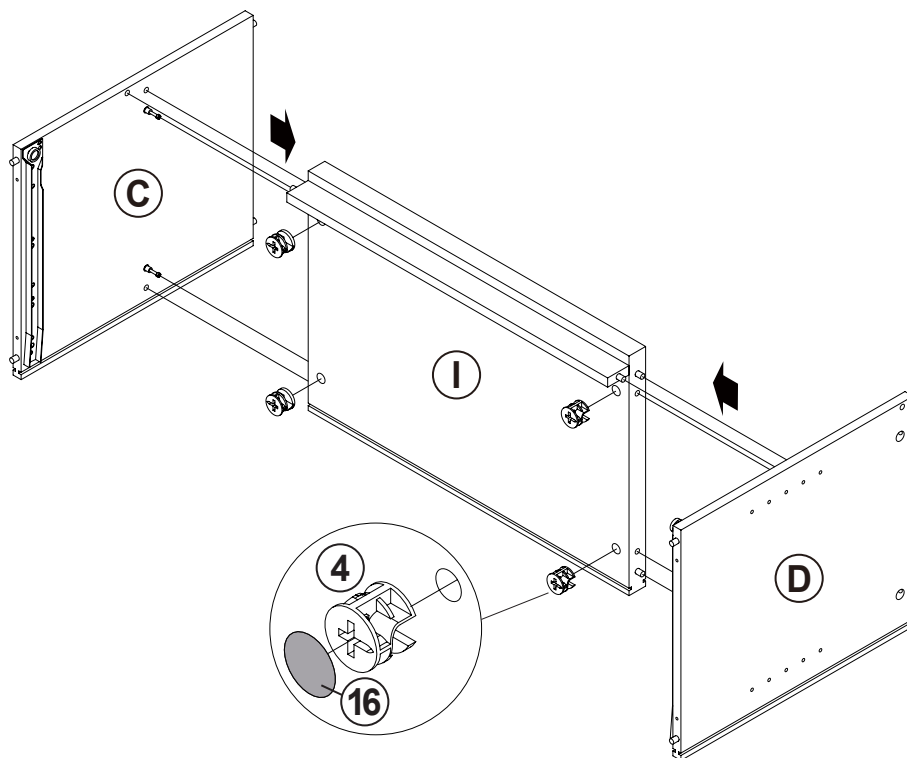


ITEM: **706222**

STEP 9



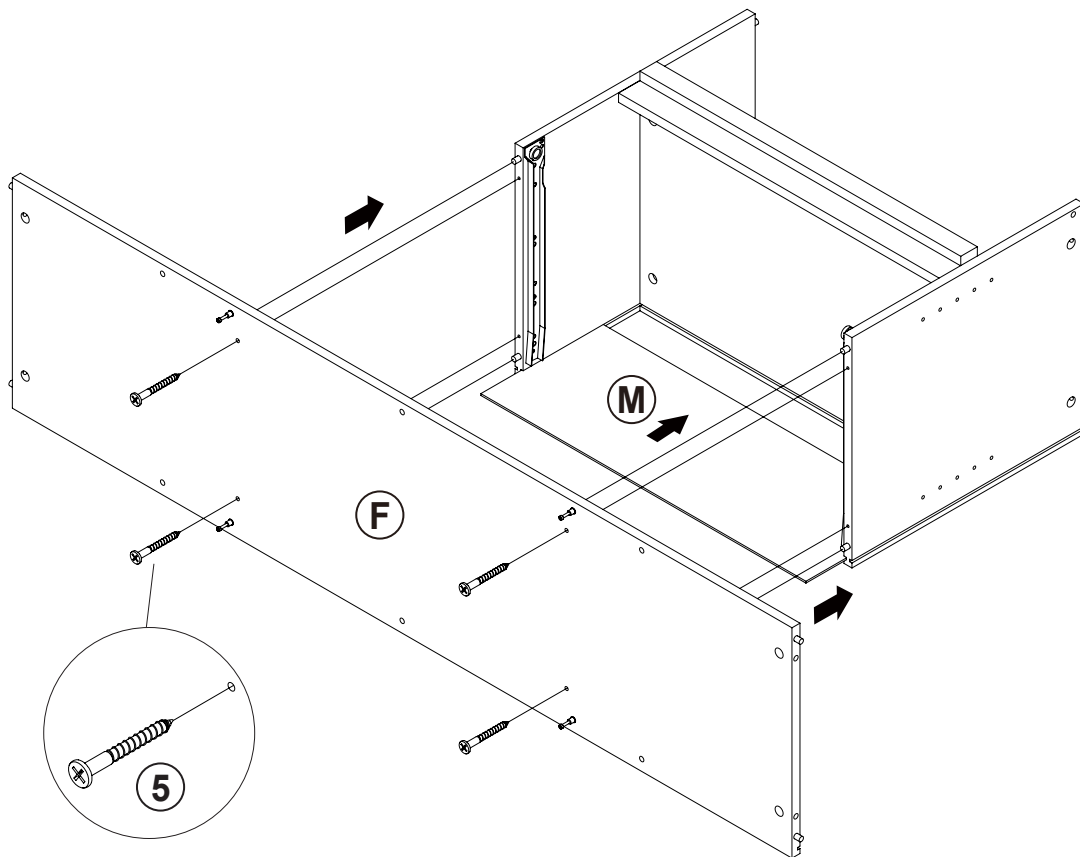
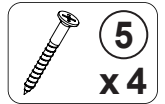
STEP 10



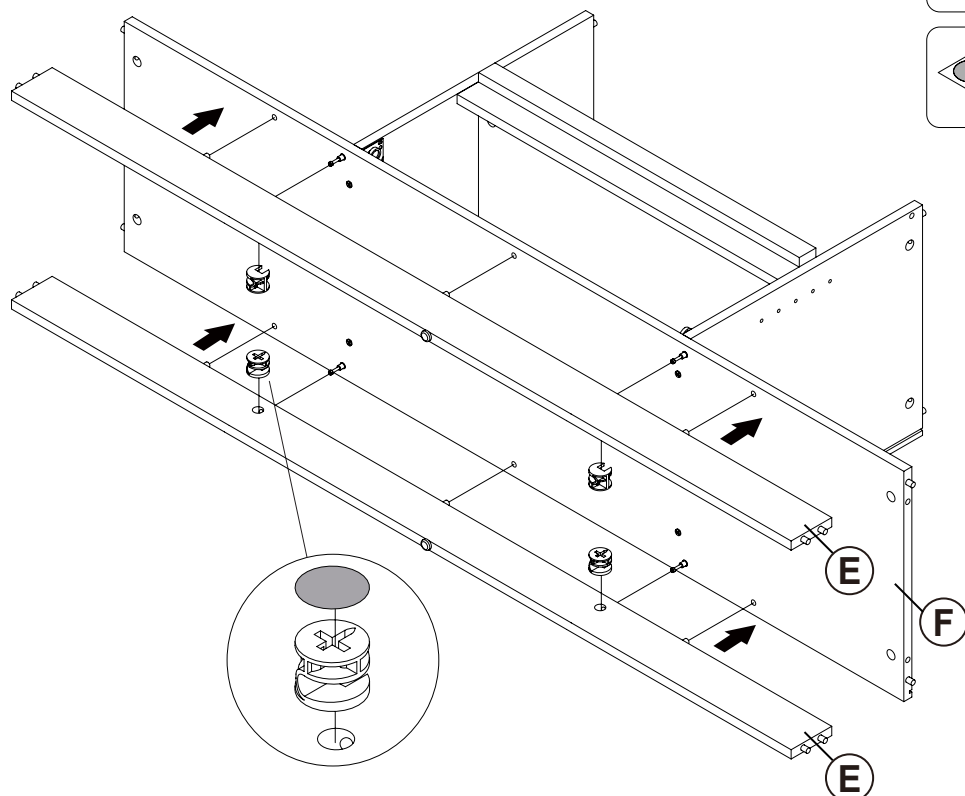
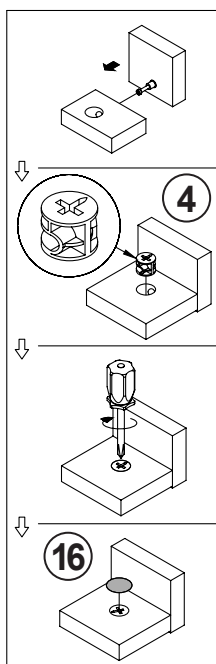
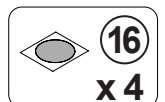
ITEM: **706222**

COASTER
FINE FURNITURE

STEP 11



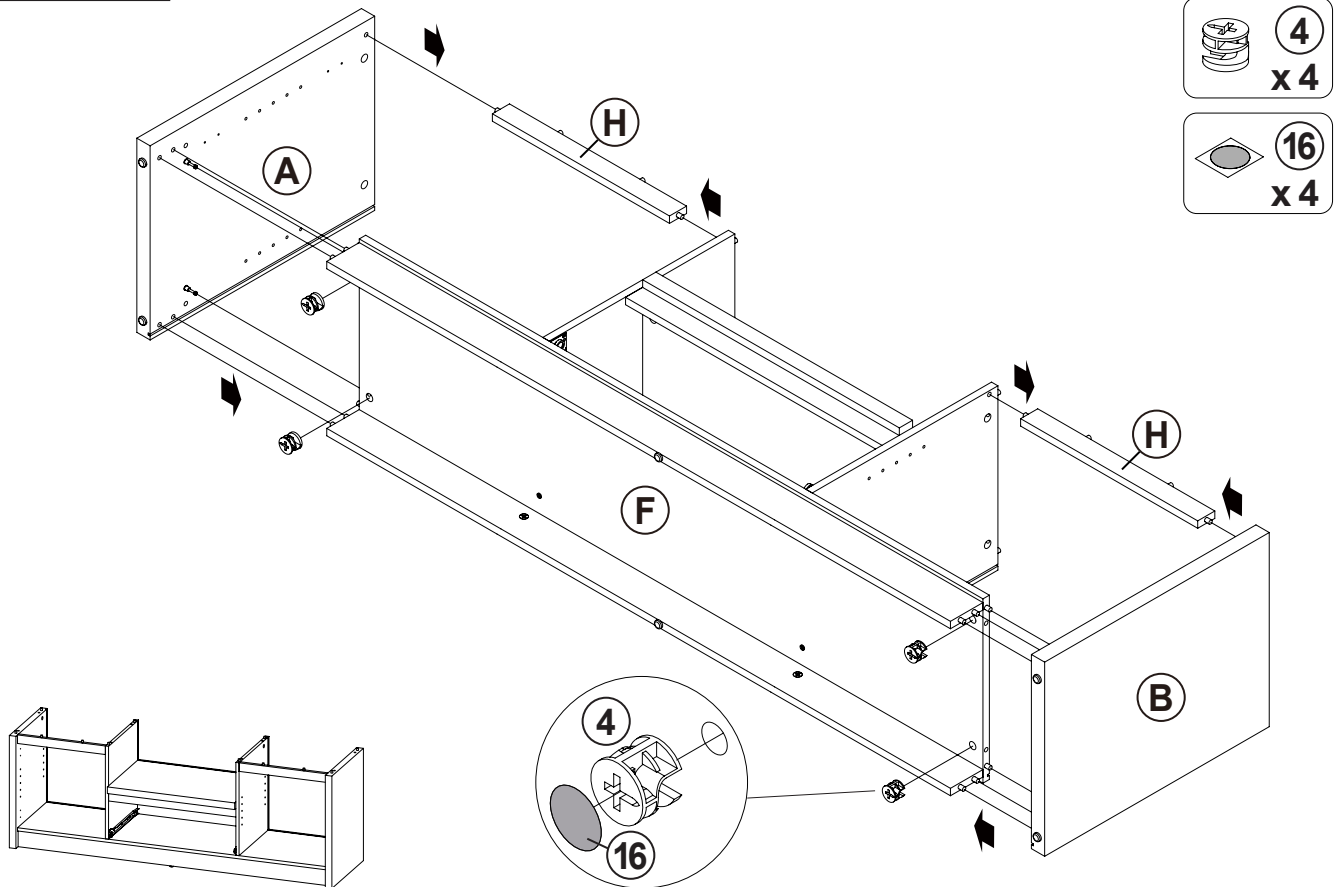
STEP 12



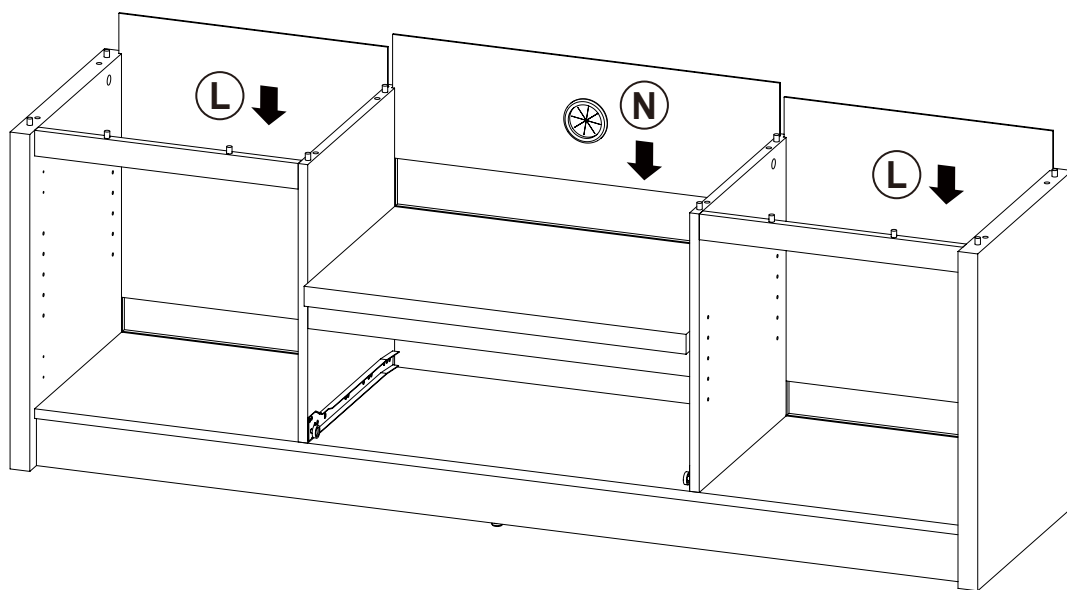
ITEM: **706222**

COASTER
FINE FURNITURE

STEP 13



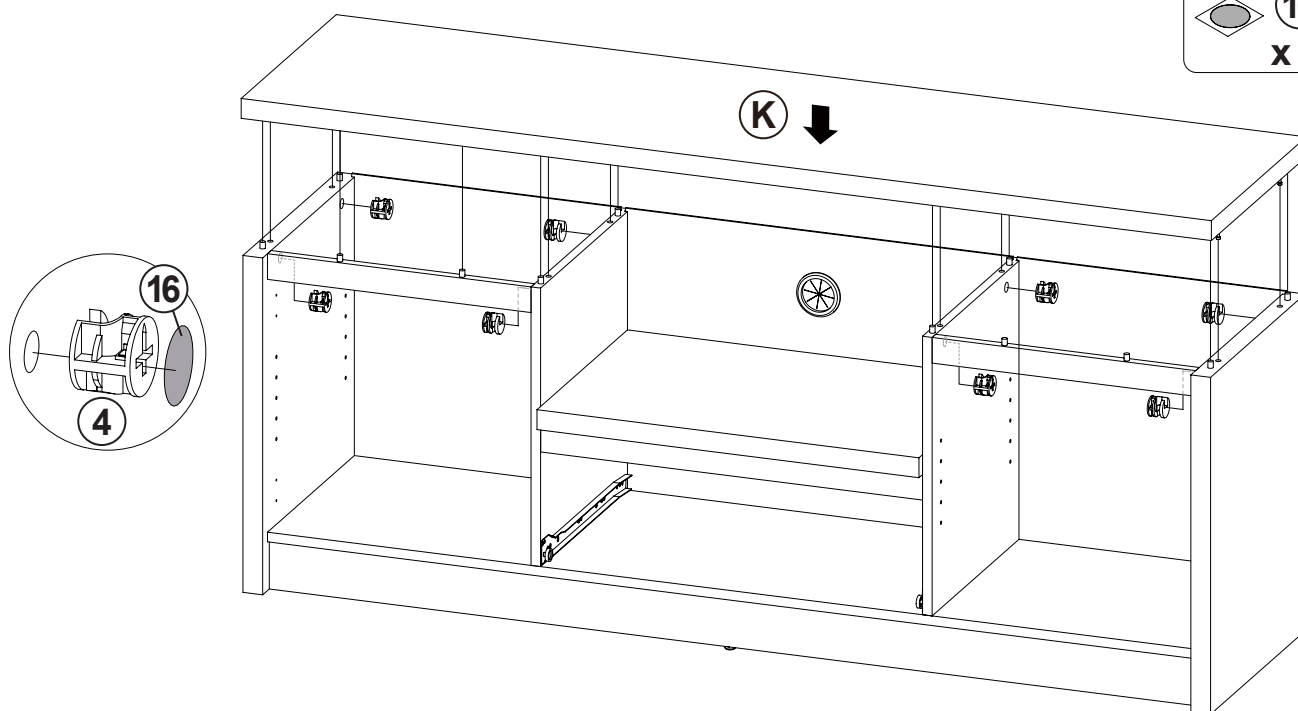
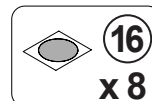
STEP 14



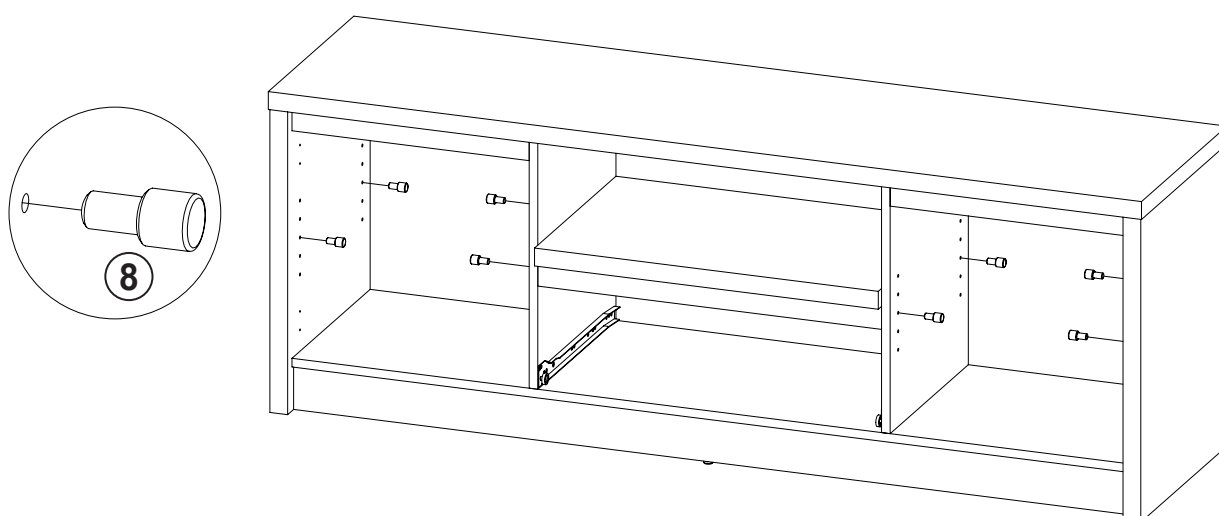
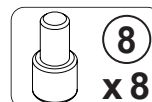
ITEM: **706222**

STEP 15

COASTER
FINE FURNITURE

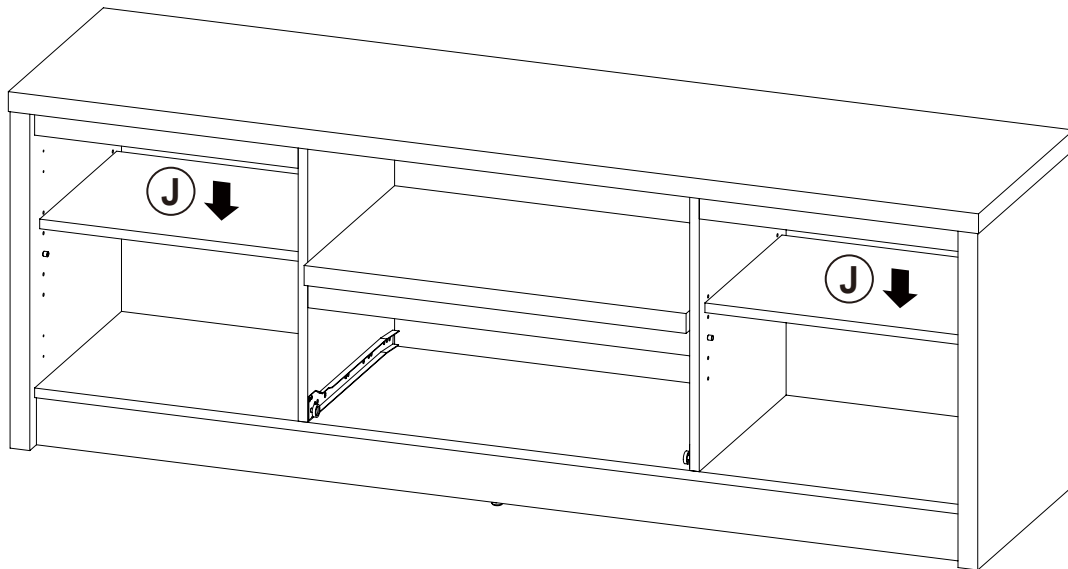


STEP 16

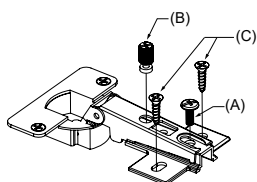


ITEM: **706222**

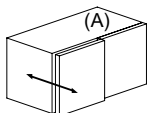
STEP 17



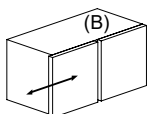
STEP 18



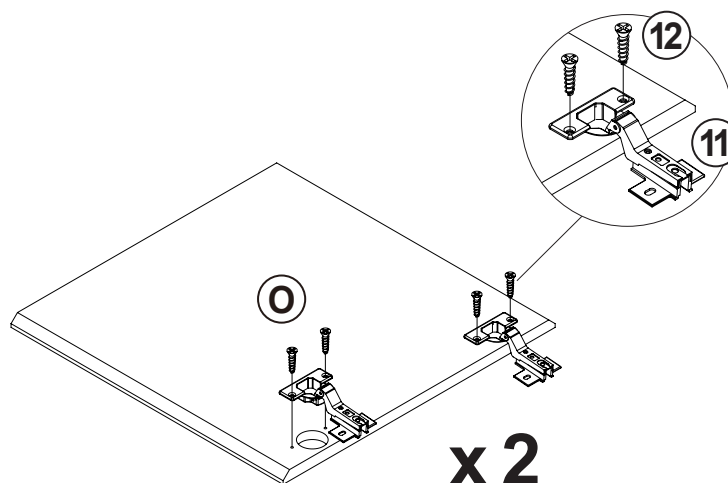
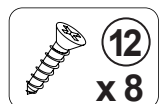
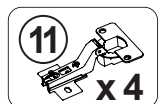
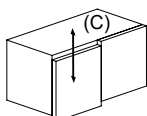
HORIZONTAL BY
SCREW A ADJUSTMENT



LATERAL BY
SCREW B ADJUSTMENT



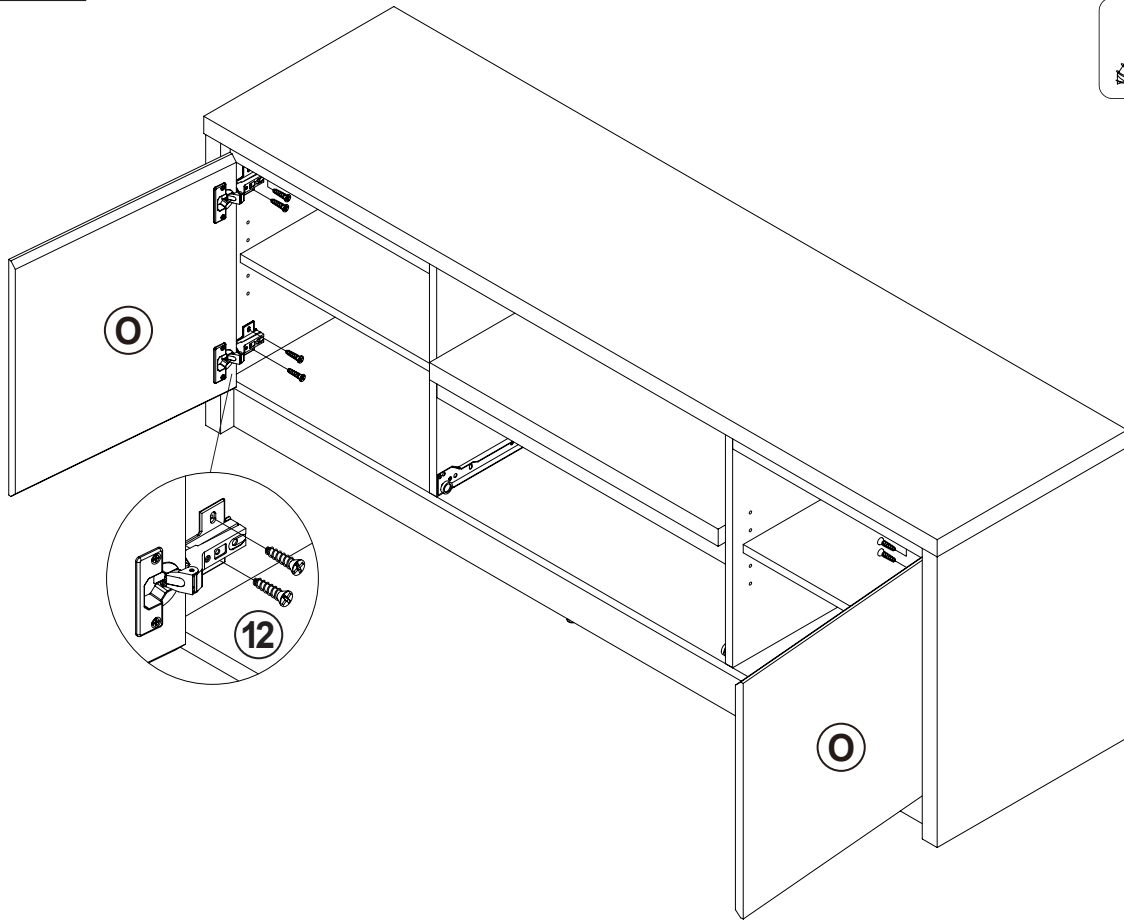
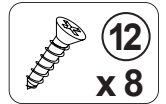
VERTICAL BY
SCREW C ADJUSTMENT



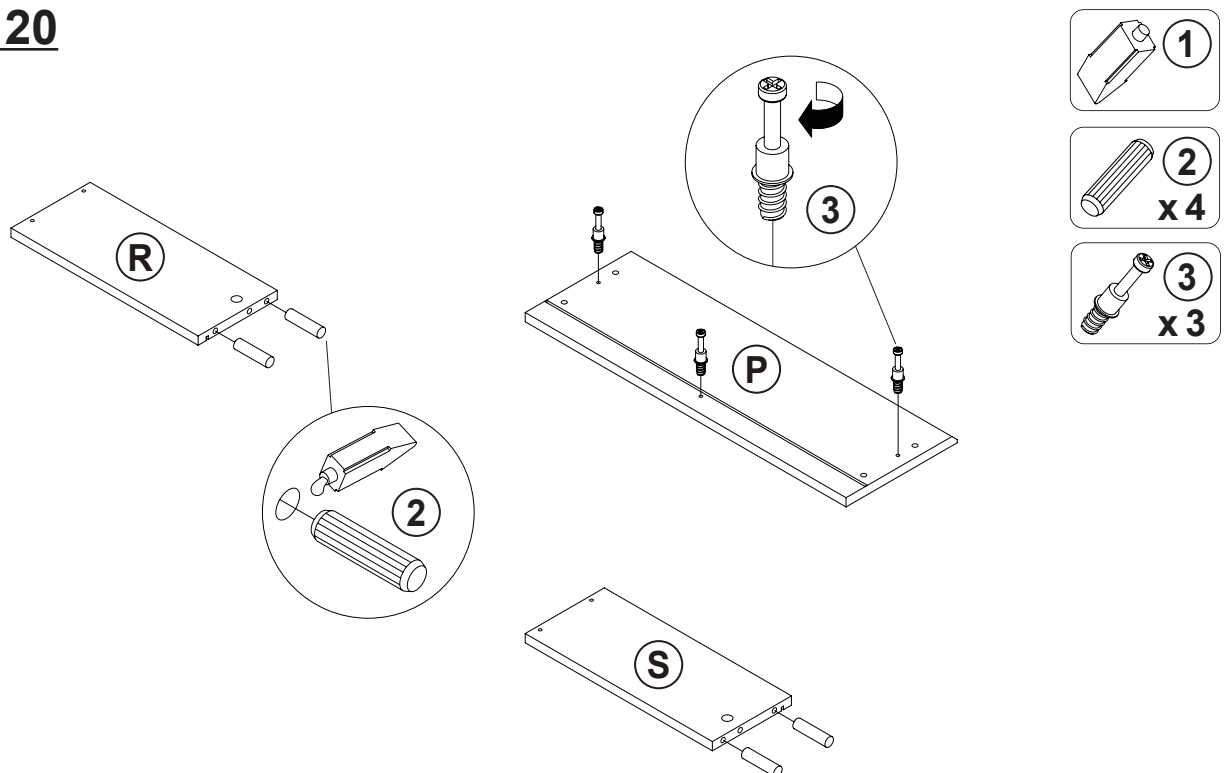
ITEM: **706222**

STEP 19

COASTER
FINE FURNITURE

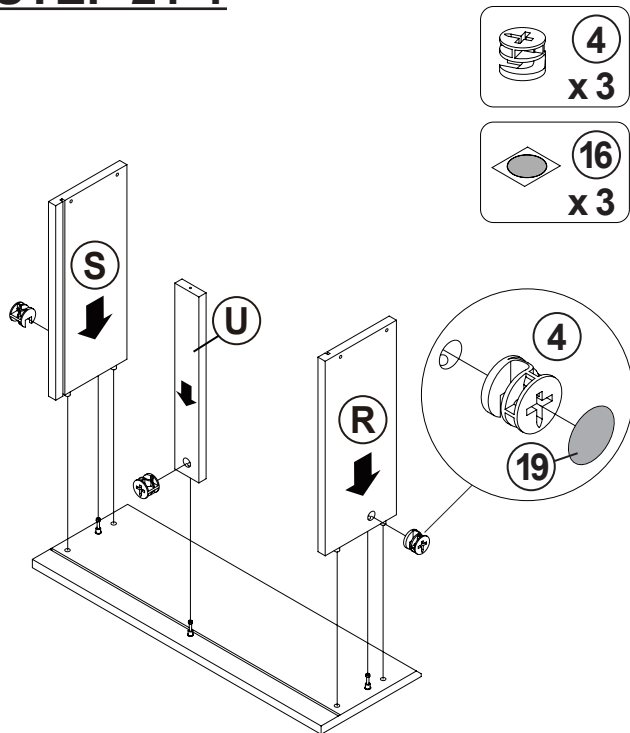


STEP 20

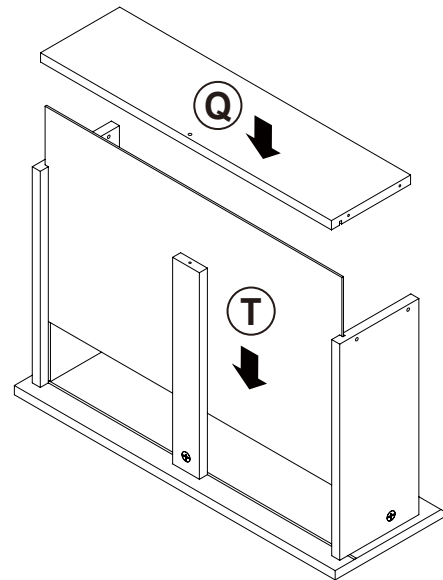


ITEM: **706222**

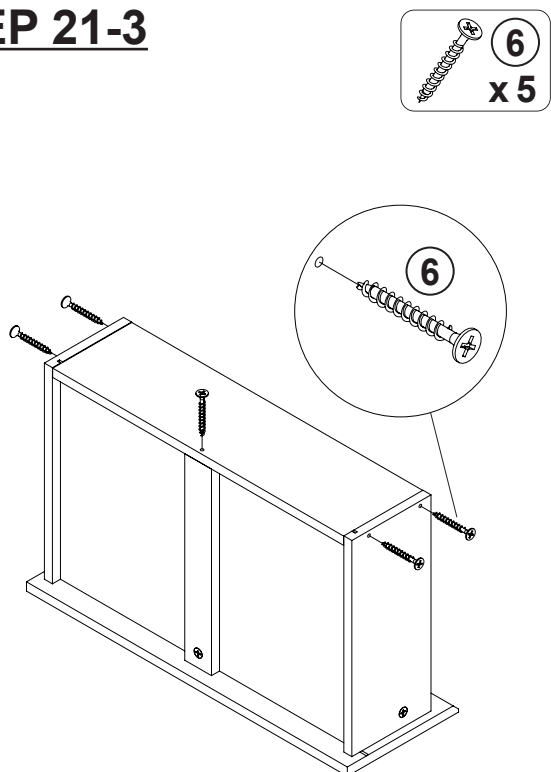
STEP 21-1



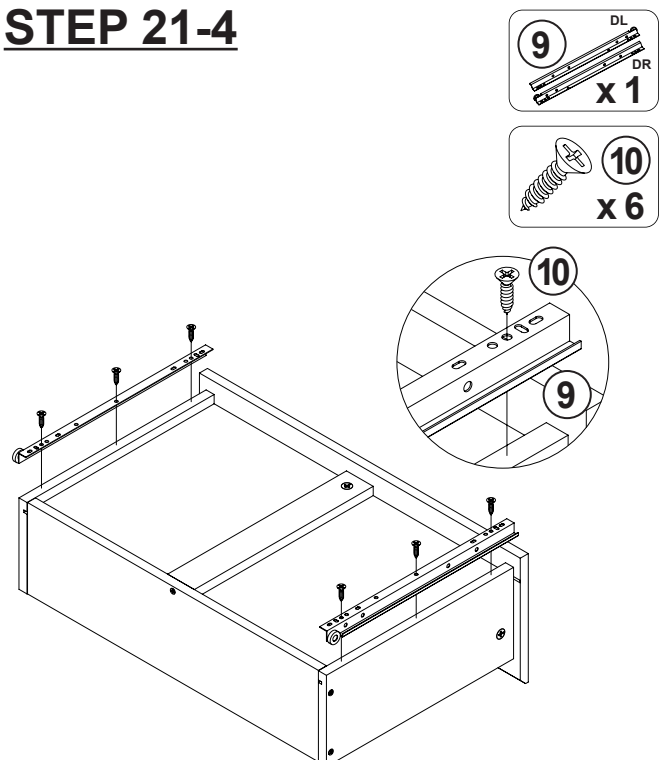
STEP 21-2



STEP 21-3



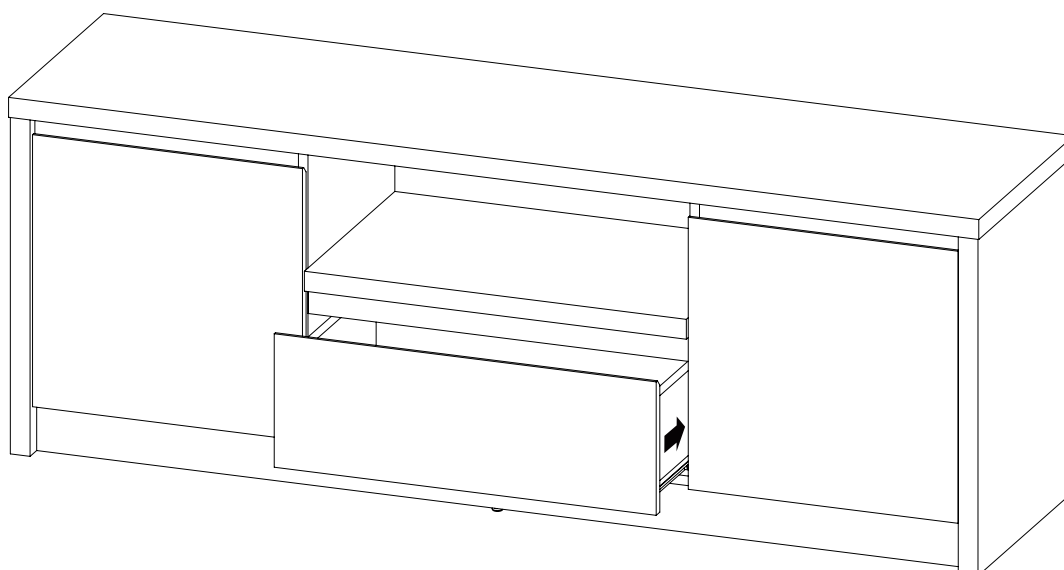
STEP 21-4



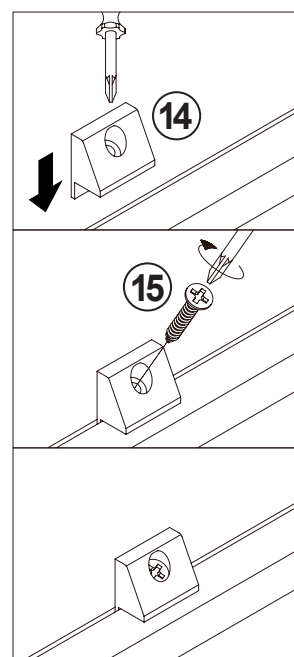
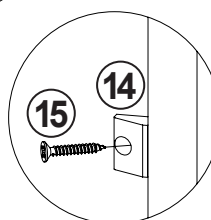
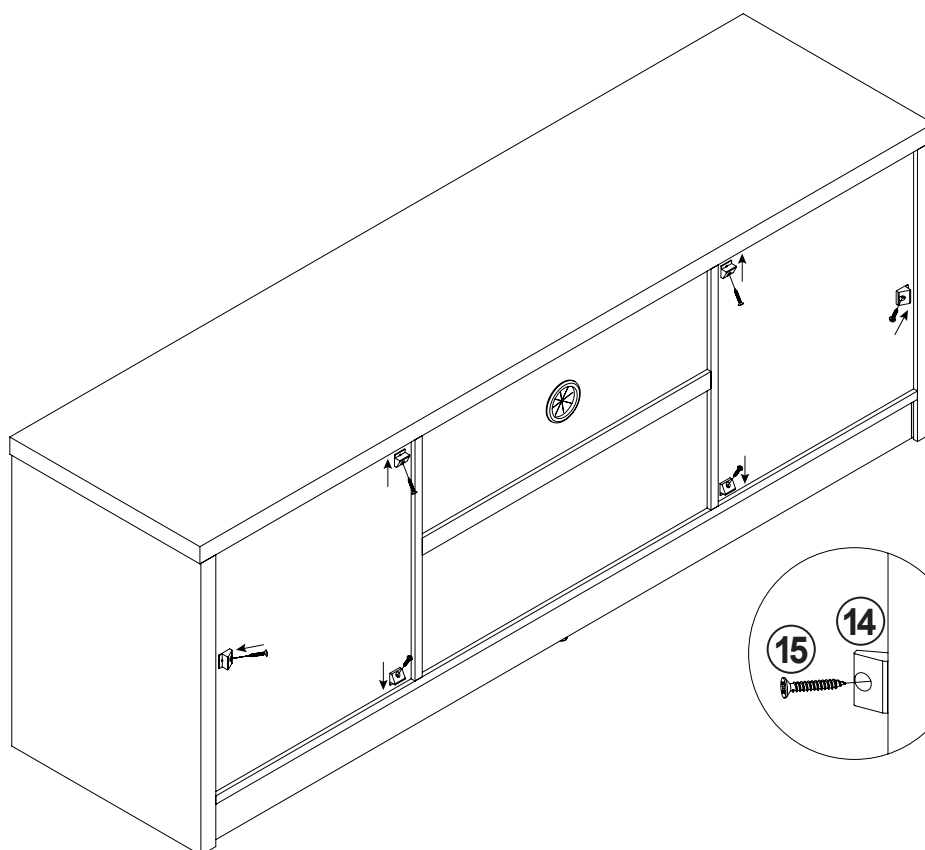
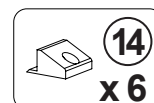
ITEM: **706222**

STEP 22

COASTER
FINE FURNITURE



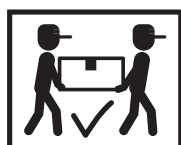
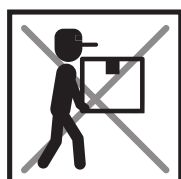
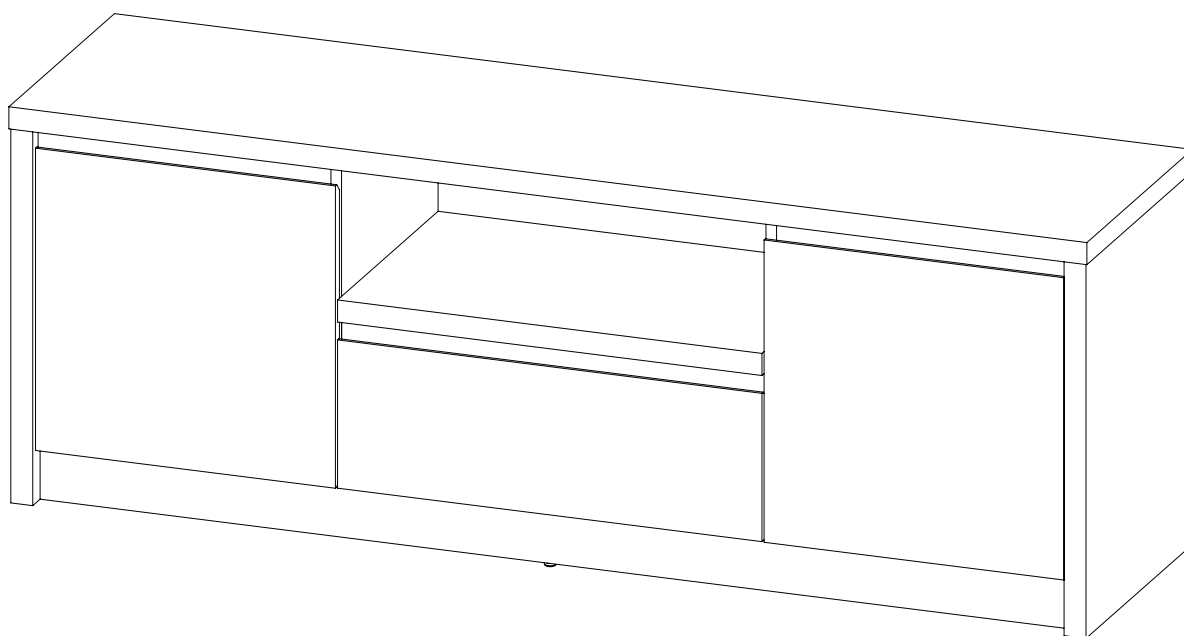
STEP 23



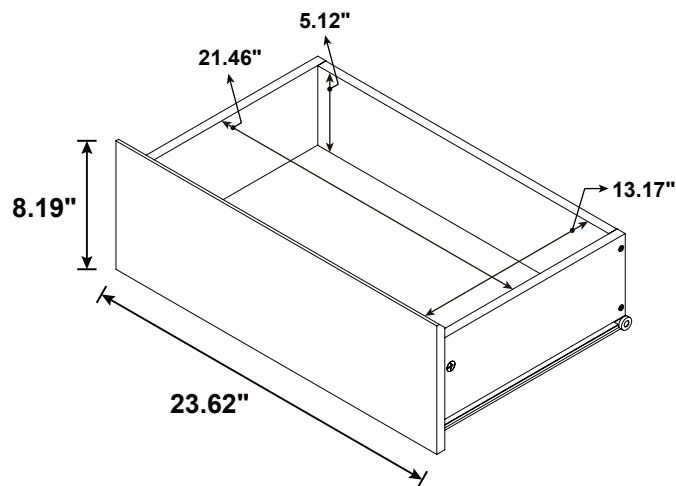
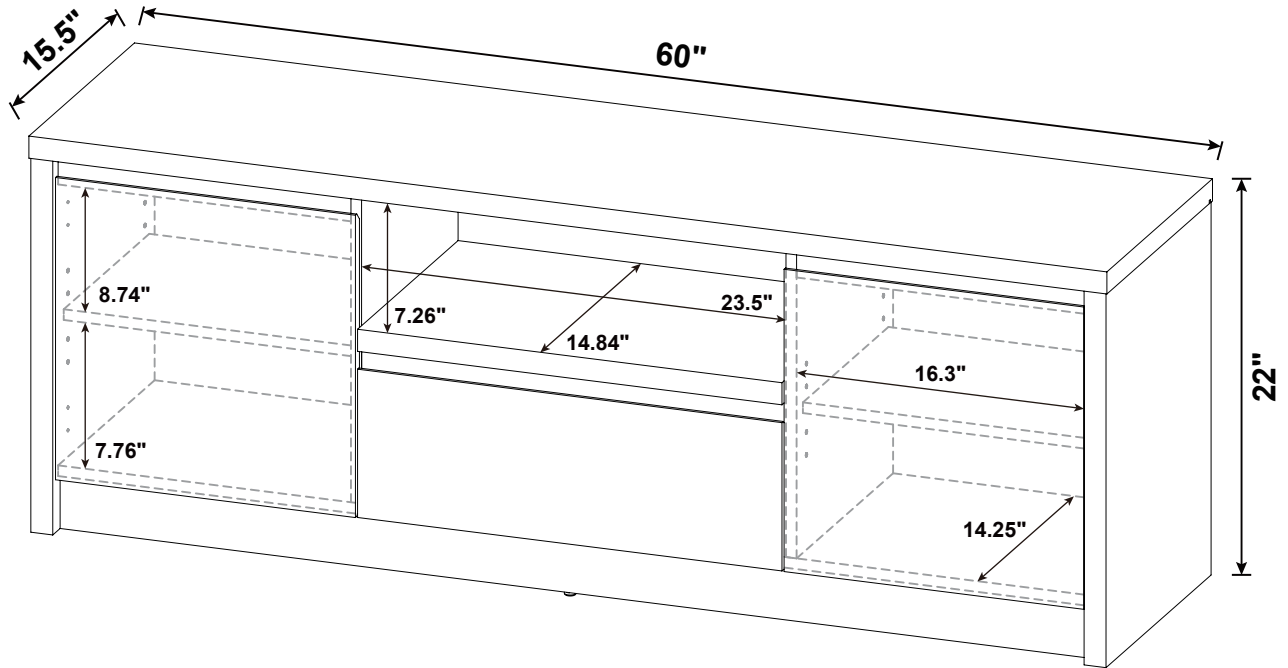
ITEM: **706222**

STEP 24

COMPLETE



ITEM: 706222



Note : Dimension tolerance $\pm 5\%$