

*ASSEMBLY INSTRUCTIONS
COASTER FINE FURNITURE*



Fine Furniture for every stage of life

706277
END TABLE

ITEM:706277

ASSEMBLY INSTRUCTIONS

ASSEMBLY TIPS:

1. Remove hardware from box and sort by size.
2. Please check to see that all hardware and parts are present prior to start of assembly.
3. Please follow attached instructions in the same sequence as numbered to assure fast & easy assembly.



WARNING!

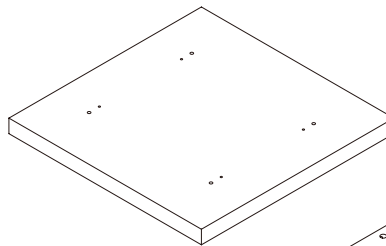
1. Don't attempt to repair or modify parts that are broken or defective. Please contact the store immediately.
2. This product is for home use only and not intended for commercial establishments.

ASSEMBLY TIME

25 MINUTES

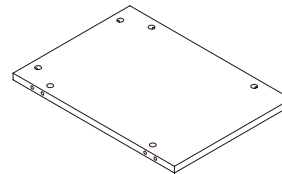
PARTS IDENTIFICATION

A TOP



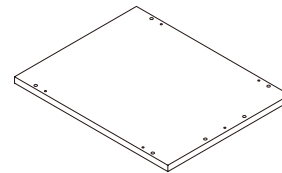
1 PC

B SIDE PANEL



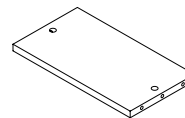
2 PCS

C FRONT AND BACK PANEL



2 PCS

D BOTTOM PANEL



1 PC

HARDWARE IDENTIFICATION

Z							
NO	DESCRIPTION	FIGURE	Q'TY	NO	DESCRIPTION	FIGURE	Q'TY
1	GLUE 15g		1 PC	4	CAM LOCK Ø15x12mm SR		14 PCS
2	WOODEN DOWEL Ø 8x30mm		16 PCS	5	PLASTIC FEET Ø15mm		4 PCS
3	CAM BOLT Ø7x35.5mm SR		14 PCS	6	STICKER Ø20mm		2 PCS

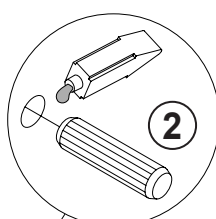
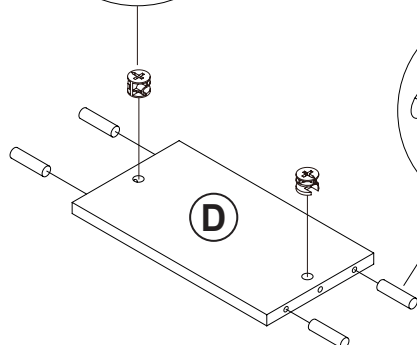
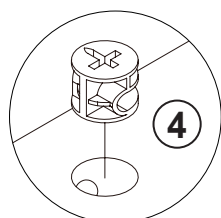
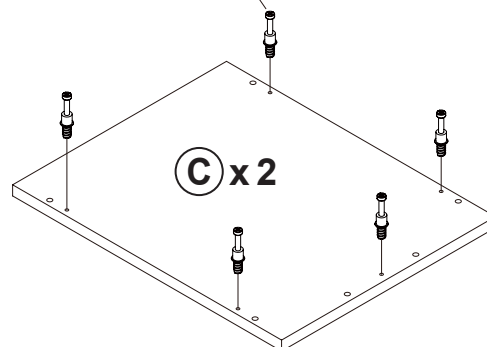
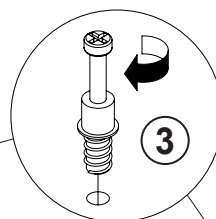
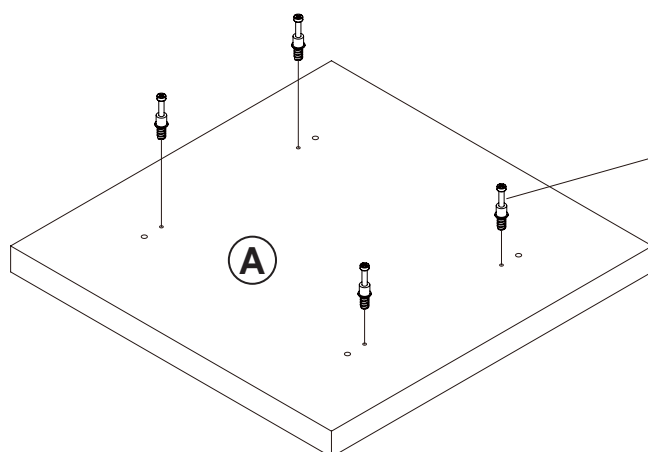
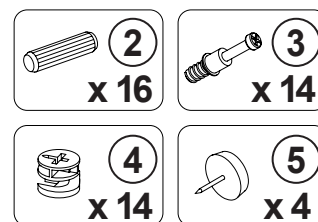
NOTE:

Phillips head screw driver is required in the assembly process; however, manufacturer does not provide this item.

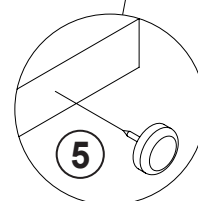
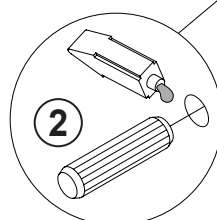
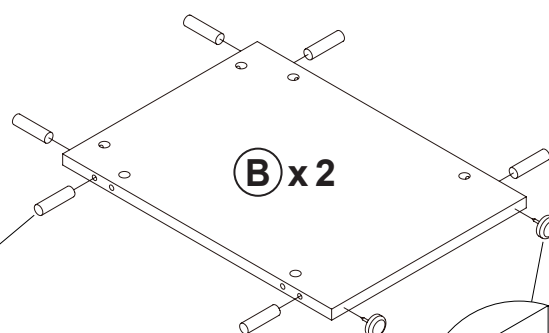
ITEM: 706277

STEP 1

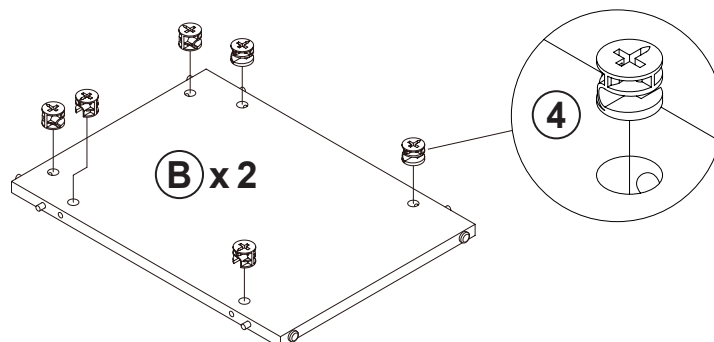
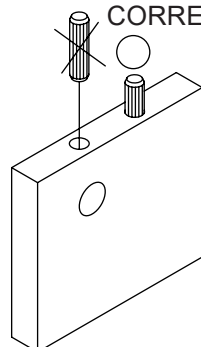
COASTER
FINE FURNITURE



Apply glue on all wooden dowels to ensure integrity of the structure.



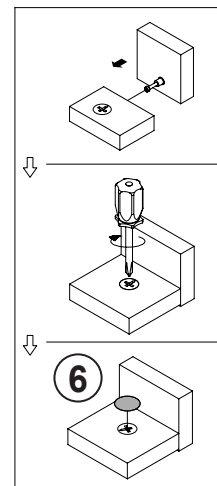
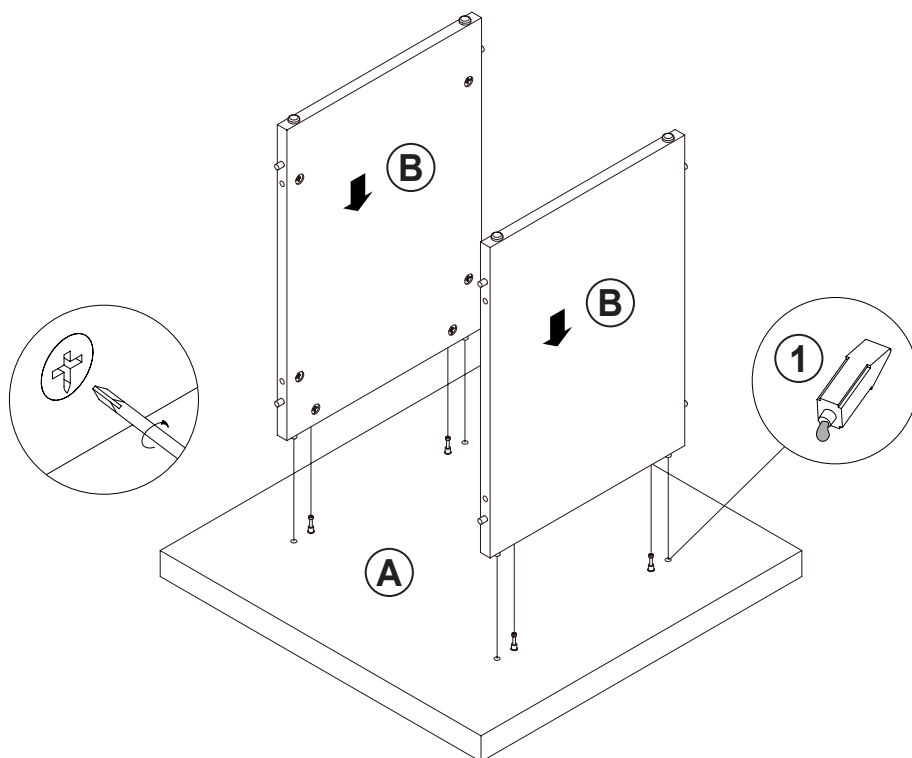
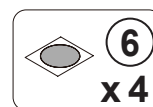
INCORRECT
CORRECT



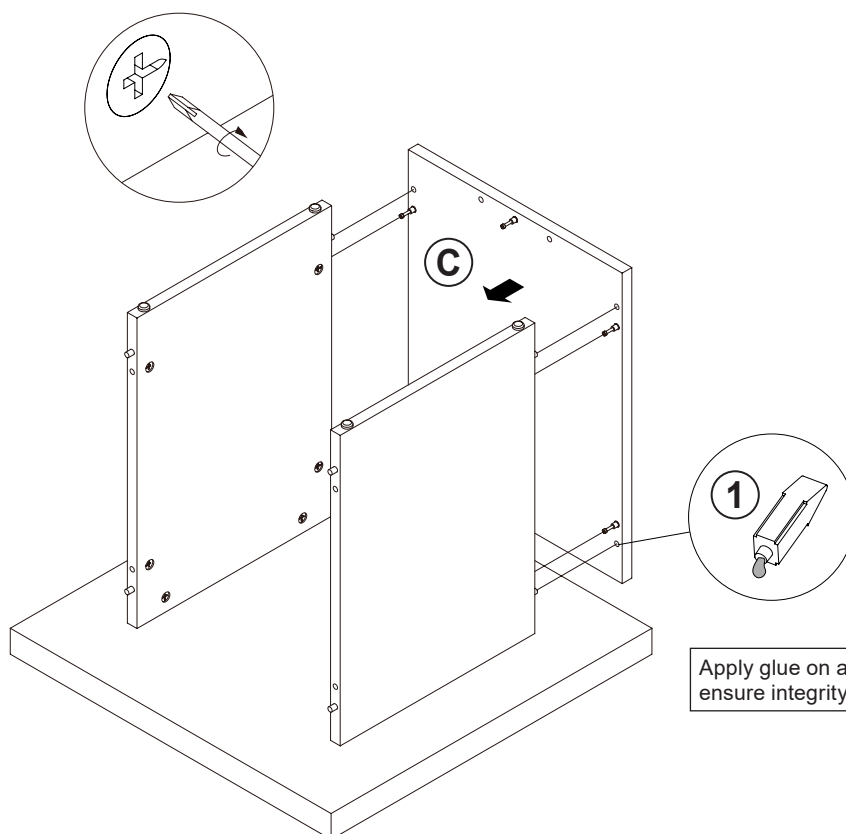
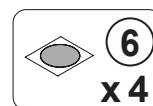
ITEM: **706277**

STEP 2

COASTER
FINE FURNITURE



STEP 3

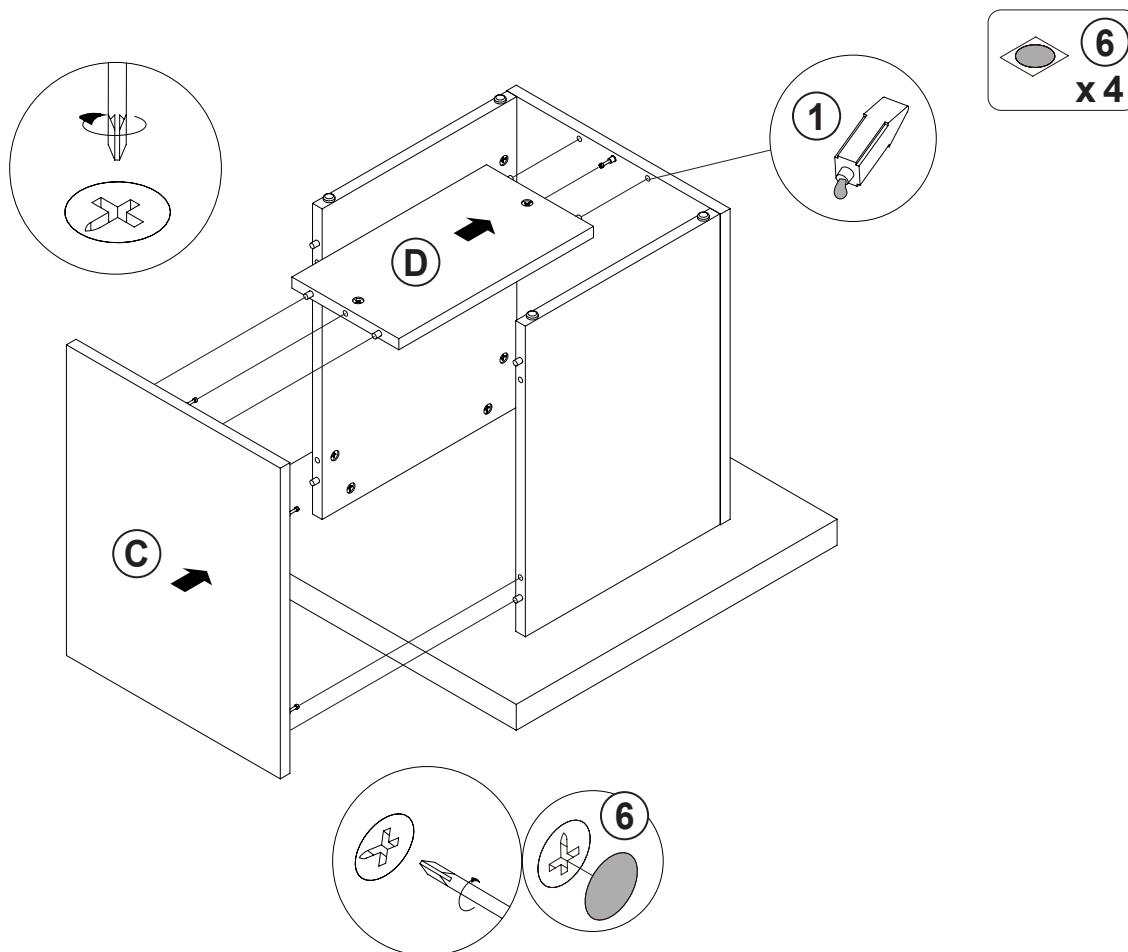


Apply glue on all wooden dowels to ensure integrity of the structure.

ITEM: **706277**

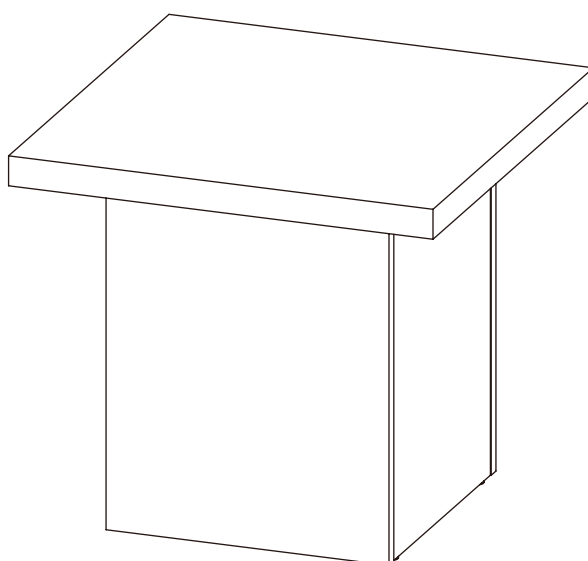
STEP 4

COASTER
FINE FURNITURE

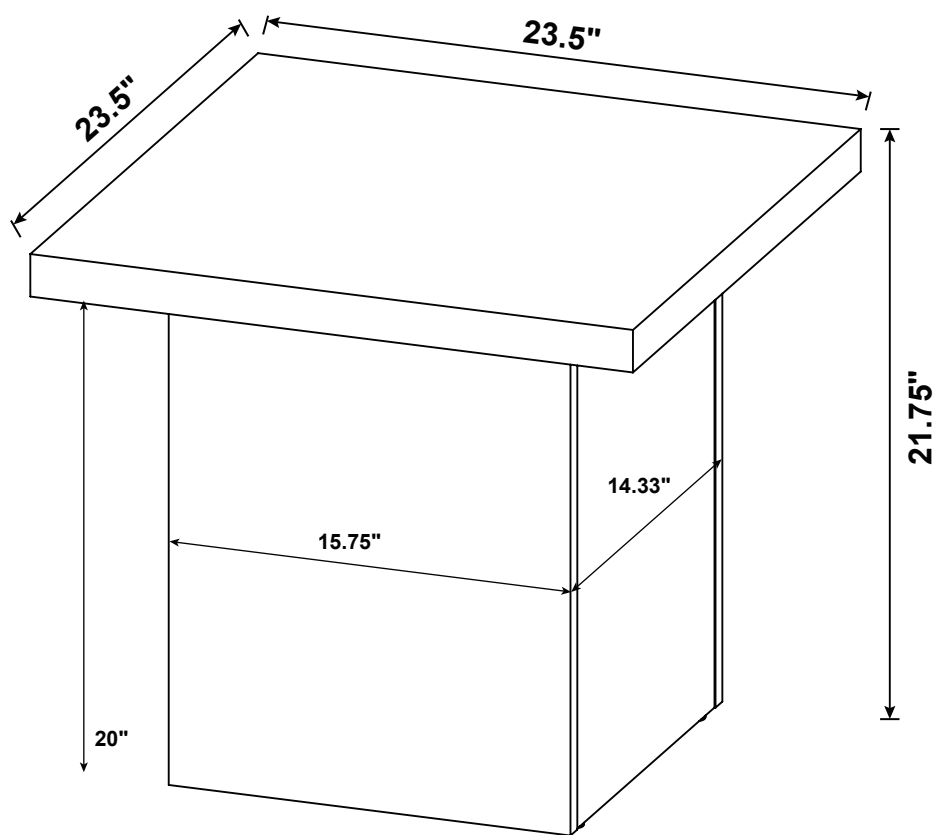


STEP 5

COMPLETE



ITEM: 706277



Note : Dimension tolerance $\pm 5\%$

*ASSEMBLY INSTRUCTIONS
COASTER FINE FURNITURE*



Fine Furniture for every stage of life

706278
COFFEE TABLE

ITEM:706278

ASSEMBLY INSTRUCTIONS

ASSEMBLY TIPS:

1. Remove hardware from box and sort by size.
2. Please check to see that all hardware and parts are present prior to start of assembly.
3. Please follow attached instructions in the same sequence as numbered to assure fast & easy assembly.



WARNING!

1. Don't attempt to repair or modify parts that are broken or defective. Please contact the store immediately.
2. This product is for home use only and not intended for commercial establishments.

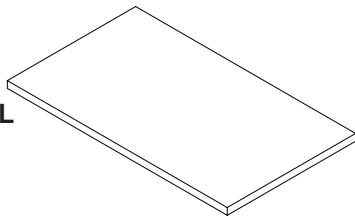


ASSEMBLY TIME

30 MINUTES

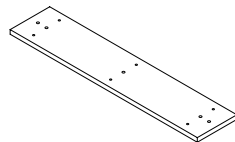
PARTS IDENTIFICATION

A TOP PANEL



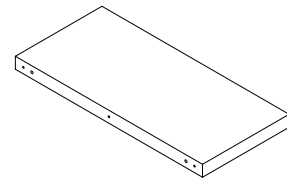
1 PC

B MOUNTING PANEL



2 PCS

C LEG PANEL



2 PCS

HARDWARE IDENTIFICATION

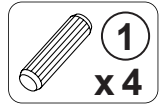
Z							
NO	DESCRIPTION	FIGURE	Q'TY	NO	DESCRIPTION	FIGURE	Q'TY
1	WOODEN DOWEL Ø8x30mm		4 PCS	4	ALLEN WRENCH (4mm SR)		1 PC
2	LONG SCREW Ø 4.5x42mm SR		12 PCS	5	FLOOR PROTECTOR		4 PCS
3	BOLT Ø7x60mm BLK		6 PCS				

NOTE:

Phillips head screw driver is required in the assembly process; however, manufacturer does not provide this item.

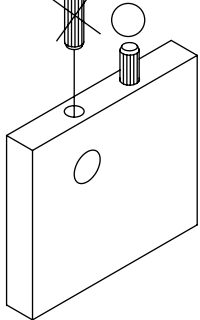
ITEM: **706278**

STEP 1

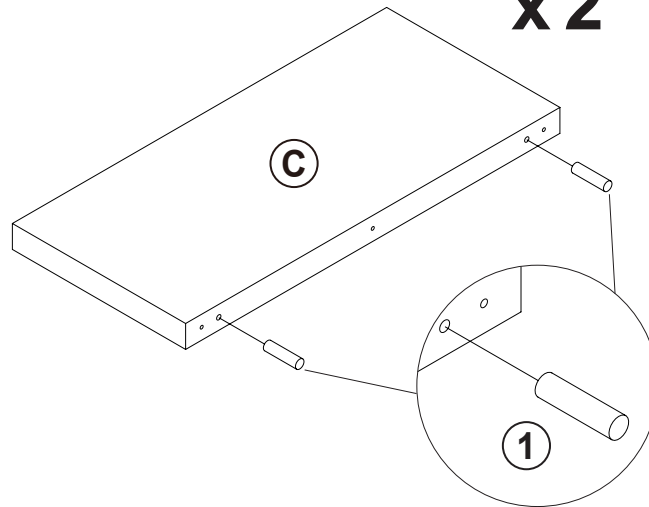


x 2

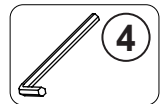
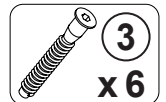
INCORRECT
CORRECT



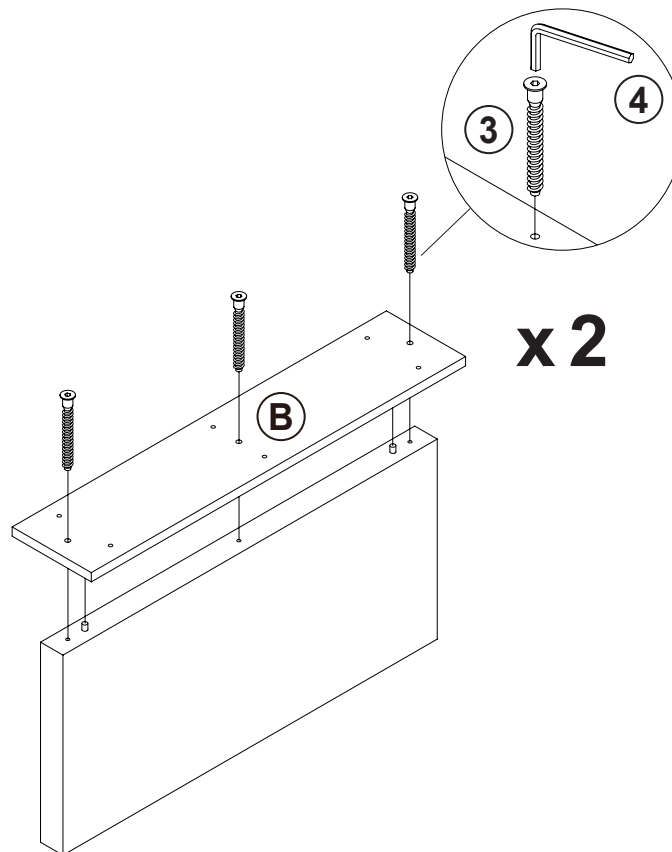
Apply glue on all wooden dowels to ensure integrity of the structure.



STEP 2



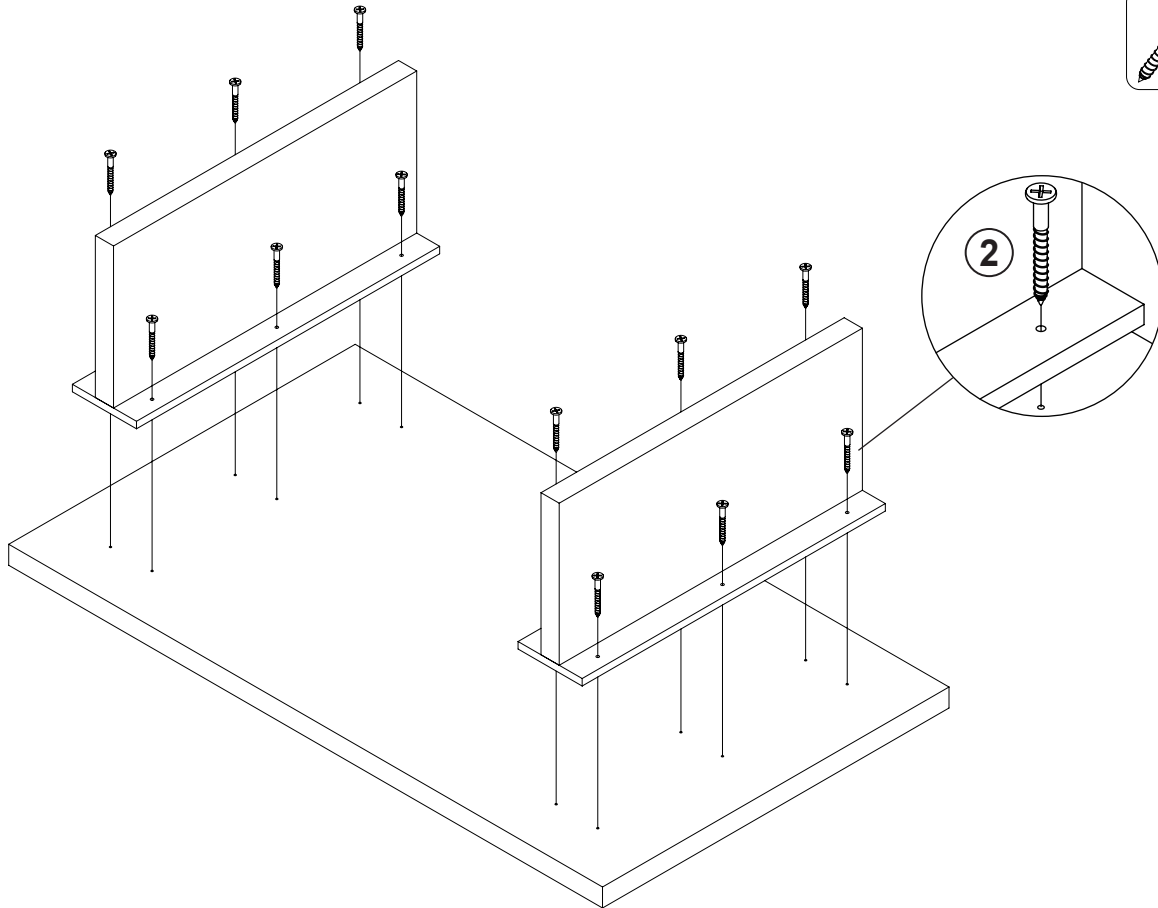
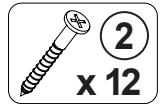
x 2



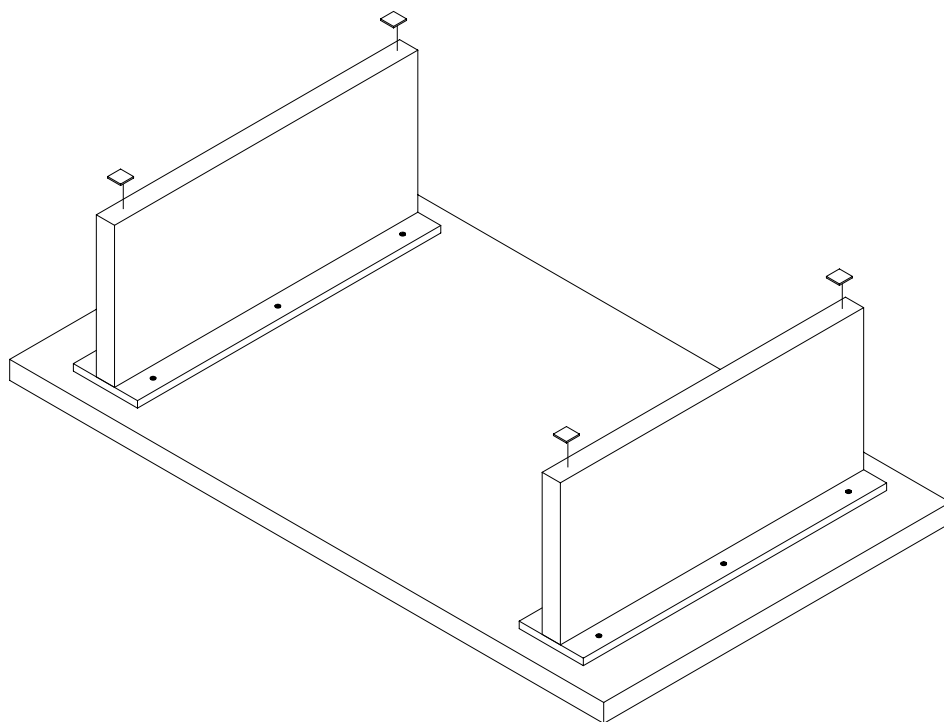
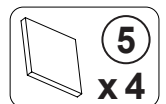
ITEM: **706278**

COASTER
FINE FURNITURE

STEP 3



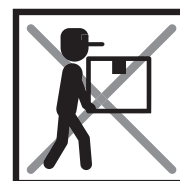
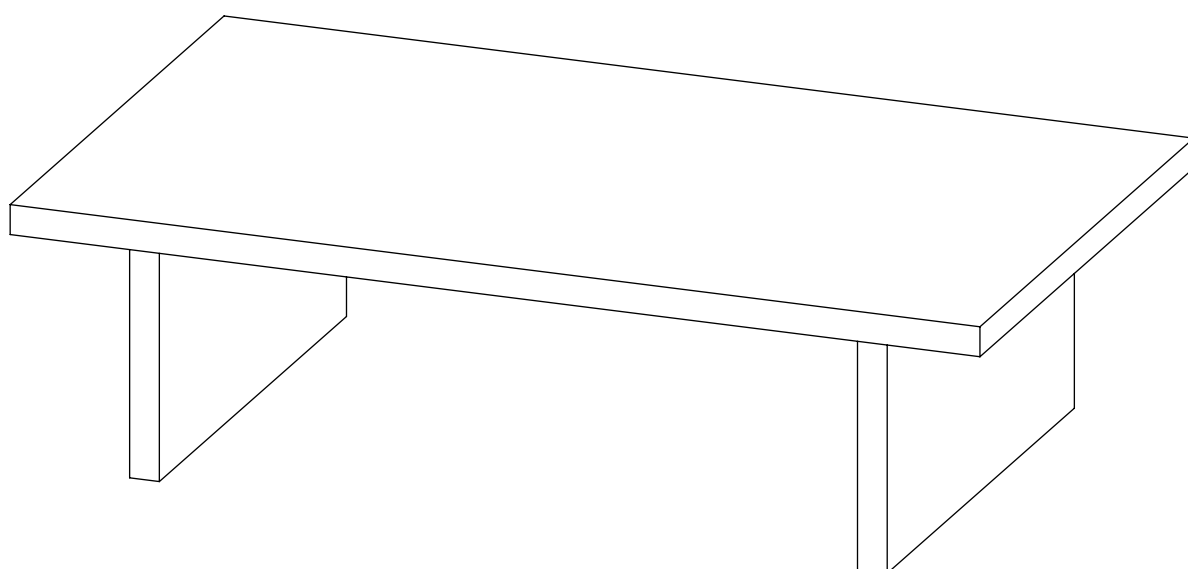
STEP 4



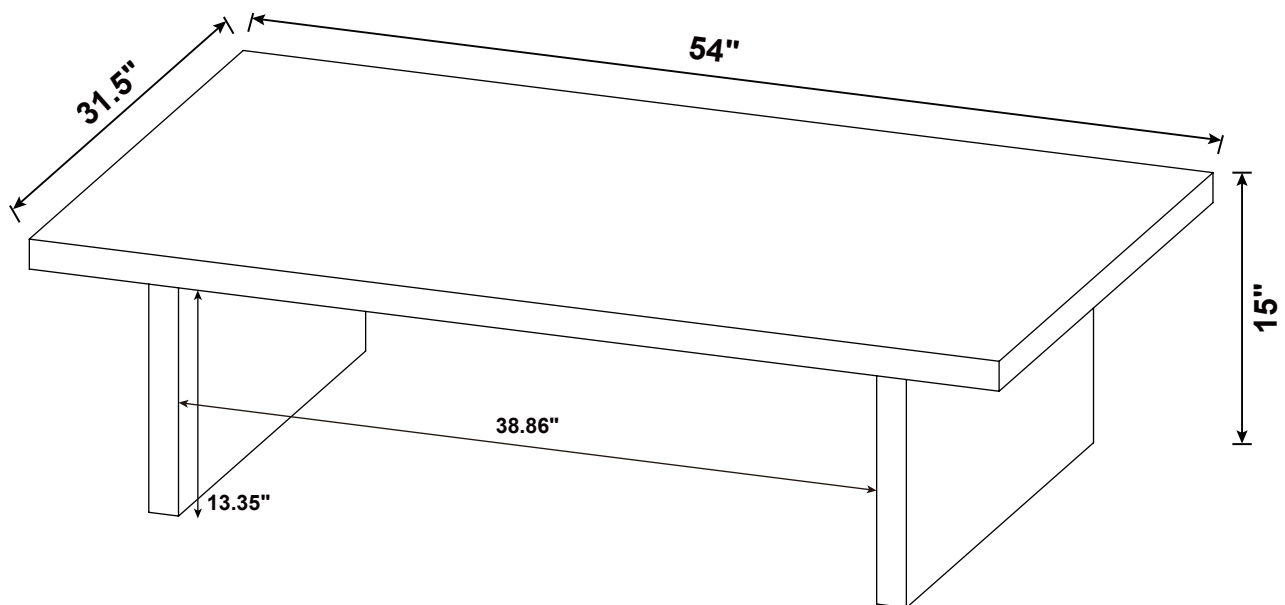
ITEM: **706278**

STEP 5

COMPLETE



ITEM: 706278



Note : Dimension tolerance $\pm 5\%$