

ASSEMBLY INSTRUCTIONS
COASTER FINE FURNITURE



Fine Furniture for every stage of life

708067
END TABLE

ITEM:708067

ASSEMBLY INSTRUCTIONS

ASSEMBLY TIPS:

1. Remove hardware from box and sort by size.
2. Please check to see that all hardware and parts are present prior to start of assembly.
3. Please follow attached instructions in the same sequence as numbered to assure fast & easy assembly.



WARNING!

1. Don't attempt to repair or modify parts that are broken or defective. Please contact the store immediately.
2. This product is for home use only and not intended for commercial establishments.

ASSEMBLY TIME

30 MINUTES

PARTS IDENTIFICATION

| | | | |
|---|---------------|--|-------|
| A | TOP | | 1 PC |
| B | SIDE PANEL | | 2 PCS |
| C | DIVIDER PANEL | | 2 PCS |
| D | BOTTOM PANEL | | 1 PC |

HARDWARE IDENTIFICATION

| Z | | | | | | | |
|----|--------------------------|--------|--------|----|-------------------------|--------|--------|
| NO | DESCRIPTION | FIGURE | Q'TY | NO | DESCRIPTION | FIGURE | Q'TY |
| 1 | GLUE 15g | | 1 PC | 4 | CAM LOCK Ø15x12mm SR | | 14 PCS |
| 2 | WOODEN DOWEL Ø 8x30mm | | 16 PCS | 5 | PLASTIC FEET Ø15mm | | 4 PCS |
| 3 | CAM BOLT Ø7x35.5mm SR | | 14 PCS | 6 | STICKER Ø20mm | | 2 PCS |

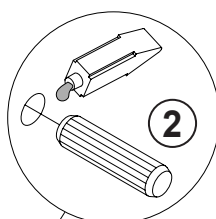
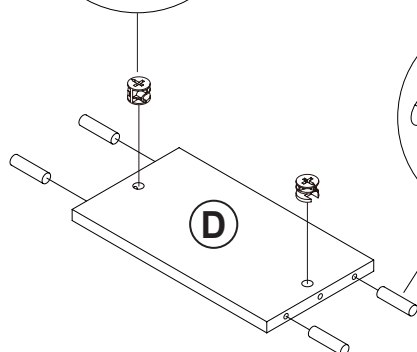
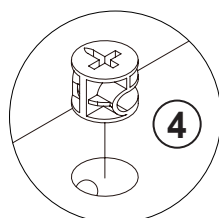
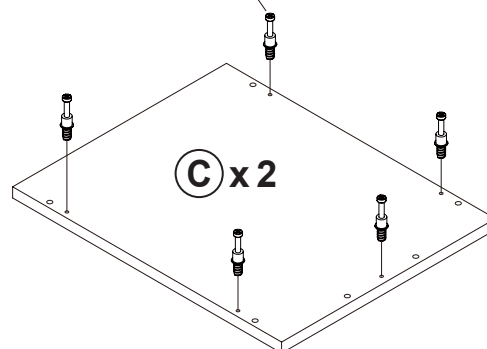
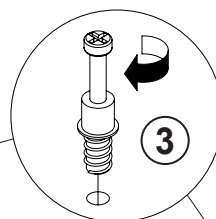
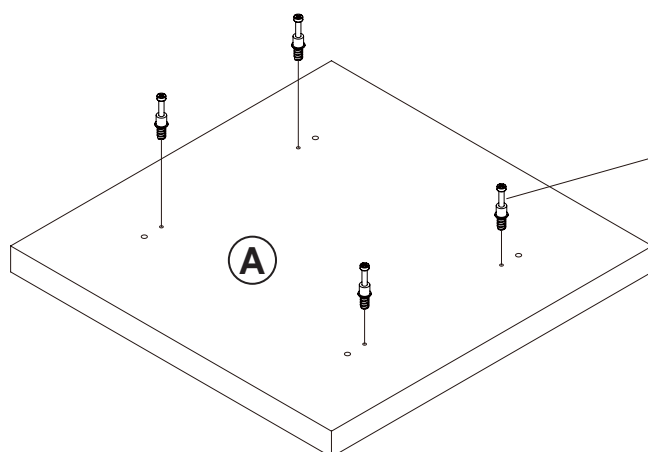
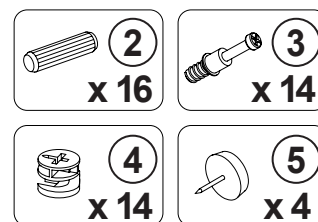
NOTE:

Phillips head screw driver is required in the assembly process; however, manufacturer does not provide this item.

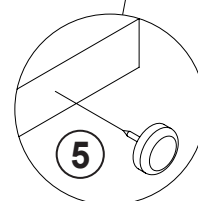
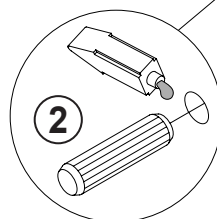
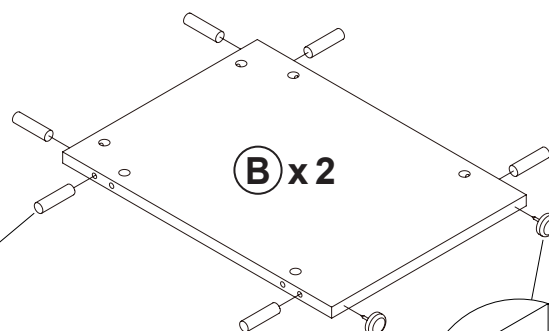
ITEM: 708067

STEP 1

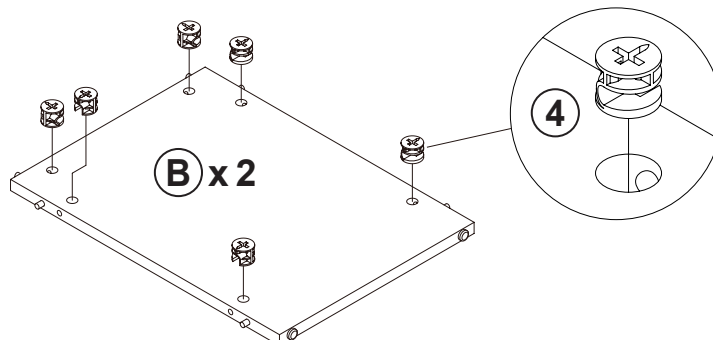
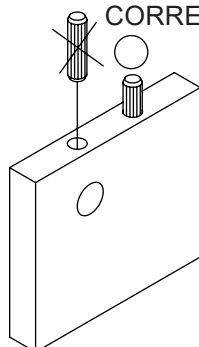
COASTER
FINE FURNITURE



Apply glue on all wooden dowels to ensure integrity of the structure.



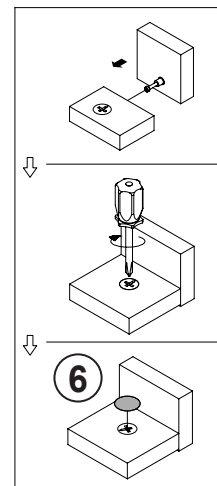
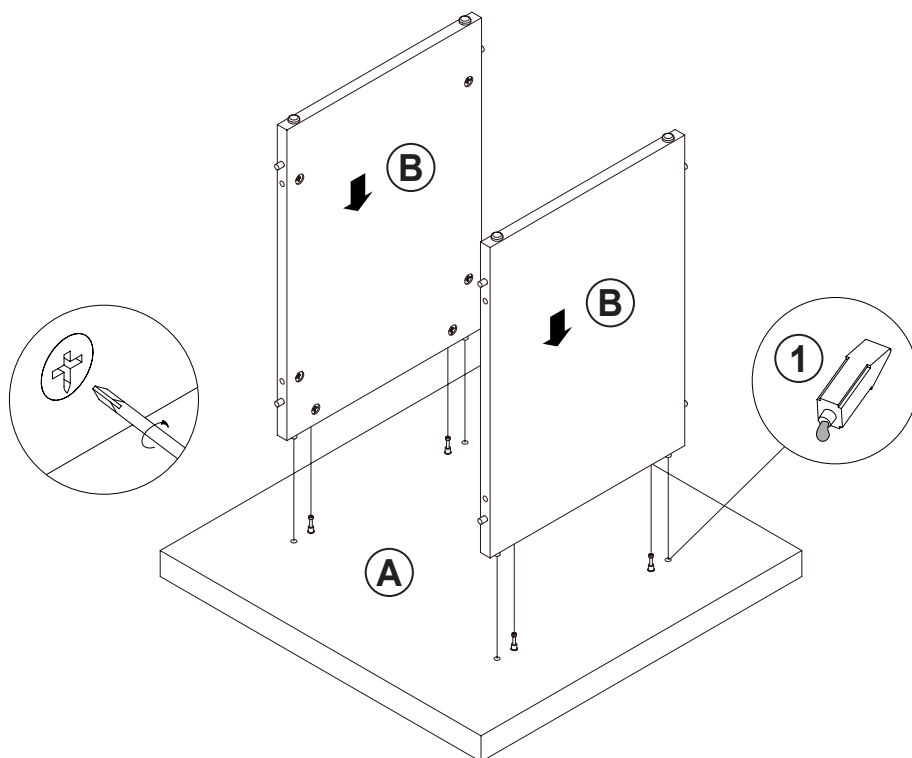
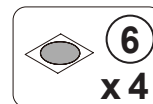
INCORRECT
CORRECT



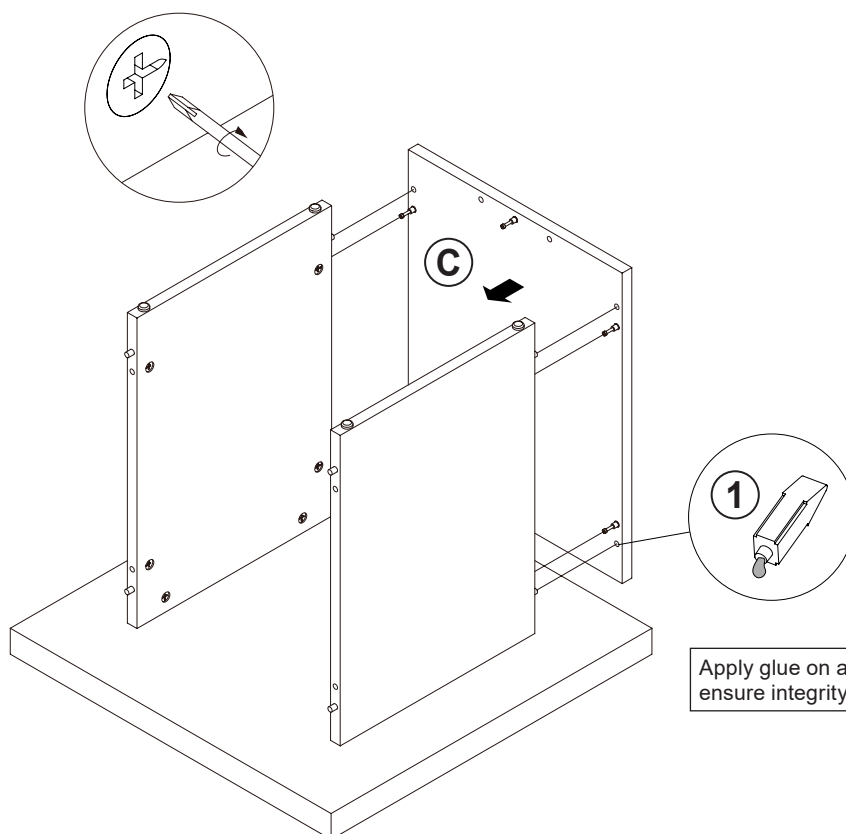
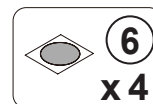
ITEM: **708067**

STEP 2

COASTER
FINE FURNITURE



STEP 3

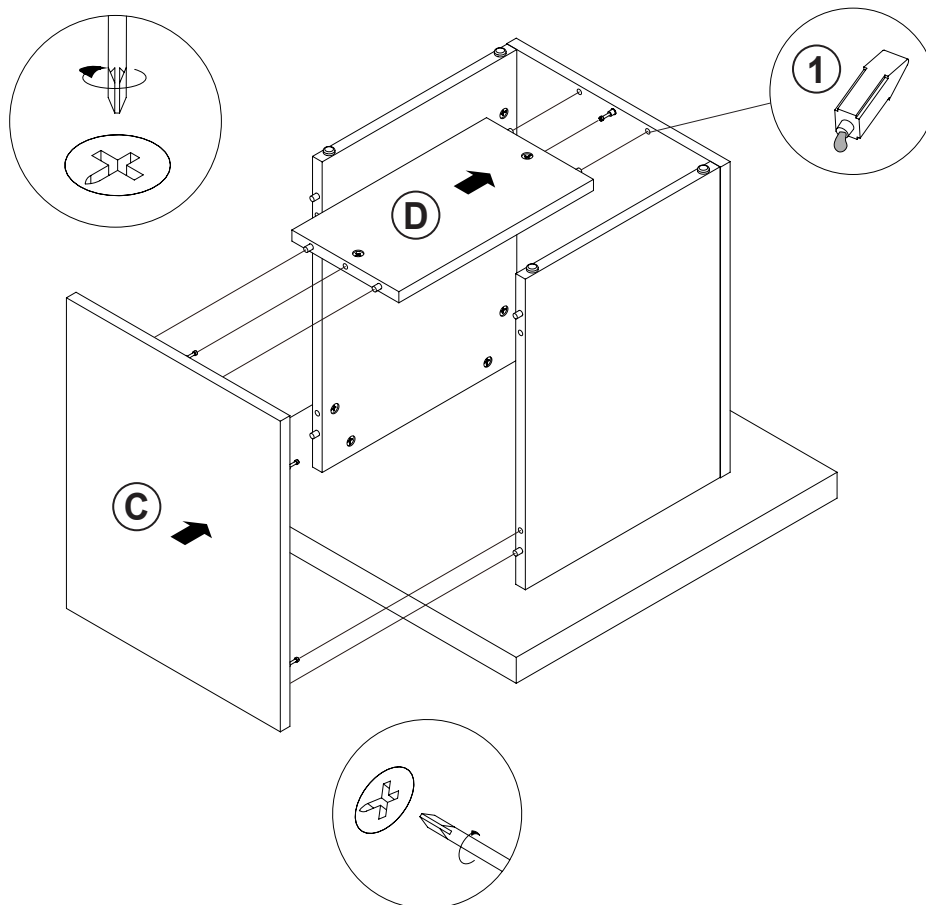
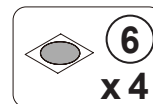


Apply glue on all wooden dowels to ensure integrity of the structure.

ITEM: **708067**

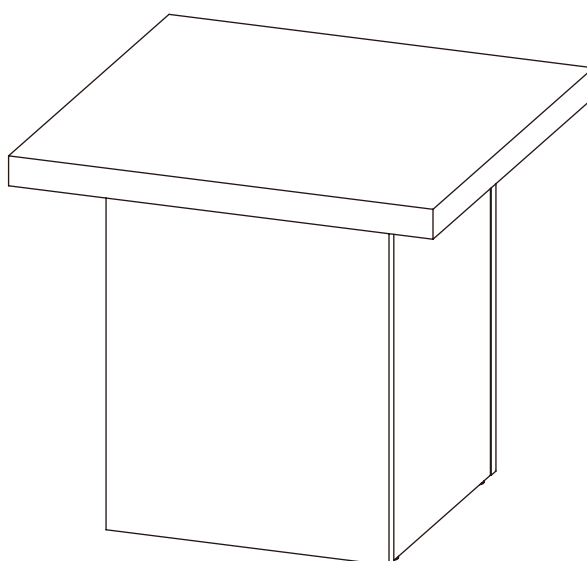
STEP 4

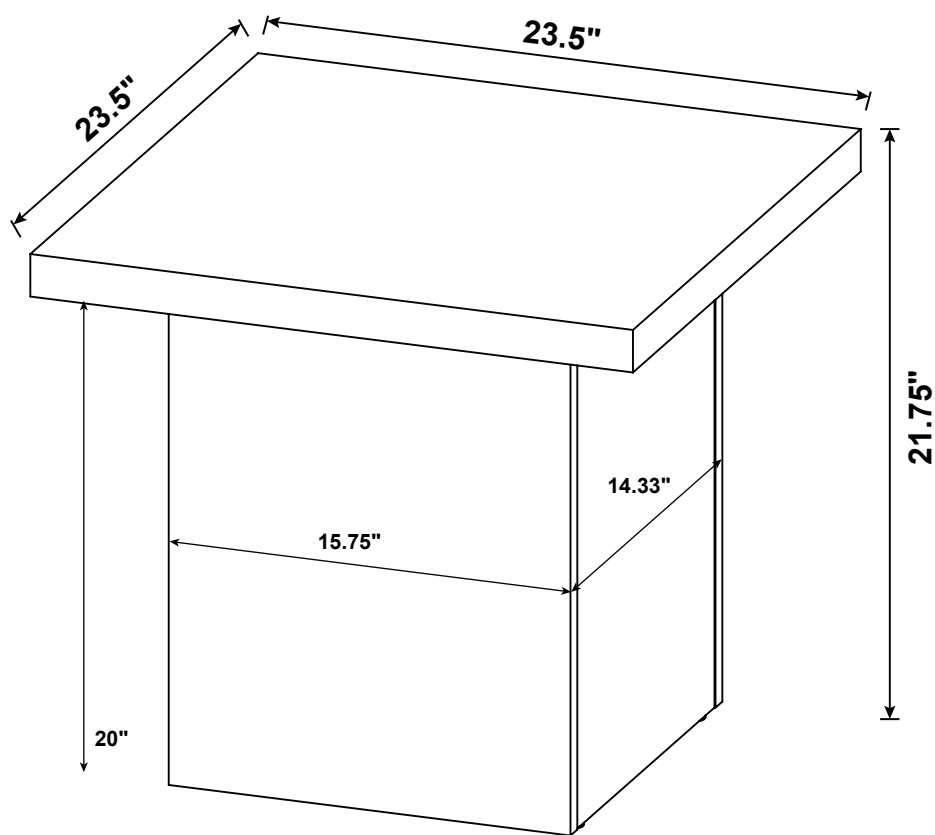
COASTER
FINE FURNITURE



STEP 5

COMPLETE





Note : Dimension tolerance $\pm 5\%$

*ASSEMBLY INSTRUCTIONS
COASTER FINE FURNITURE*



Fine Furniture for every stage of life

708068
COFFEE TABLE

ITEM:708068

ASSEMBLY INSTRUCTIONS

ASSEMBLY TIPS:

1. Remove hardware from box and sort by size.
2. Please check to see that all hardware and parts are present prior to start of assembly.
3. Please follow attached instructions in the same sequence as numbered to assure fast & easy assembly.



WARNING!

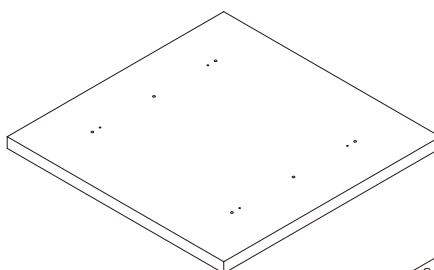
1. Don't attempt to repair or modify parts that are broken or defective. Please contact the store immediately.
2. This product is for home use only and not intended for commercial establishments.

ASSEMBLY TIME

30 MINUTES

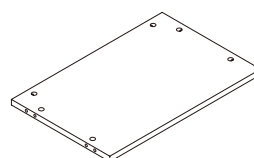
PARTS IDENTIFICATION

A TOP



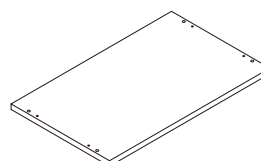
1 PC

B SIDE PANEL



2 PCS

C DIVIDER PANEL



2 PCS

HARDWARE IDENTIFICATION

Z

| NO | DESCRIPTION | FIGURE | Q'TY | NO | DESCRIPTION | FIGURE | Q'TY |
|----|--------------------------|--------|--------|----|-------------------------|--------|--------|
| 1 | GLUE 15g | | 1 PC | 4 | CAM LOCK Ø15x12mm SR | | 12 PCS |
| 2 | WOODEN DOWEL Ø 8x30mm | | 14 PCS | 5 | PLASTIC FEET Ø15mm | | 4 PCS |
| 3 | CAM BOLT Ø7x35.5mm SR | | 12 PCS | 6 | STICKER Ø20mm | | 2 PCS |

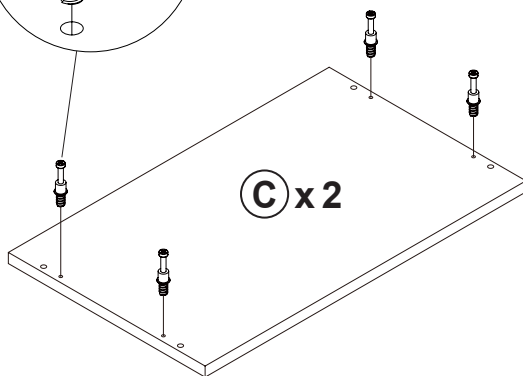
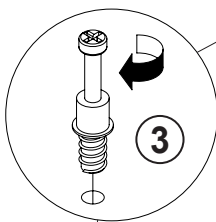
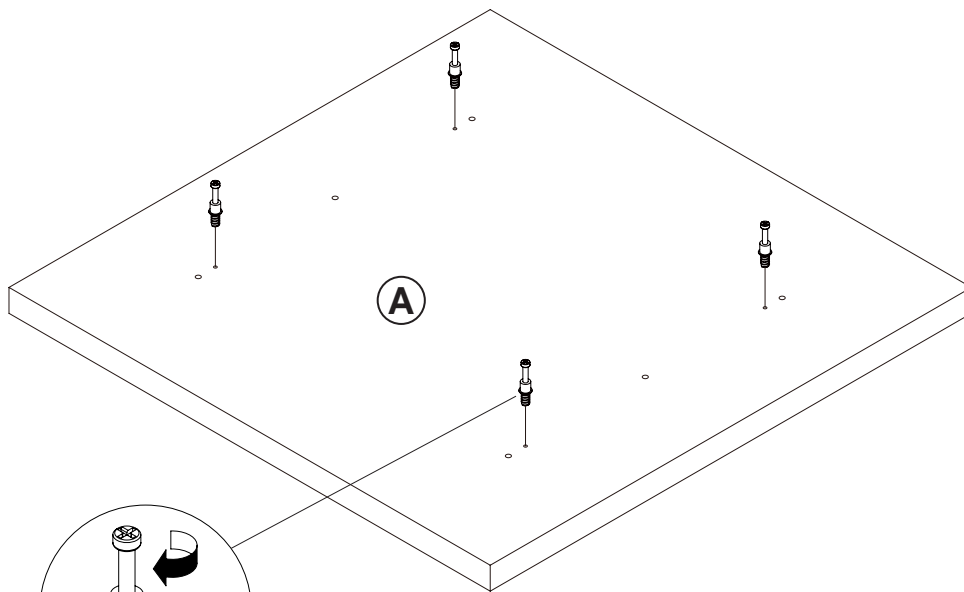
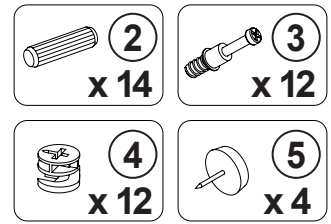
NOTE:

Phillips head screw driver is required in the assembly process; however, manufacturer does not provide this item.

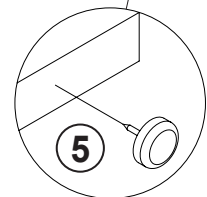
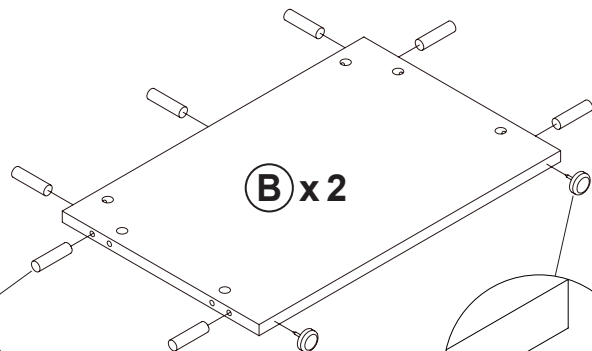
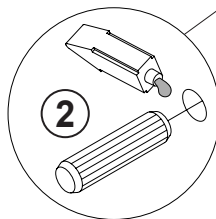
ITEM: **708068**

STEP 1

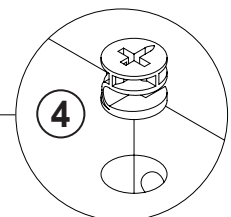
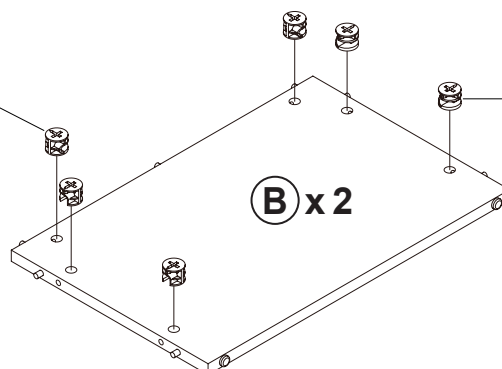
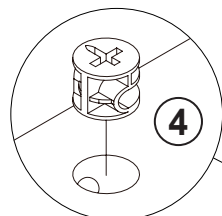
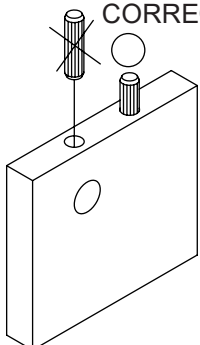
COASTER
FINE FURNITURE



Apply glue on all wooden dowels to ensure integrity of the structure.

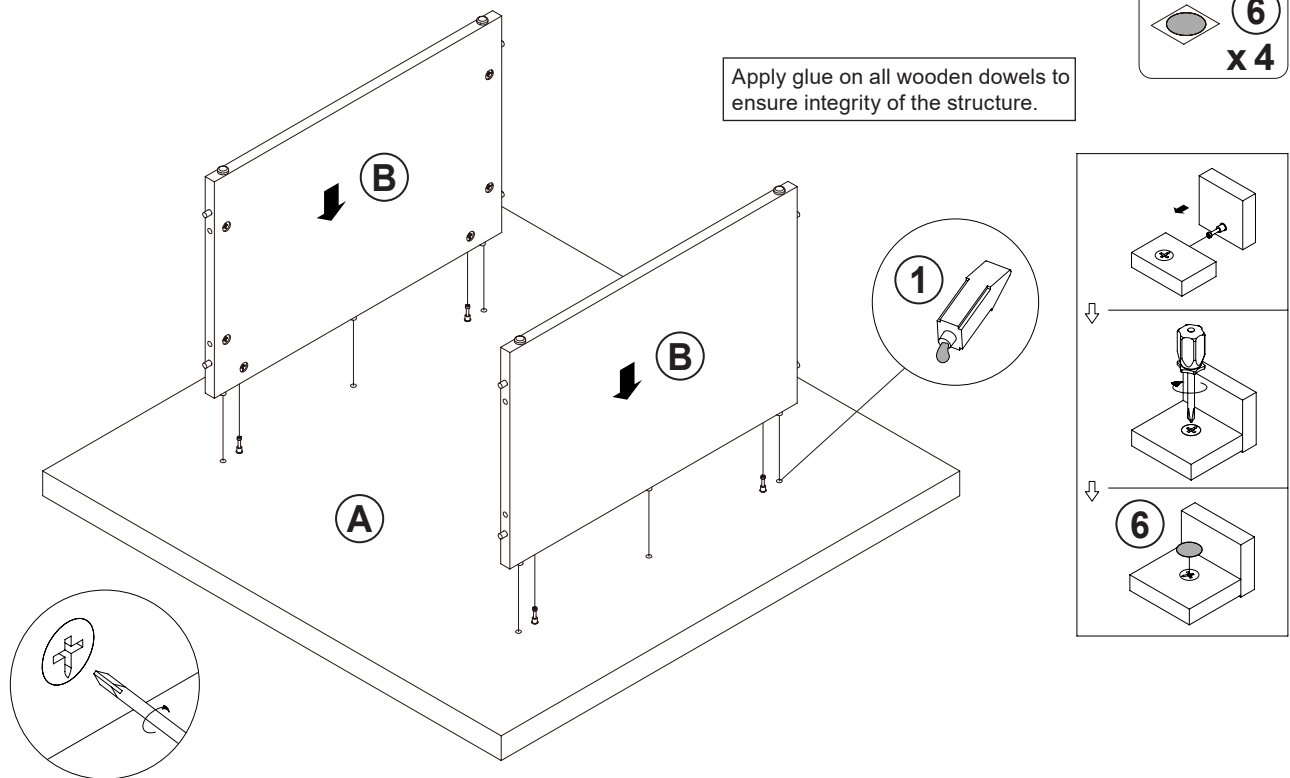


INCORRECT
CORRECT

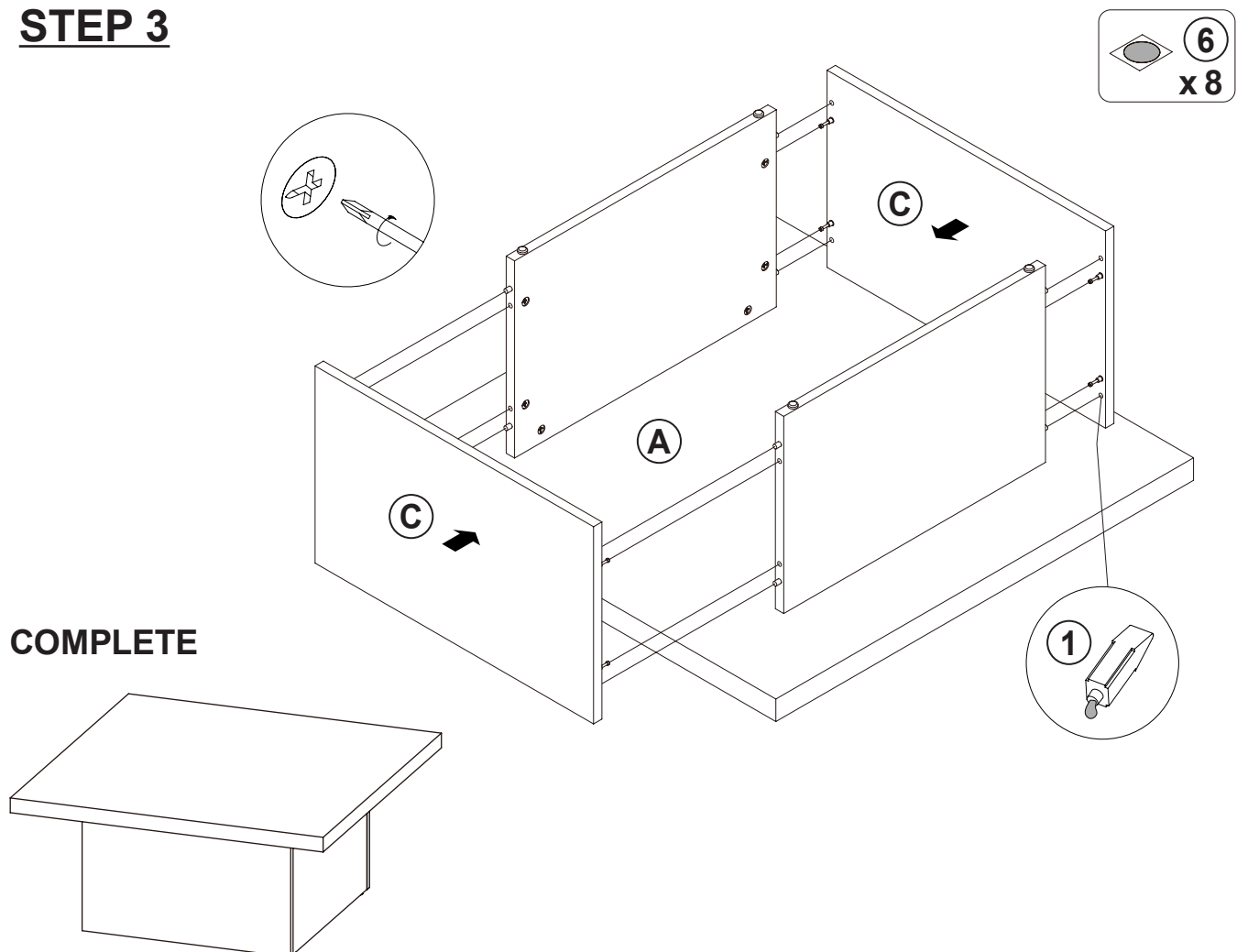


ITEM: **708068**

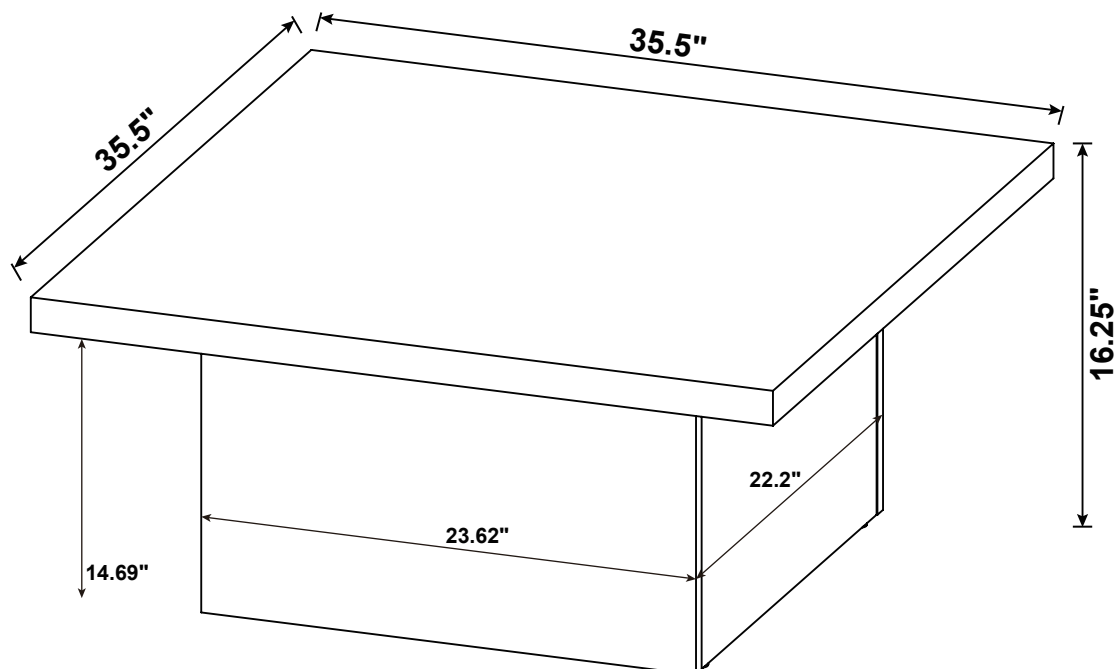
STEP 2



STEP 3



ITEM: 708068



Note : Dimension tolerance $\pm 5\%$