



ASSEMBLY INSTRUCTIONS COASTER FINE FURNITURE



903095 ACCENT CHAIR

REVISION 0:05/28/2024
REVISION 1:12/11/2024
REVISION 2:02/21/2025
REVISION 3:02/27/2025

PAGE 1 OF 5

COASTERFURNITURE.COM

ITEM:903095



ASSEMBLY INSTRUCTIONS

ASSEMBLY TIPS:

1. Remove hardware from box and sort by size.
2. Please check to see that all hardware and parts are present prior to start of assembly.
3. Please follow attached instructions in the same sequence as numbered to assure fast & easy assembly.



WARNING!

1. Don't attempt to repair or modify parts that are broken or defective. Please contact the store immediately.
2. This product is for home use only and not intended for commercial establishments.

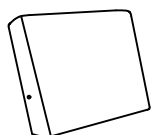


ASSEMBLY TIME

5 MINUTES

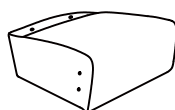
PARTS IDENTIFICATION:

A BACK



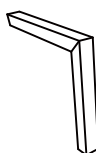
1PC

B SEAT



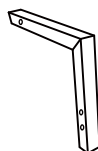
1PC

C LEFT ARM



1PC

D RIGHT ARM



1PC

Z HARDWARE IDENTIFICATION

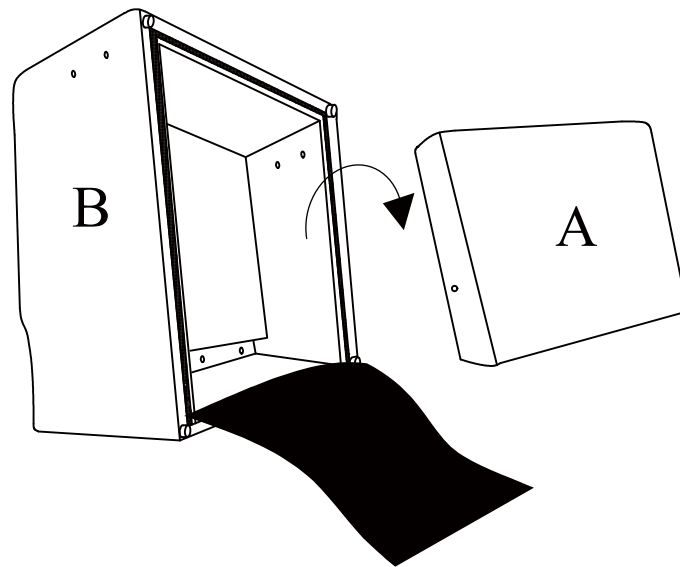
NO	DESCRIPTION	FIGURE	QTY
1	BOLT (M8*65MM)		6 PCS
2	BOLT (M8*85MM)		2 PCS
3	FLAT WASHER (M8)-SR		6 PCS
4	HALF MOON WASHER		2 PCS
5	NUT		8 PCS
6	OPEN END WRENCH		1 PC
7	ALLENKEY		1 PC

ITEM: 903095

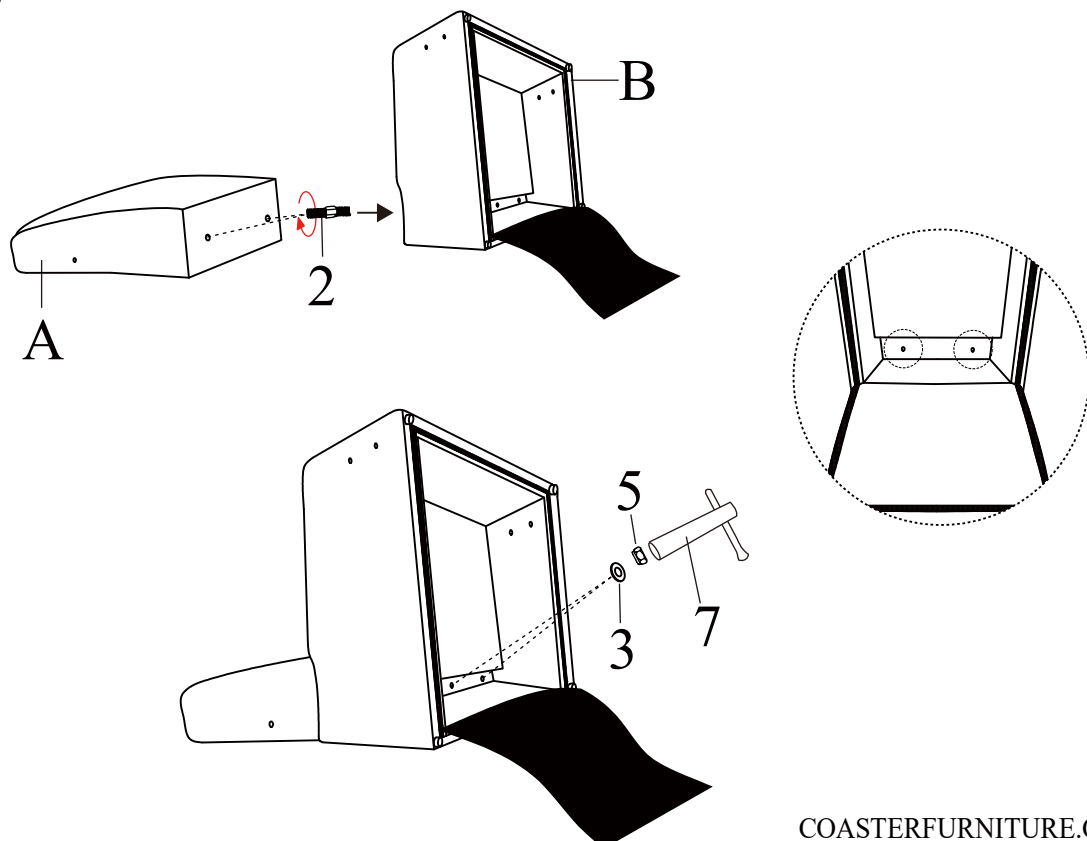
ASSEMBLY INSTRUCTIONS



STEP 1



STEP 2



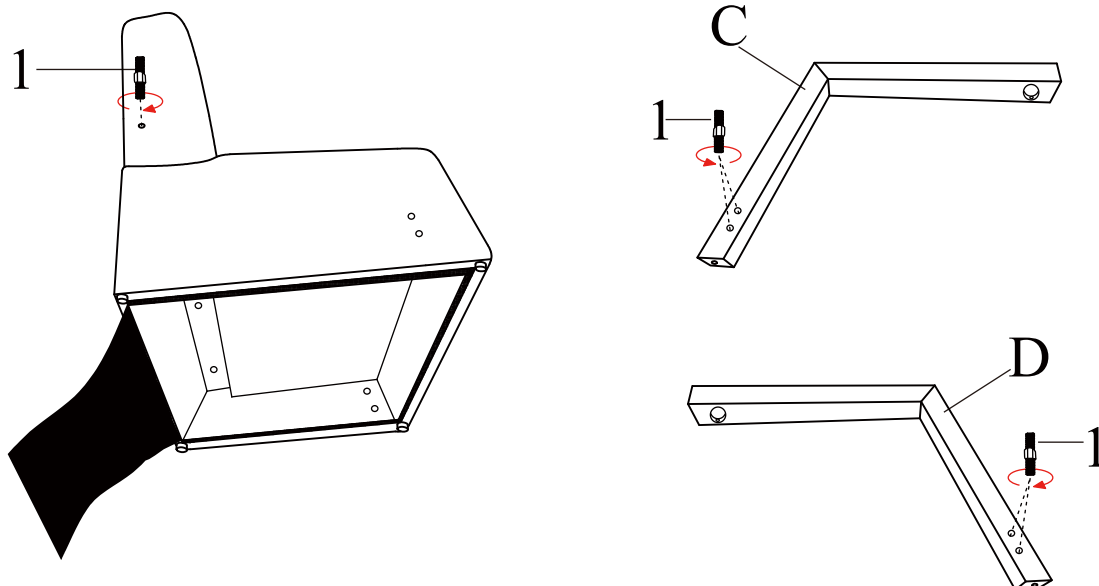
COASTERFURNITURE.COM

ITEM:903095

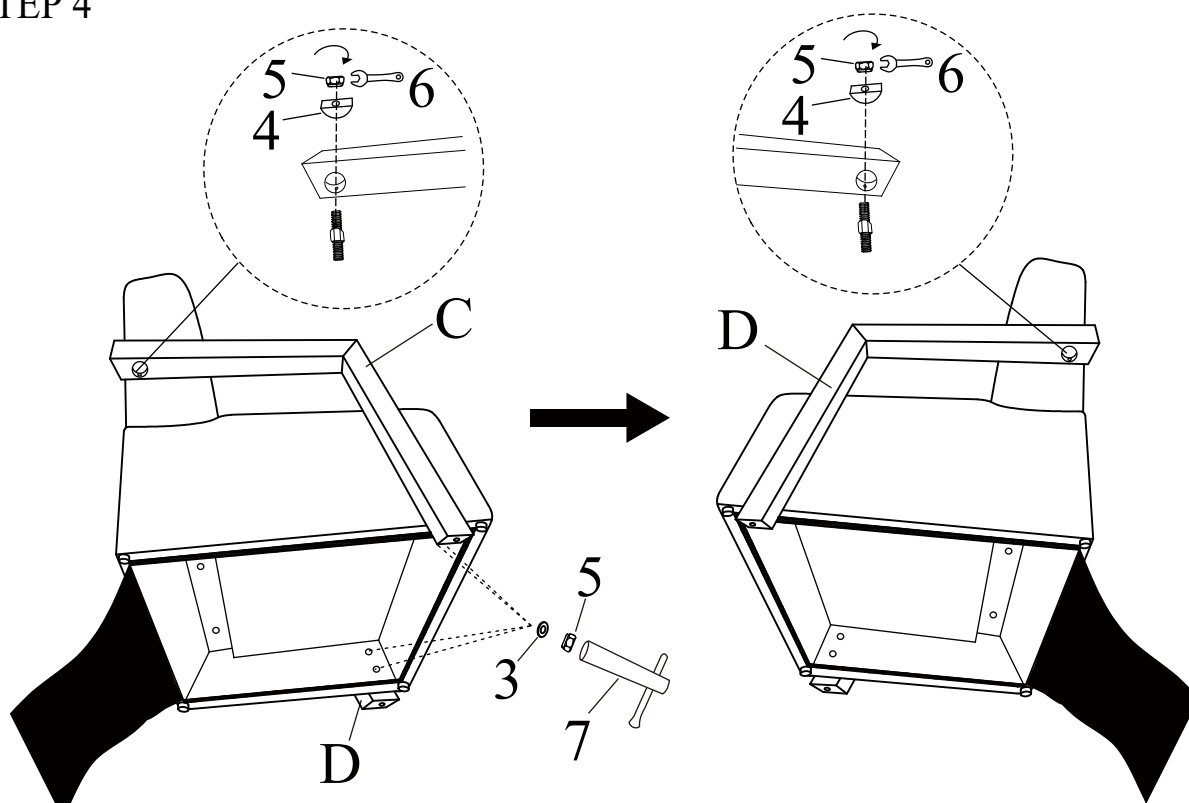
ASSEMBLY INSTRUCTIONS



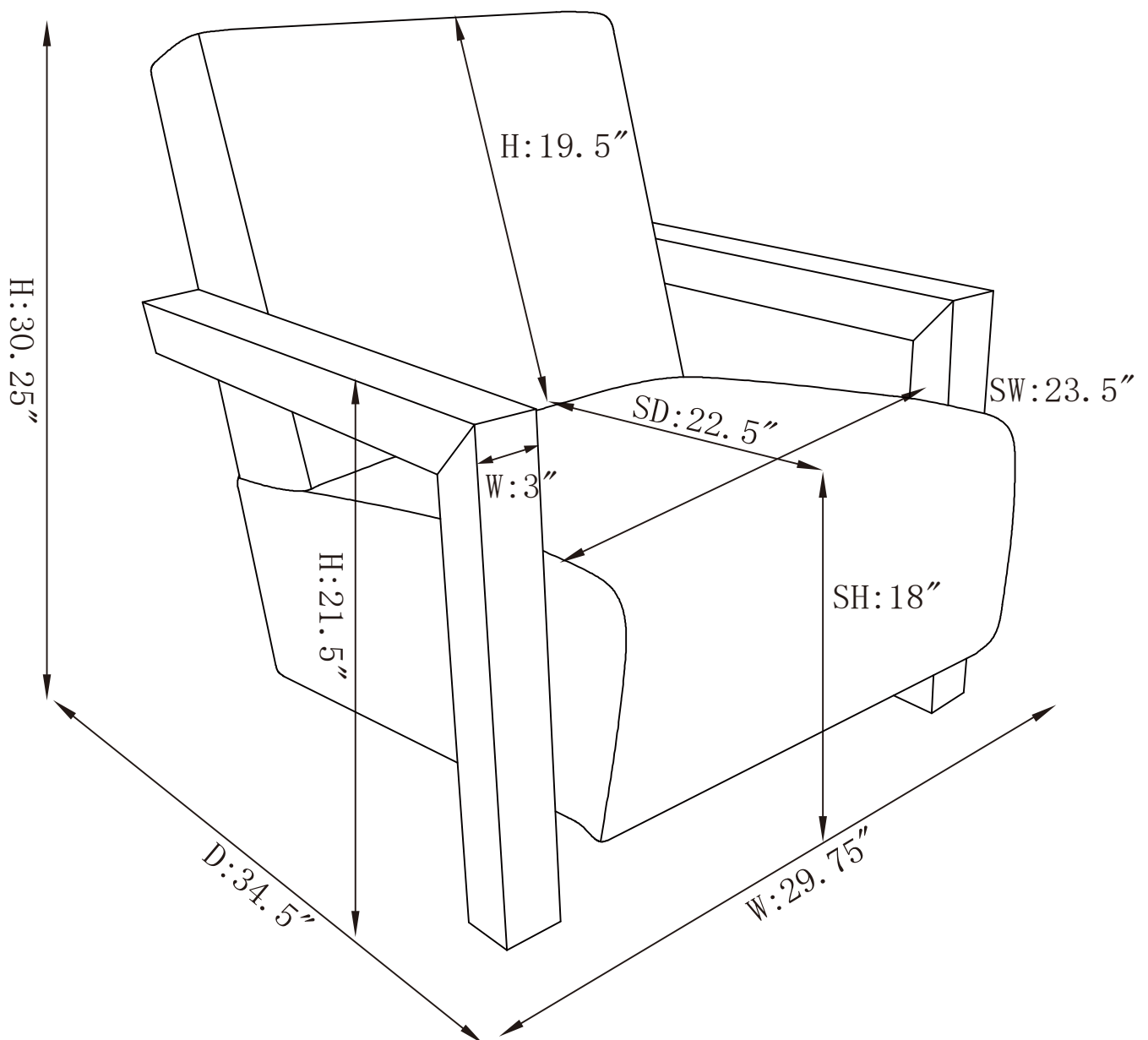
STEP 3



STEP 4



COASTERFURNITURE.COM



Note : Dimension tolerance $\pm 5\%$

