

**ASSEMBLY INSTRUCTIONS**  
**COASTER FINE FURNITURE**



*Fine Furniture for every stage of life*

**CABINET**

**723512**

## Anti-tipping Restraint Instructions

### Important note:

Pre fixed wall straps have been provided for your safety and we recommend that once in position the unit is secured using these.

When drilling into walls, always check there are no hidden wires or pipes etc...

Put pull ring(C) into wall bracket(D).

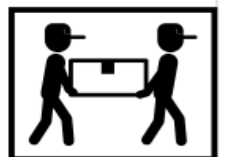
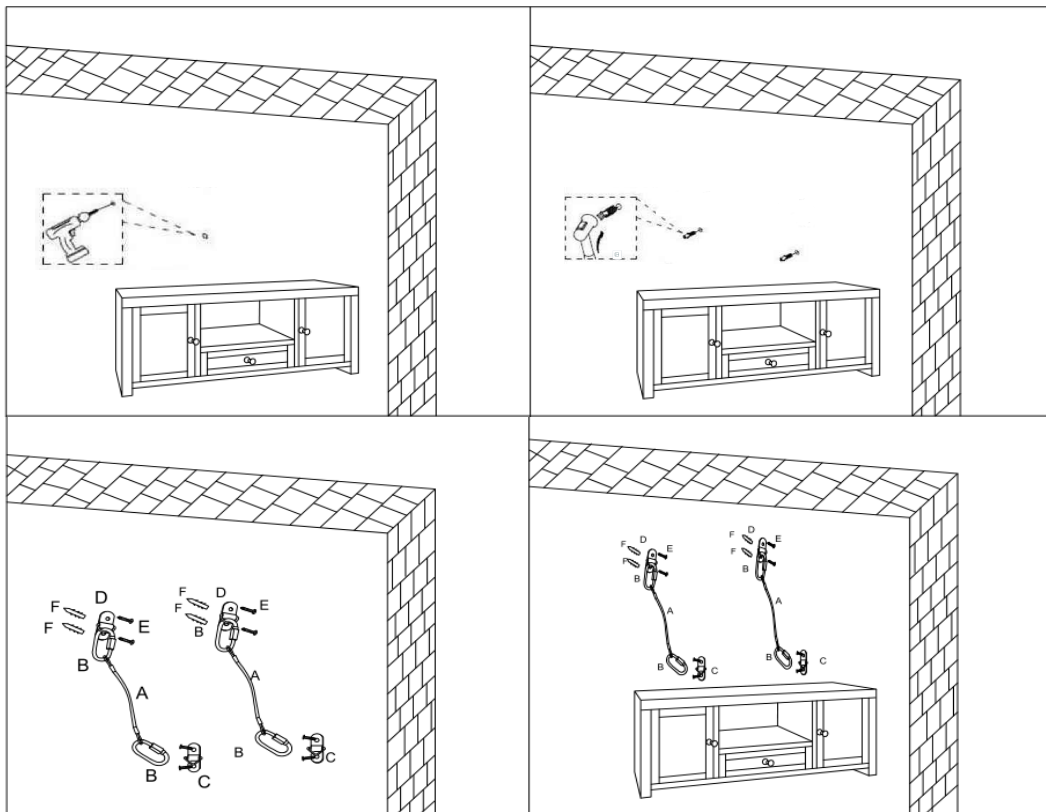
Position the bracket on your wall and mark the holes to be drilled. We recommend the bracket is fitted just below the top of your unit so that it is not visible when the unit is in place






Attach bracket (D), with pull ring (C) in place, using screws and wall plugs

Attach the strap (A) to the back of the unit using hoop (B). Ensure the hoop (B) is locked.

Carefully lift the unit into place and attach the free end of strap (A) to pull ring (C) on the wall, using hoop (B) and lock it.

Check to make sure all parts are secure and carefully move unit into position.



A		1PC
B		1PC
C		1PC
D		1PC
E		1PC

