

ASSEMBLY INSTRUCTIONS
COASTER FINE FURNITURE



Fine Furniture for every stage of life

805622
WRITING DESK

ITEM: 805622

ASSEMBLY INSTRUCTIONS

ASSEMBLY TIPS:

1. Remove hardware from box and sort by size.
2. Please check to see that all hardware and parts are present prior to start of assembly.
3. Please follow attached instructions in the same sequence as numbered to assure fast & easy assembly.



WARNING!

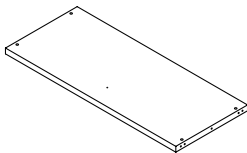
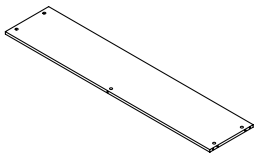
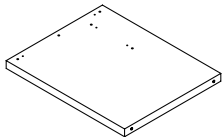
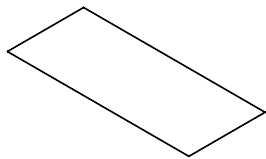
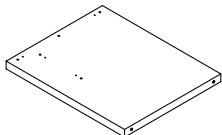
1. Don't attempt to repair or modify parts that are broken or defective. Please contact the store immediately.
2. This product is for home use only and not intended for commercial establishments.



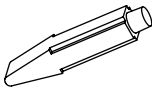

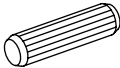
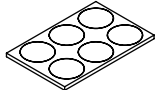
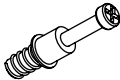
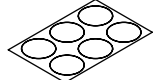

ASSEMBLY TIME

40 MINUTES

PARTS IDENTIFICATION

A	TOP PANEL		1 PC	D	BACK PANEL		1 PC
B	LEFT SIDE PANEL		1 PC	E	GLASS		1 PC
C	RIGHT SIDE PANEL		1 PC				

HARDWARE IDENTIFICATION

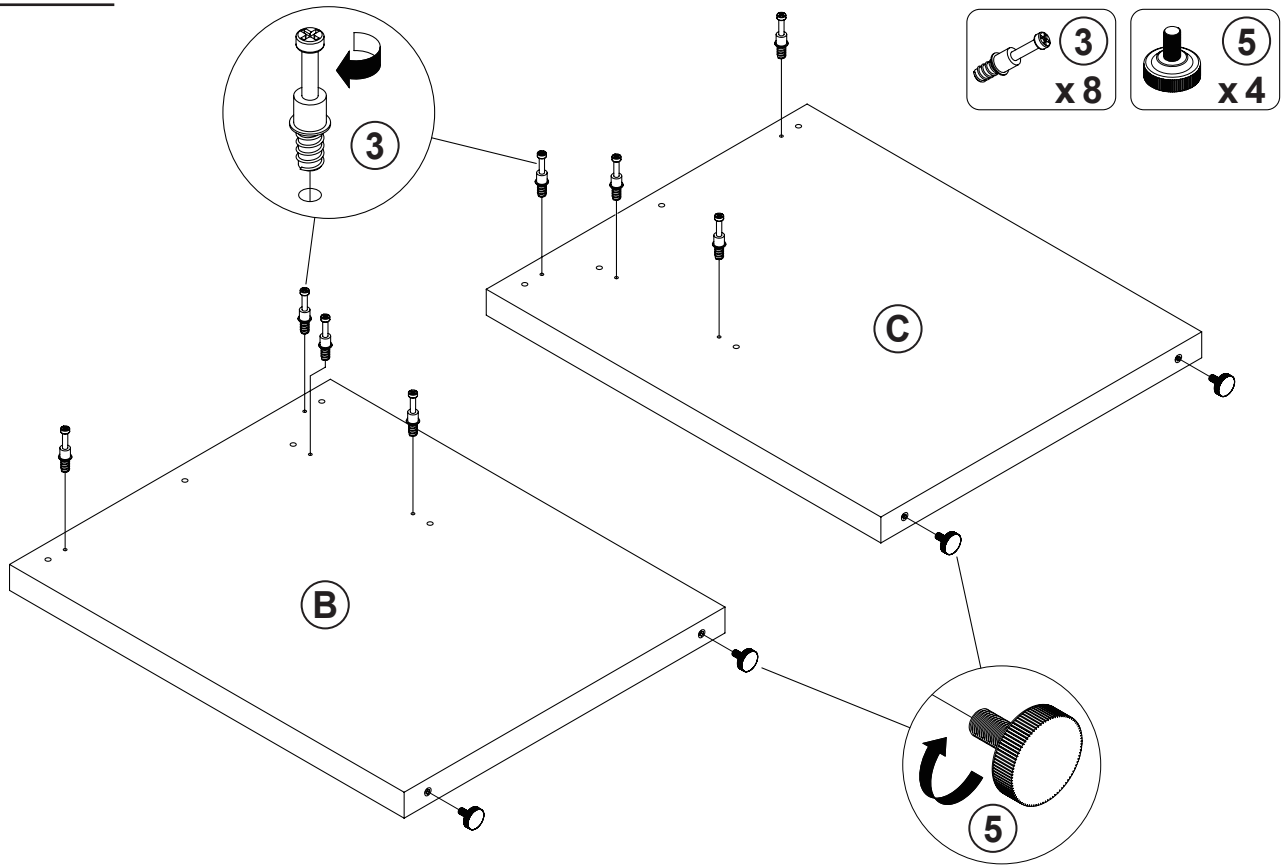
Z							
NO	DESCRIPTION	FIGURE	Q'TY	NO	DESCRIPTION	FIGURE	Q'TY
1	GLUE 15g		1 PC	5	PLASTIC FEET M8x14mm		4 PCS
2	WOODEN DOWEL Ø8x30mm		10 PCS	6	FILLING PIECE Ø12mm x 6 HOLE		1 PC
3	CAM BOLT Ø7x35.5mm SR		9 PCS	7	STICKER Ø20mm		2 PCS
4	CAM LOCK Ø15x12mm SR		9 PCS				

NOTE:

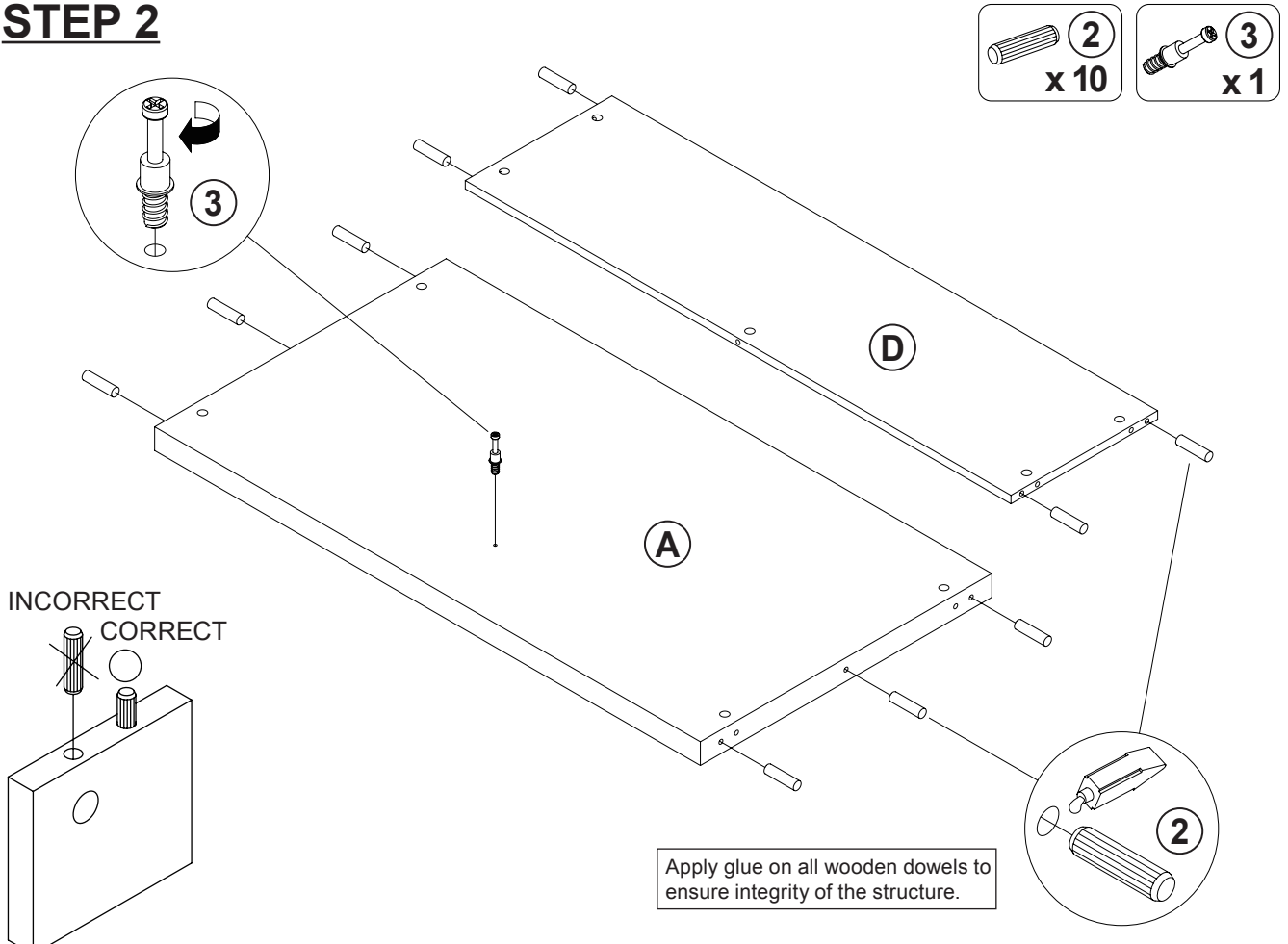
Phillips head screw driver is required in the assembly process; however, manufacturer does not provide this item.

ITEM: 805622

STEP 1



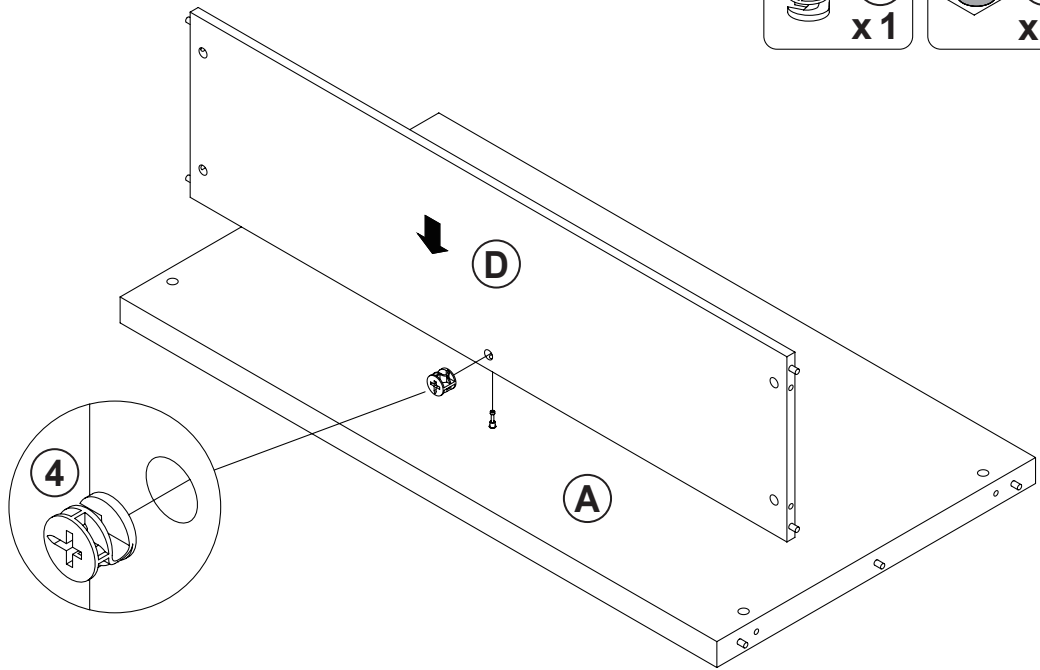
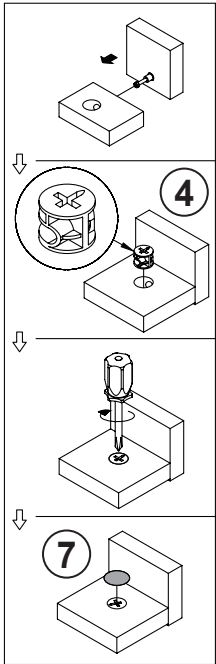
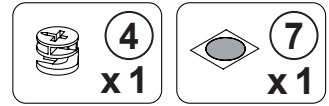
STEP 2



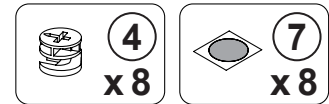
ITEM: 805622

COASTER
FINE FURNITURE

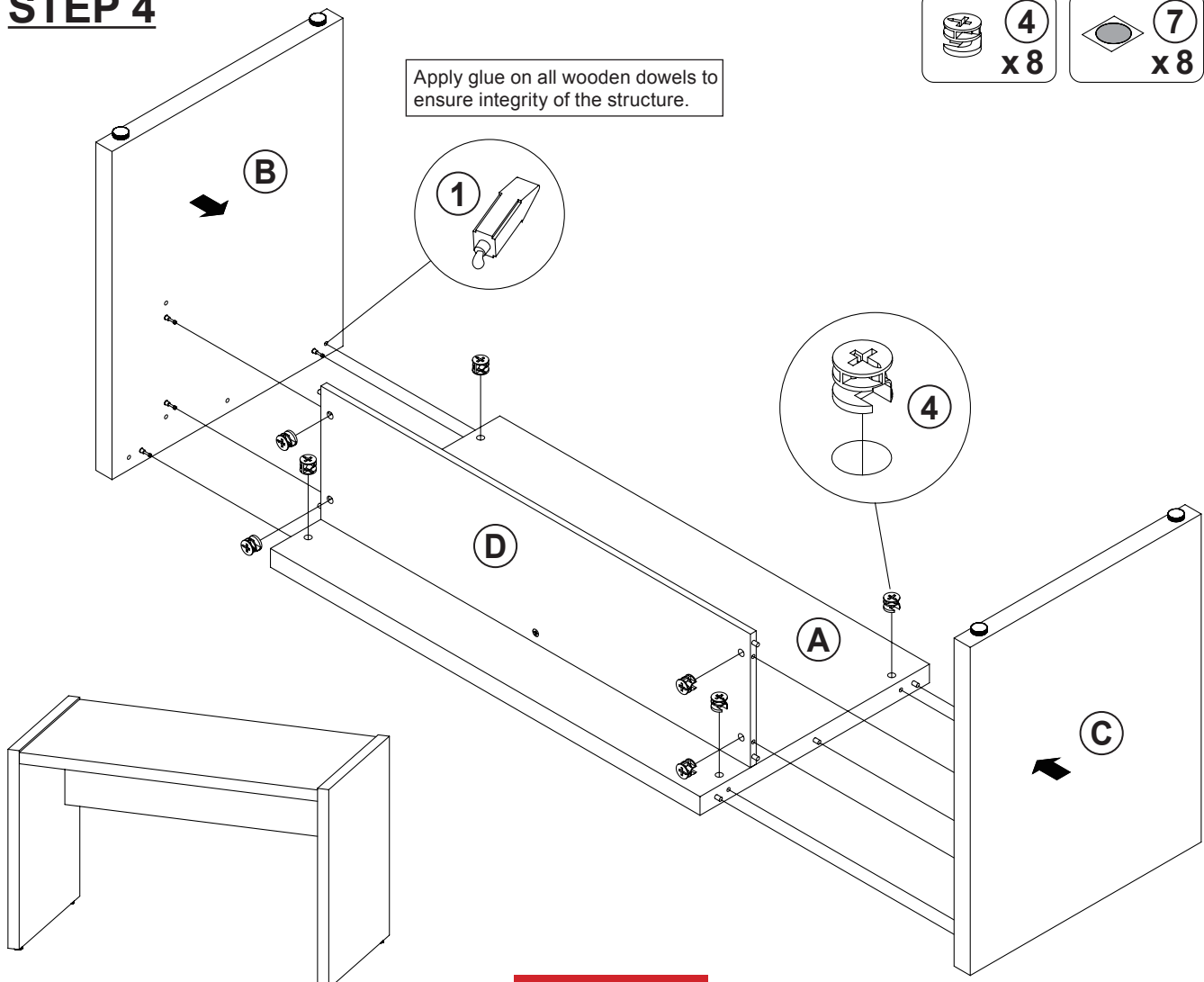
STEP 3



STEP 4

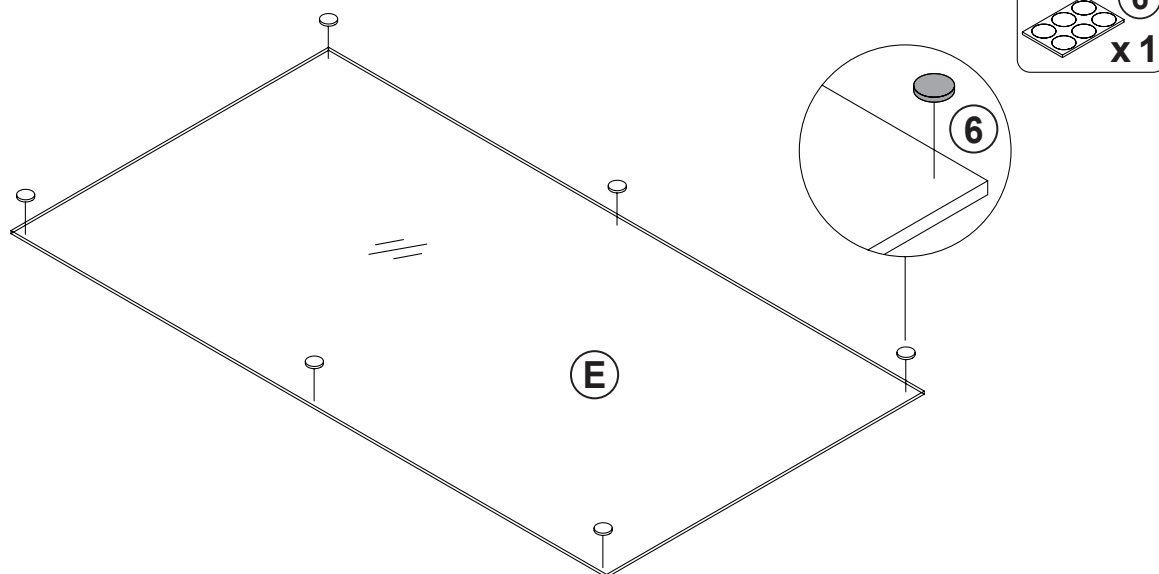


Apply glue on all wooden dowels to ensure integrity of the structure.

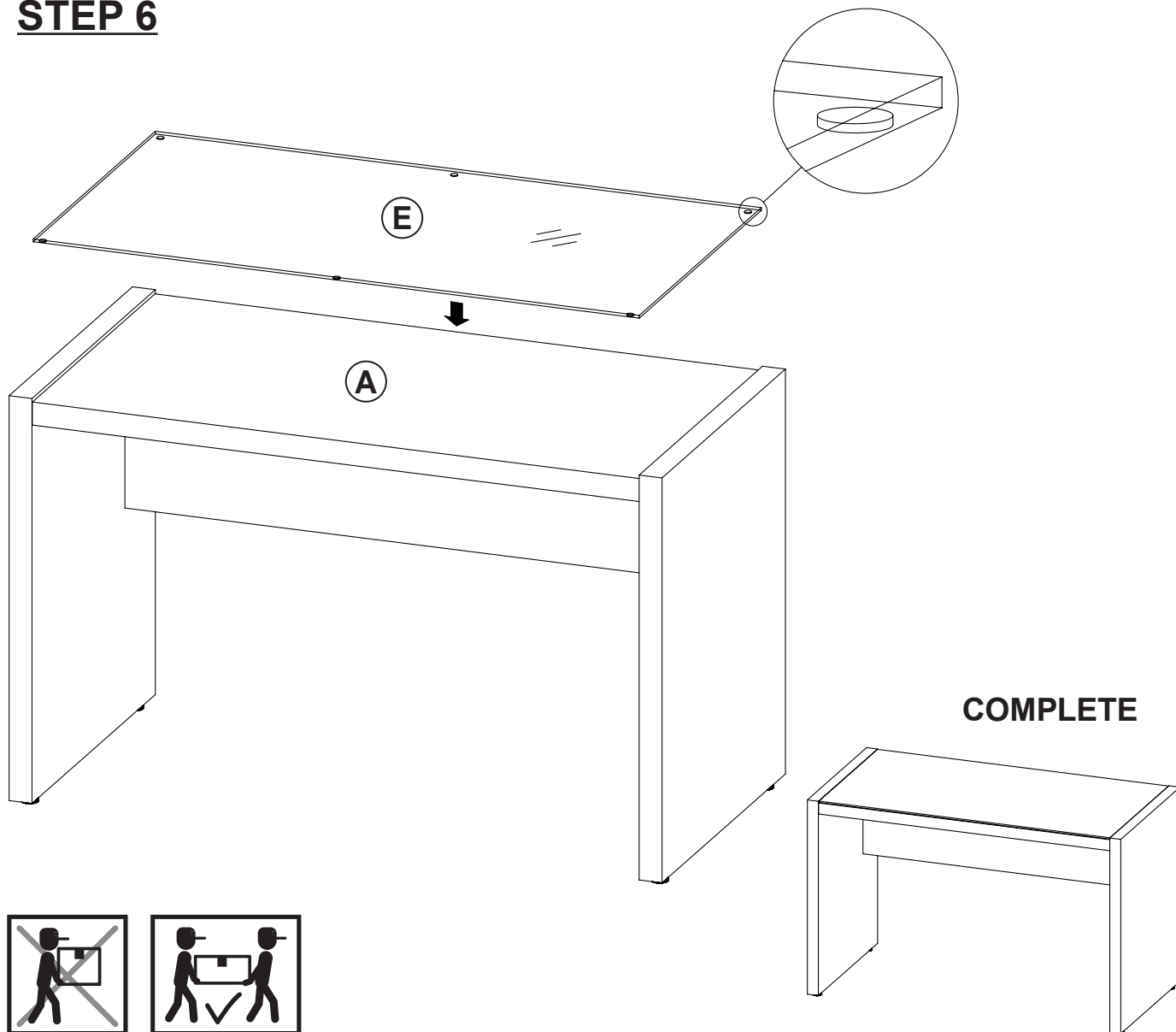


ITEM: 805622

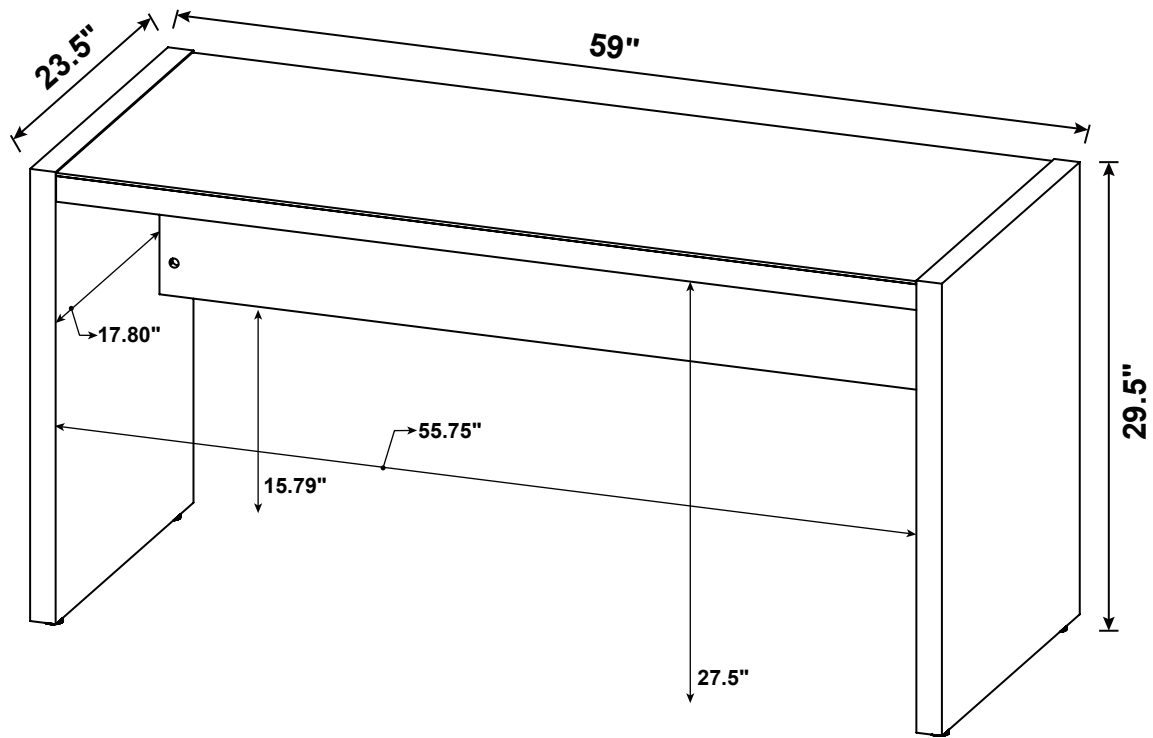
STEP 5



STEP 6



ITEM: 805622



Note : Dimension tolerance $\pm 5\%$