

ASSEMBLY INSTRUCTIONS
COASTER FINE FURNITURE



Fine Furniture for every stage of life

183020
DINING TABLE

ITEM: 183020

ASSEMBLY INSTRUCTIONS

ASSEMBLY TIPS:

1. Remove hardware from box and sort by size.
2. Please check to see that all hardware and parts are present prior to start of assembly.
3. Please follow attached instructions in the same sequence as numbered to assure fast & easy assembly.



WARNING!

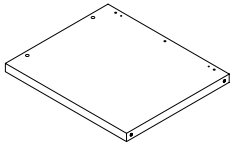
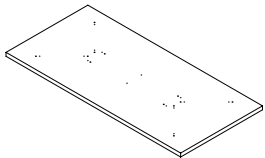
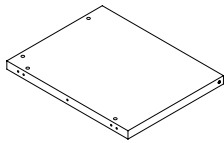
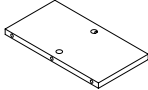
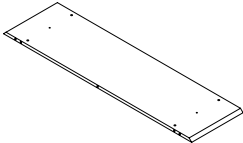
1. Don't attempt to repair or modify parts that are broken or defective. Please contact the store immediately.
2. This product is for home use only and not intended for commercial establishments.



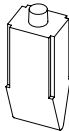

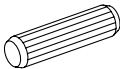

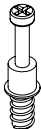
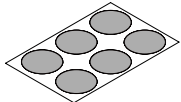
ASSEMBLY TIME

60 MINUTES

PARTS IDENTIFICATION

| | |
|--|---|
| <p>A LONG SIDE PANEL</p>  <p>2 PCS</p> | <p>D TOP</p>  <p>1 PC</p> |
| <p>B SHORT SIDE PANEL</p>  <p>2 PCS</p> | <p>E CROSS BRACE</p>  <p>2PCS</p> |
| <p>C LOWER DIVIDER PANEL</p>  <p>2PCS</p> | |

HARDWARE IDENTIFICATION

| Z | NO | DESCRIPTION | FIGURE | Q'TY | NO | DESCRIPTION | FIGURE | Q'TY |
|---|----|--------------------------|---|--------|----|-------------------------|---|--------|
| | 1 | GLUE 40g |  | 1 PC | 4 | CAM LOCK Ø15x12mm SR |  | 22 PCS |
| | 2 | WOODEN DOWEL Ø8x30mm |  | 26 PCS | 5 | PLASTIC FEET M8x14mm |  | 6 PCS |
| | 3 | CAM BOLT Ø7x35.5mm SR |  | 22 PCS | 6 | STICKER Ø20mm |  | 4 PCS |

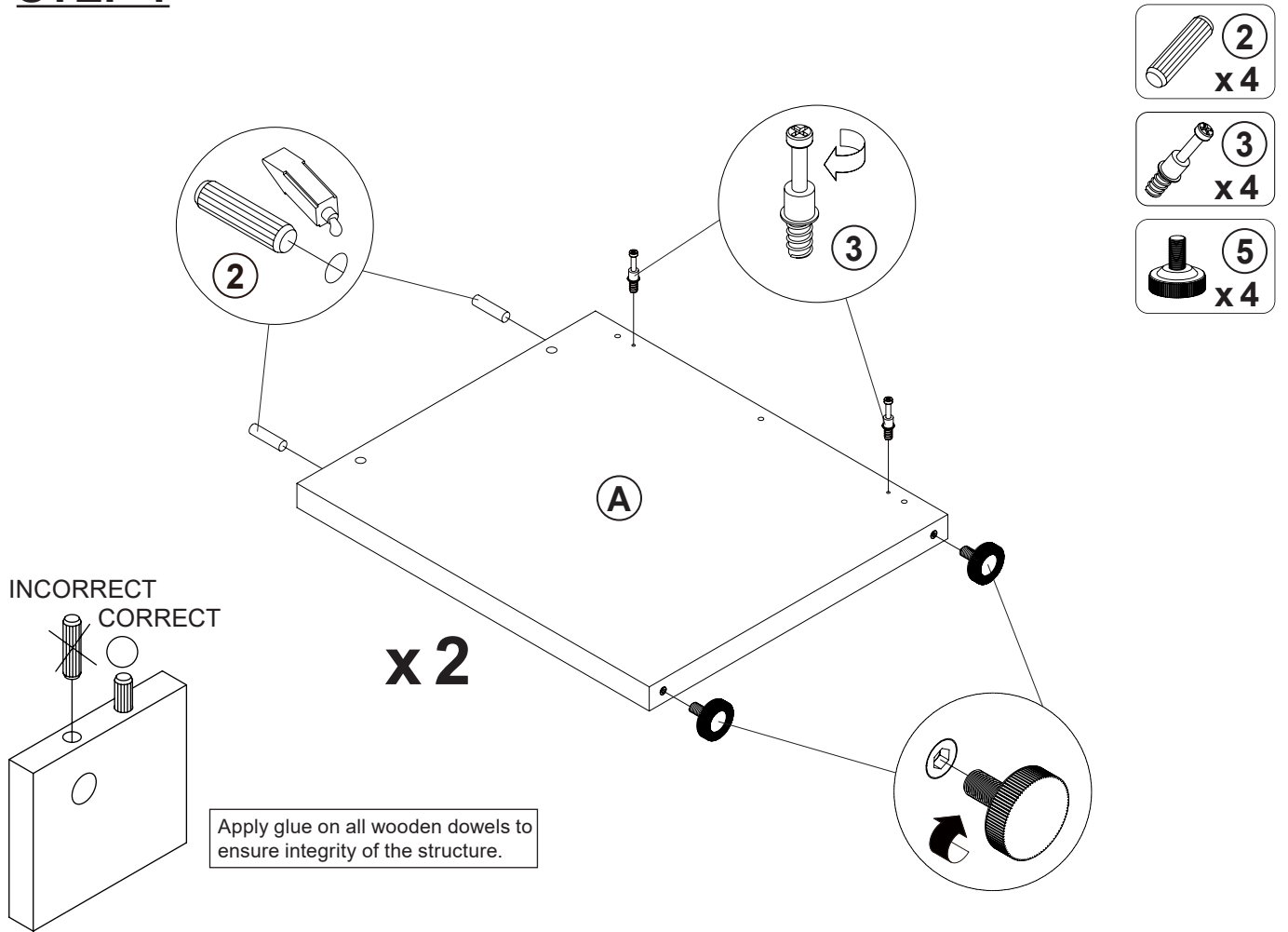
NOTE:

Phillips head screw driver is required in the assembly process; however, manufacturer does not provide this item.

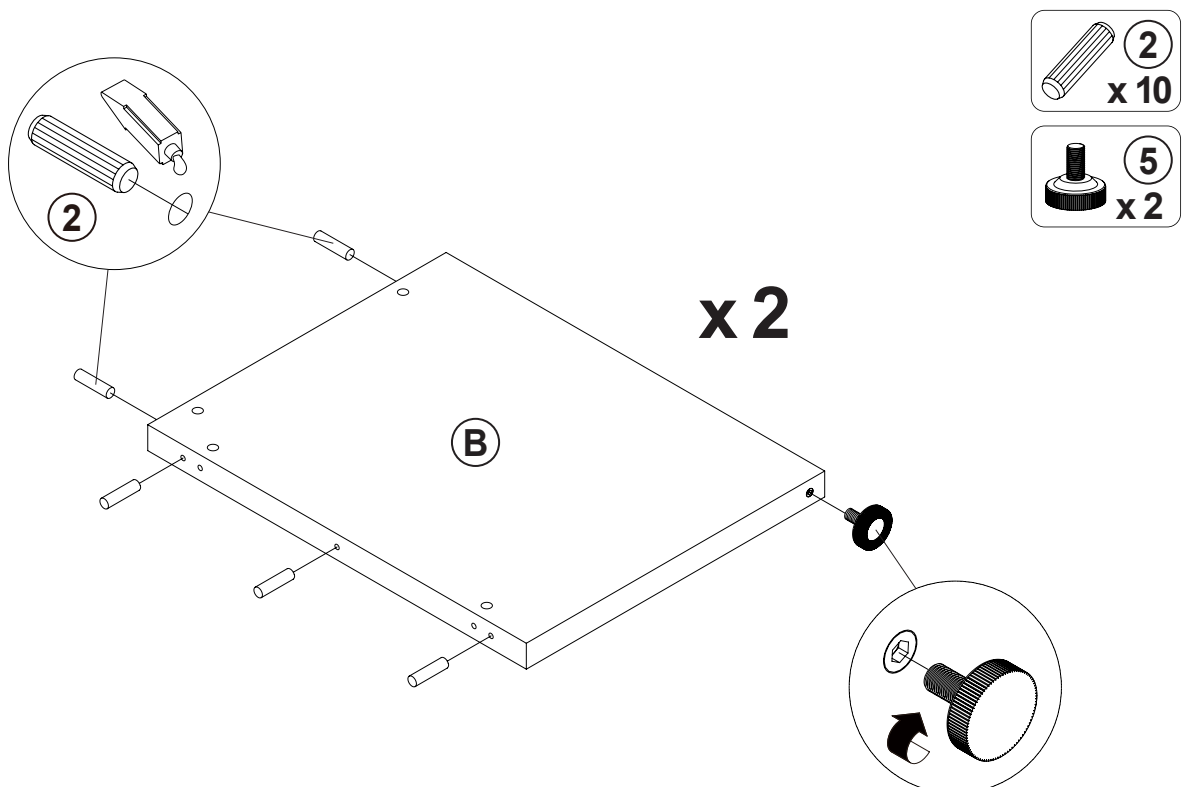
ITEM: **183020**

COASTER
FINE FURNITURE

STEP 1

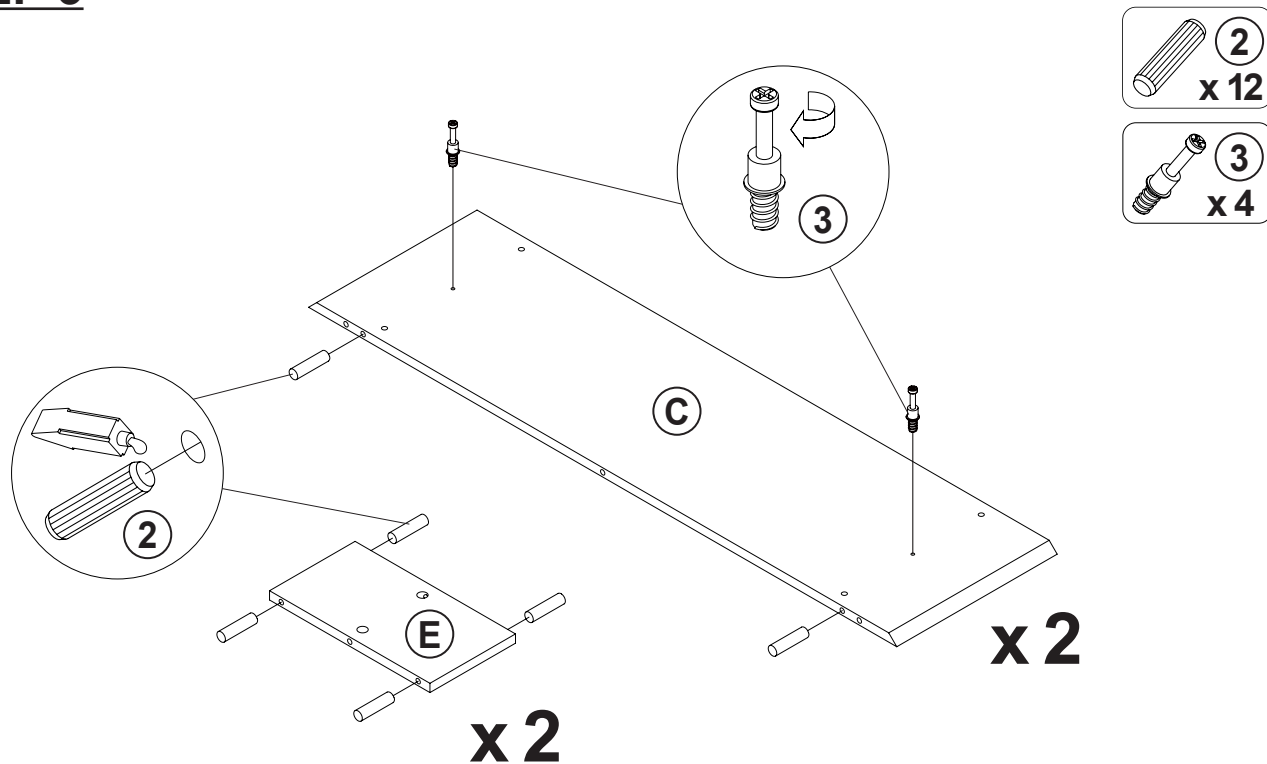


STEP 2

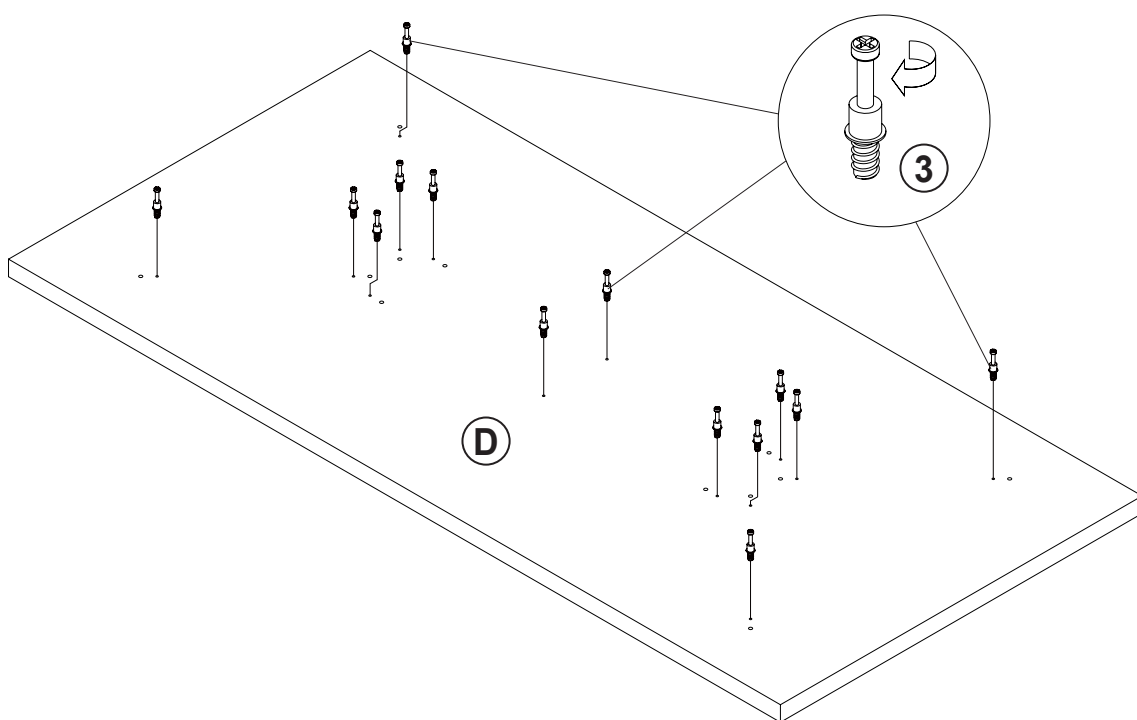
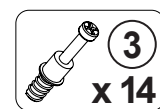


ITEM: **183020**

STEP 3



STEP 4

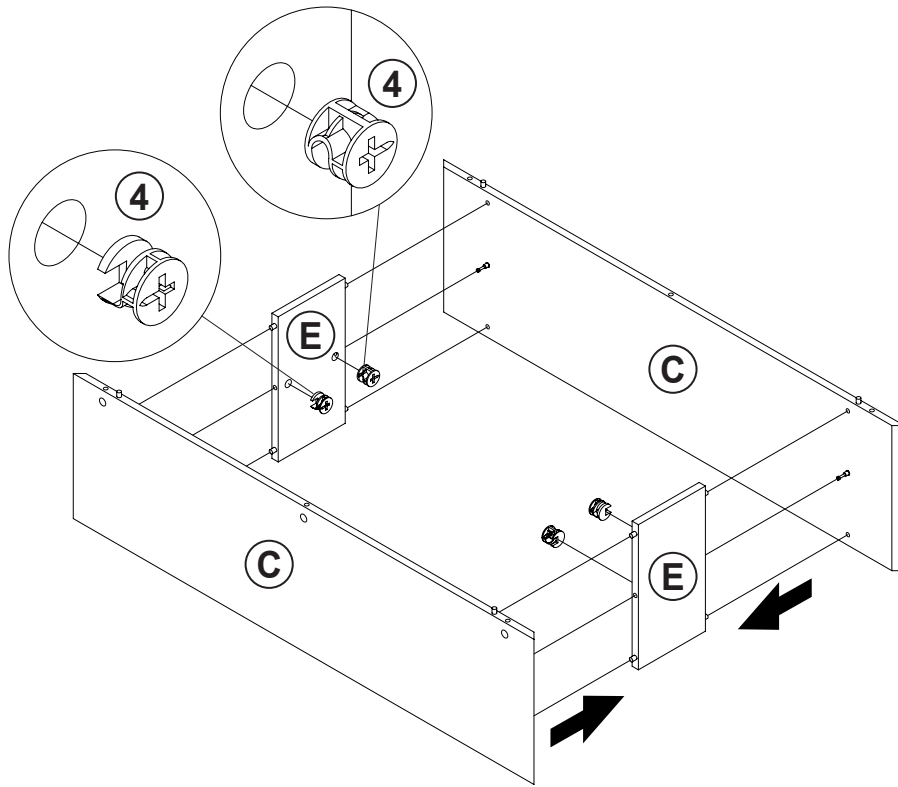
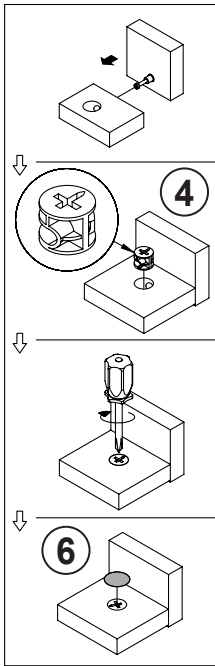
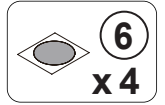


ITEM: **183020**

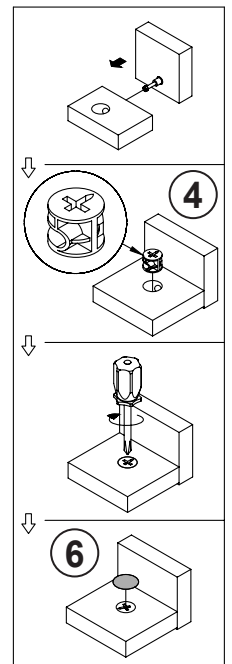
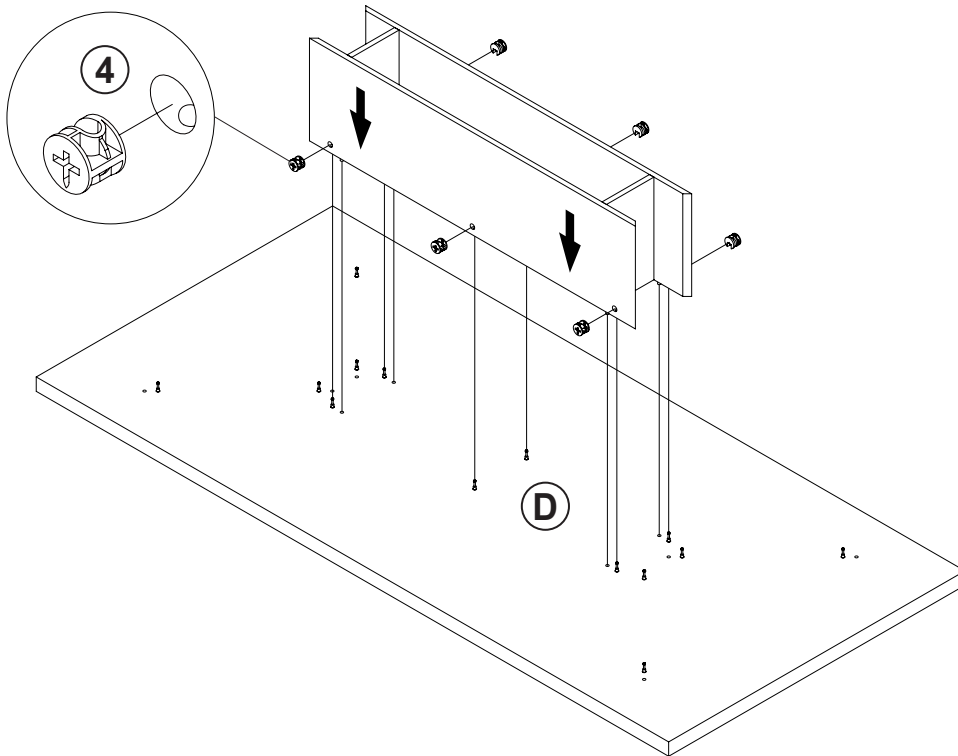
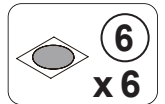
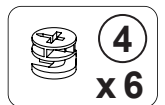
COASTER[®]

FINE FURNITURE

STEP 5



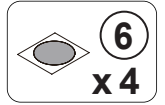
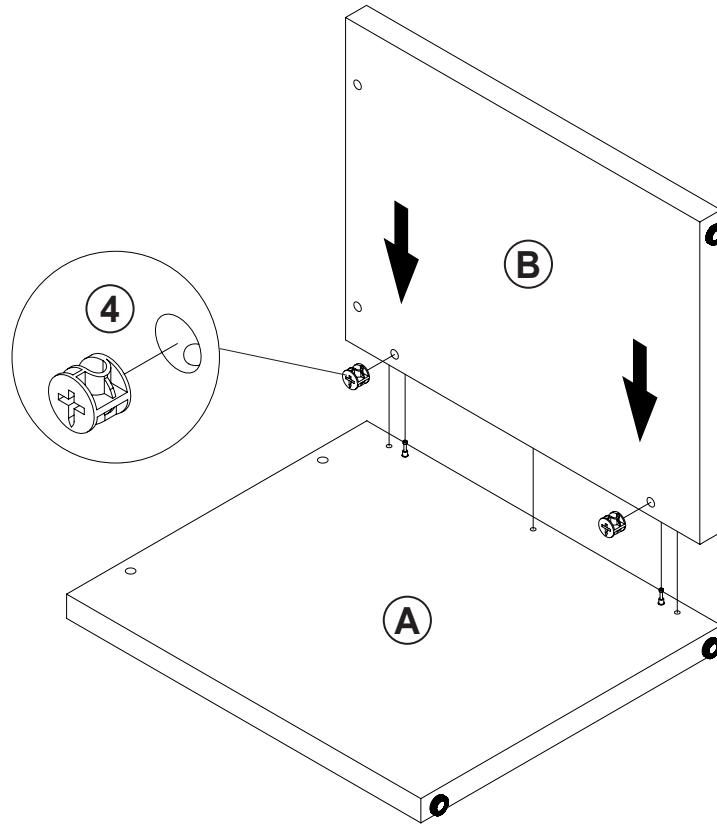
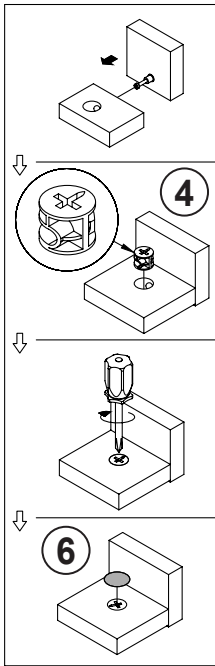
STEP 6



ITEM: 183020

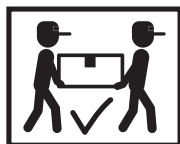
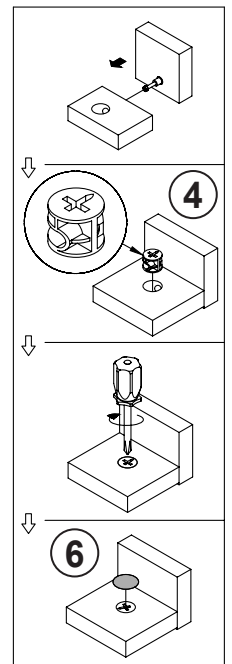
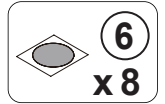
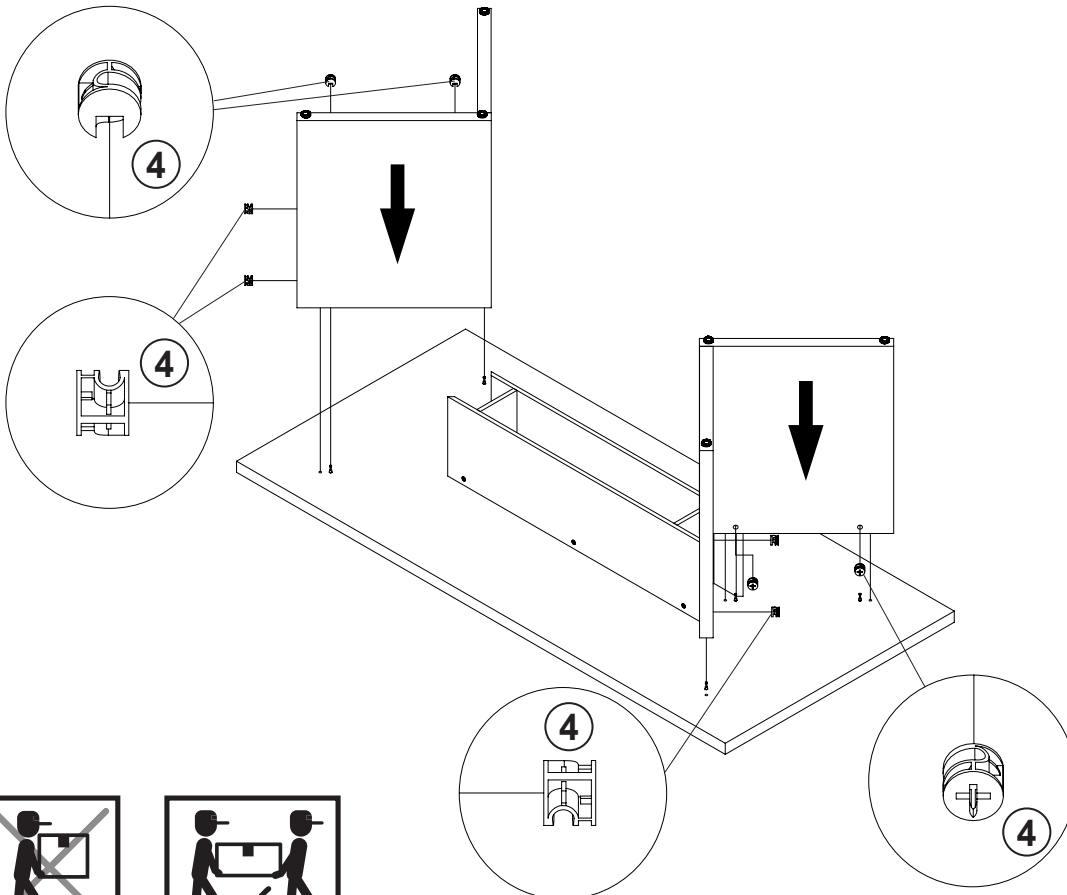
COASTER
FINE FURNITURE

STEP 7

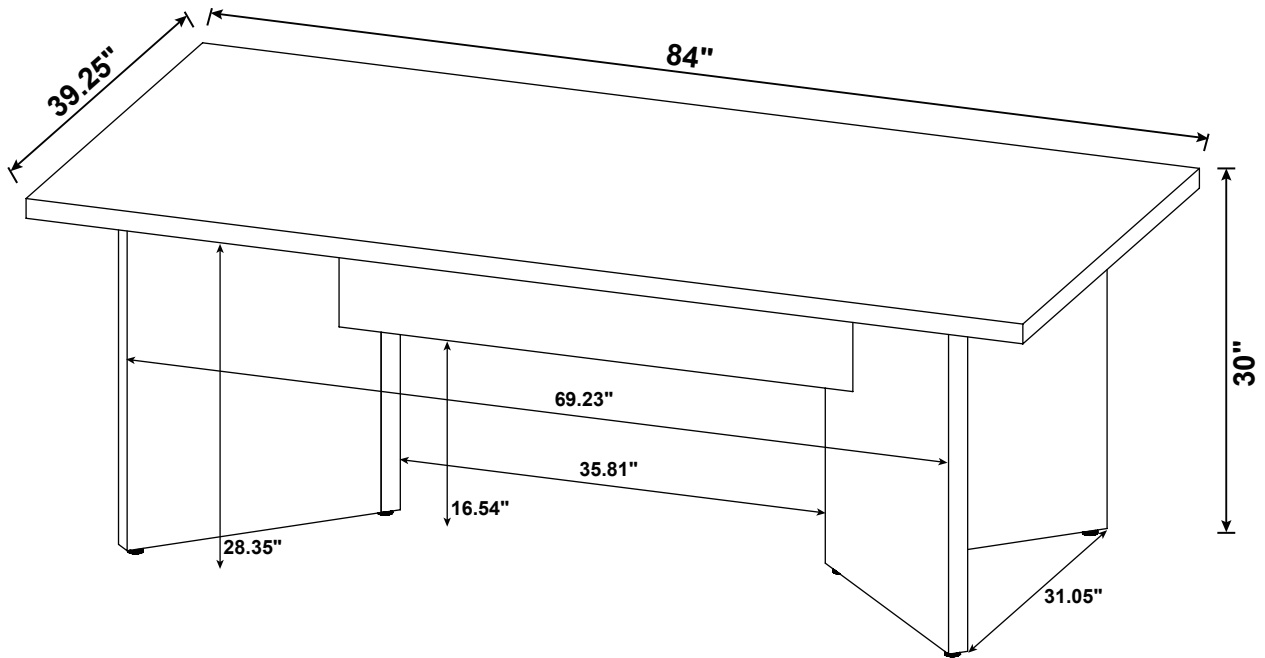


x 2

STEP 8



ITEM: 183020



Note : Dimension tolerance $\pm 5\%$