

ASSEMBLY INSTRUCTIONS COASTER FINE FURNITURE



Fine Furniture for every stage of life

120356 BAR STOOL

REVISION 0:06/16/2020
REVISION 1:08/04/2022
REVISION 2:11/29/2024

COASTERFURNITURE.COM

ITEM :120356
ASSEMBLY INSTRUCTIONS



ASSEMBLY TIPS:

1. Remove hardware from box and sort by size.
2. Please check to see that all hardware and parts are present prior to start of assembly.
3. Please follow attached instructions in the same sequence as numbered to assure fast & easy assembly.





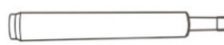


Warning!

1. Don't attempt to repair or modify parts that are broken or defective. Please contact the store immediately.
2. This product is for home use only and not intended for commercial establishments.



ASSEMBLY TIME 5 MINUTES

PARTS IDENTIFICATION

	PART NAME	FIGURE	QTY
A	SEAT		1PC
B	FOOT REST		1PC
C	GAS CYLINDER		1PC
D	BASE		1PC
E	COVER RING		1PC

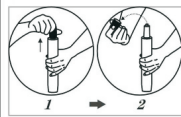
HARDWARE IDENTIFICATION

	HARDWARE NAME	FIGURE	QTY
1	BOLTS M6x16MM		4PCS
2	ALLEN WRENCH M6		1PC

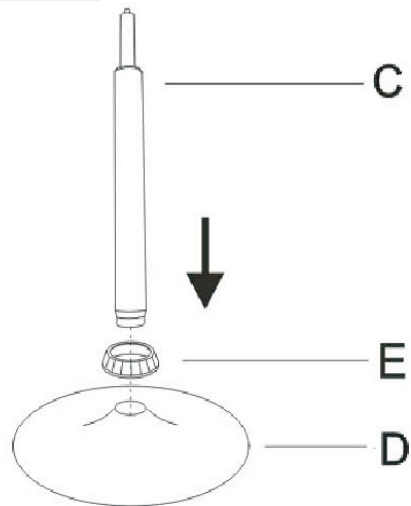
ITEM :120356
ASSEMBLY INSTRUCTIONS



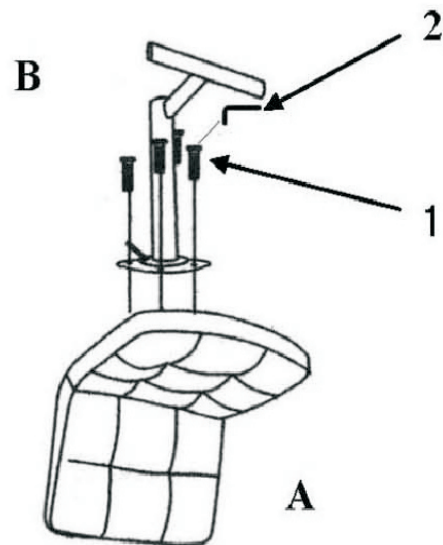
STEP 1



PLEASE PULL OUT THE
SHEATH BEFORE USING



STEP 2



STEP 3

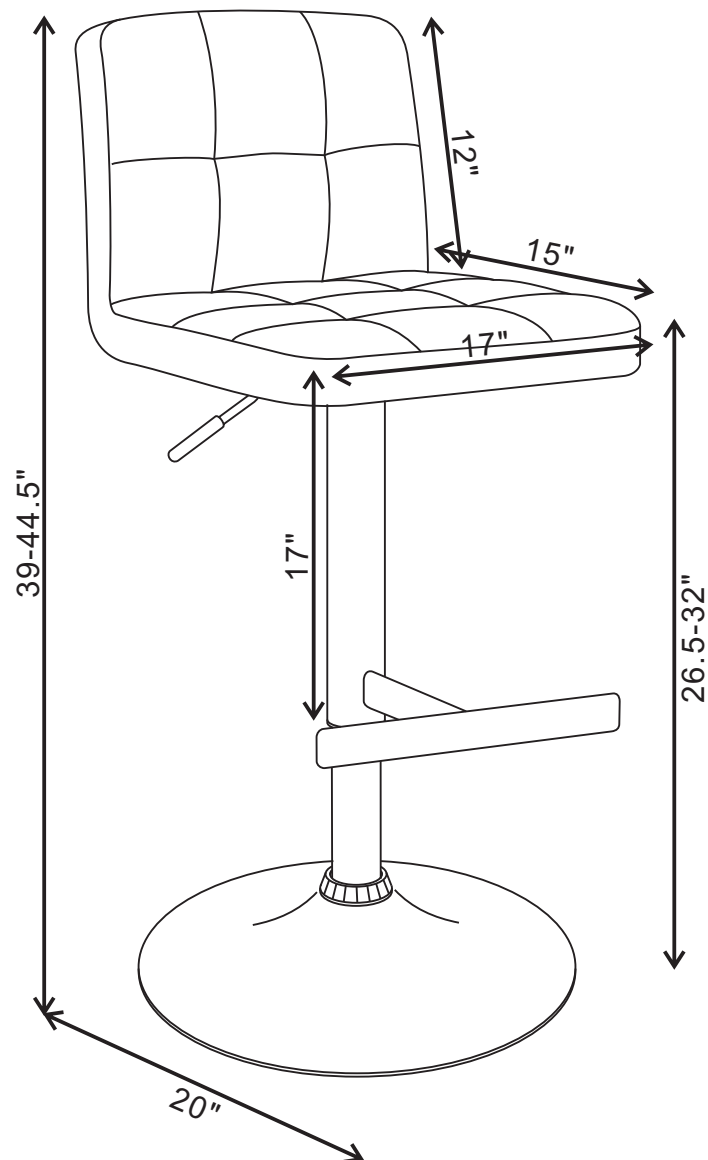
PLEASE TAKE THIS PART
INTO GAS SPRING



STEP 4



ITEM :120356
ASSEMBLY INSTRUCTIONS



Note:Dimension tolerance \pm 5%

COASTERFURNITURE.COM