



ASSEMBLY INSTRUCTIONS COASTER FINE FURNITURE



Fine Furniture for every stage of life

**551642
CORNER**

REVISION 0: 01/04/2022
REVISION 1: 03/07/2025

COASTERFURNITURE.COM

PAGE 1 OF 4

ITEM: 551642

ASSEMBLY INSTRUCTIONS

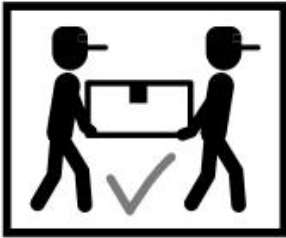
ASSEMBLY TIPS:

1. Remove hardware from box and sort by size.
2. Please check to see that all hardware and parts are present prior to start of assembly.
3. Please follow attached instructions in the same sequence as numbered to assure fast & easy assembly.



WARNING!

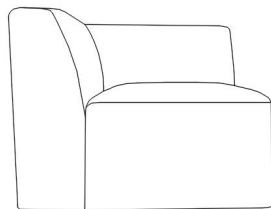
1. Don't attempt to repair or modify parts that are broken or defective. Please contact the store immediately.
2. This product is for home use only and not intended for commercial establishments.



ASSEMBLY TIME 15 MINUTES

PARTS IDENTIFICATION

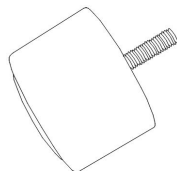
A



CORNER

1PC

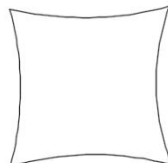
B



LEG

4PCS

C



PILLOW

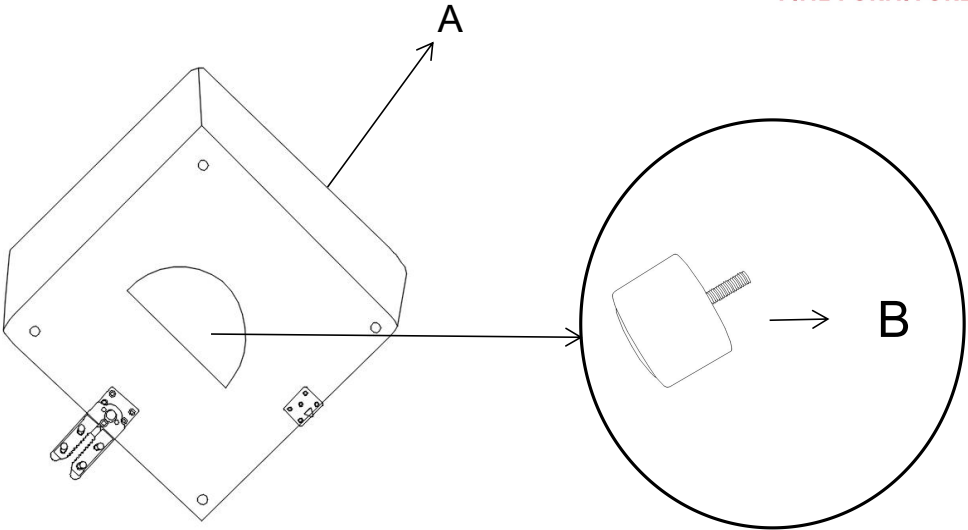
2PCS

ITEM: 551642

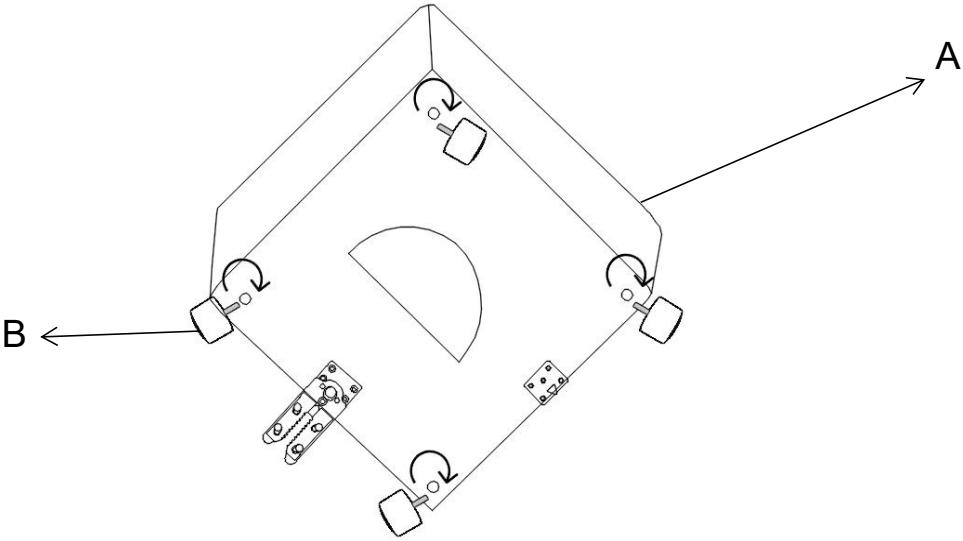
ASSEMBLY INSTRUCTIONS



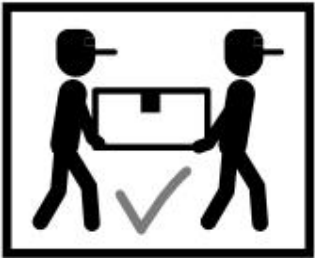
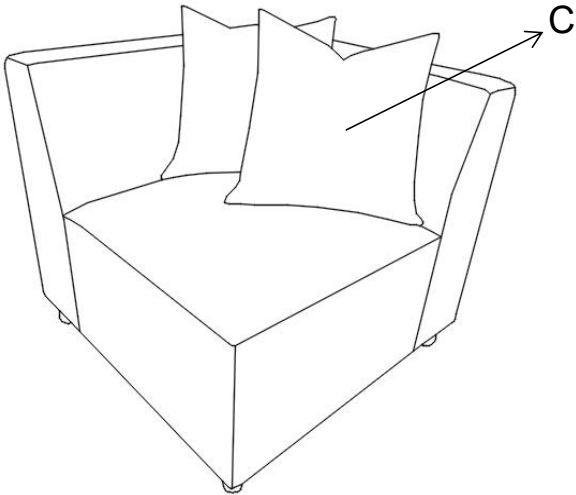
STEP 1



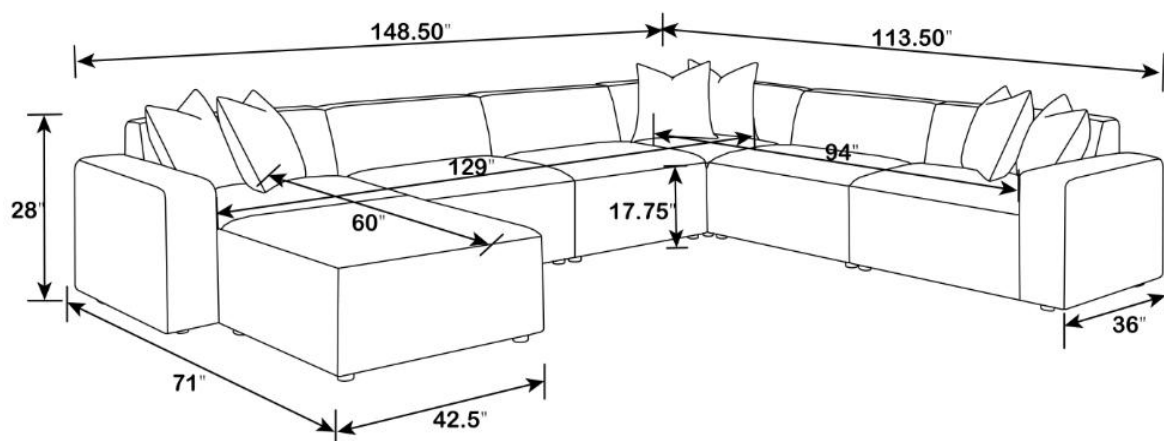
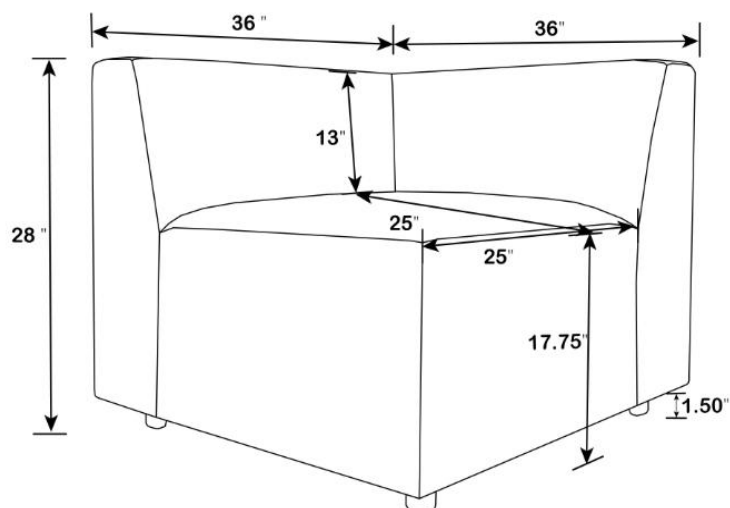
STEP 2



STEP 3



ITEM: 551642



Note : Dimension tolerance $\pm 5\%$

COASTERFURNITURE.COM