

*ASSEMBLY INSTRUCTIONS  
COASTER FINE FURNITURE*



*Fine Furniture for every stage of life*

**706213**  
**TV STAND**

# ITEM:706213



## ASSEMBLY INSTRUCTIONS

### ASSEMBLY TIPS:

1. Remove hardware from box and sort by size.
2. Please check to see that all hardware and parts are present prior to start of assembly.
3. Please follow attached instructions in the same sequence as numbered to assure fast & easy assembly.



### WARNING!

1. Don't attempt to repair or modify parts that are broken or defective. Please contact the store immediately.
2. This product is for home use only and not intended for commercial establishments.

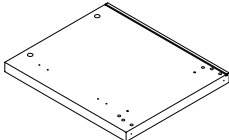
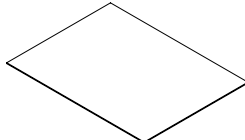
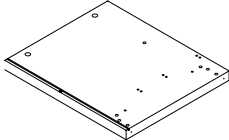
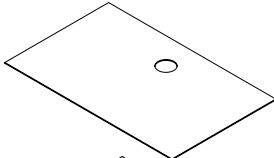
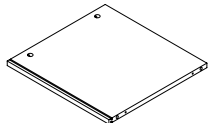
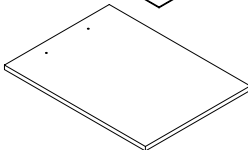
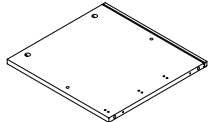
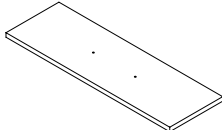
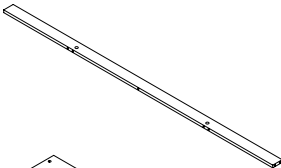
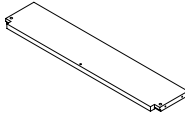
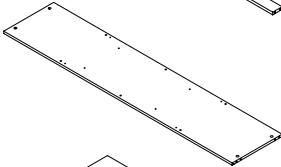
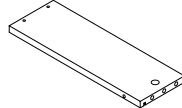
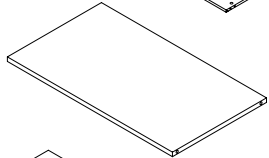
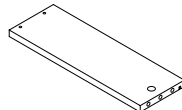
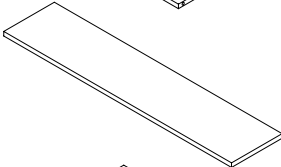
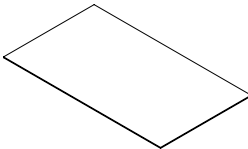
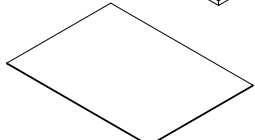
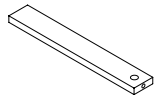


ASSEMBLY TIME

60 MINUTES

MAX TV SIZE : 75"

## PARTS IDENTIFICATION

A	LEFT SIDE PANEL		1 PC	J	BACK PANEL		1 PC
B	RIGHT SIDE PANEL		1 PC	K	RIGHT BACK PANEL		1 PC
C	LEFT DIVIDER PANEL		1 PC	L	DOOR		2 PCS
D	RIGHT DIVIDER PANEL		1 PC	M	DRAWER FRONT PANEL		1 PC
E	BOTTOM CROSSBAR		2 PCS	N	DRAWER BACK PANEL		1 PC
F	BOTTOM PANEL		1 PC	O	DRAWER LEFT SIDE PANEL		1 PC
G	RIGHT CROSS PANEL		1 PC	P	DRAWER RIGHT SIDE PANEL		1 PC
H	DECORATIVE STRIP		1 PC	Q	DRAWER BOTTOM PANEL		1 PC
I	LEFT BACK PANEL		1 PC	R	DRAWER BOTTOM SUPPORT		1 PC

### NOTE:

Phillips head screw driver is required in the assembly process; however, manufacturer does not provide this item.

# ITEM:706213

## HARDWARE IDENTIFICATION

Z							
NO	DESCRIPTION	FIGURE	Q'TY	NO	DESCRIPTION	FIGURE	Q'TY
1	GLUE 40g		1 PC	10	HINGE SCREW Ø4 x 15mm SR		16 PCS
2	WOODEN DOWEL Ø8 x 30mm		38 PCS	11	HANDLE L= 160mm BLK		3 PCS
3	CAM BOLT Ø7 x 35.5mm SR		19 PCS	12	BOLT M4x25mm BLK		6 PCS
4	CAM LOCK Ø15 x 12mm SR		19 PCS	13	GLIDES L = 350mm SR		1 SET
5	LONG SCREW Ø 4.5x42mm SR		4 PCS	14	GLIDES BOLT Ø6x13mm SR		12 PCS
6	SCREW Ø 4.3x35mm SR		5 PCS	15	BACK PANEL SUPPORT		6 PCS
7	PLASTIC FEET Ø15m		6 PCS	16	BACK PANEL SUPPORT SCREW Ø3 x 19mm SR		6 PCS
8	HINGE Ø35mm SR		2 PCS	17	PLASTIC COVER Ø 52mm		1 PC
9	HINGE Ø35mm SR		2 PCS	18	STICKER Ø20mm		4 PCS

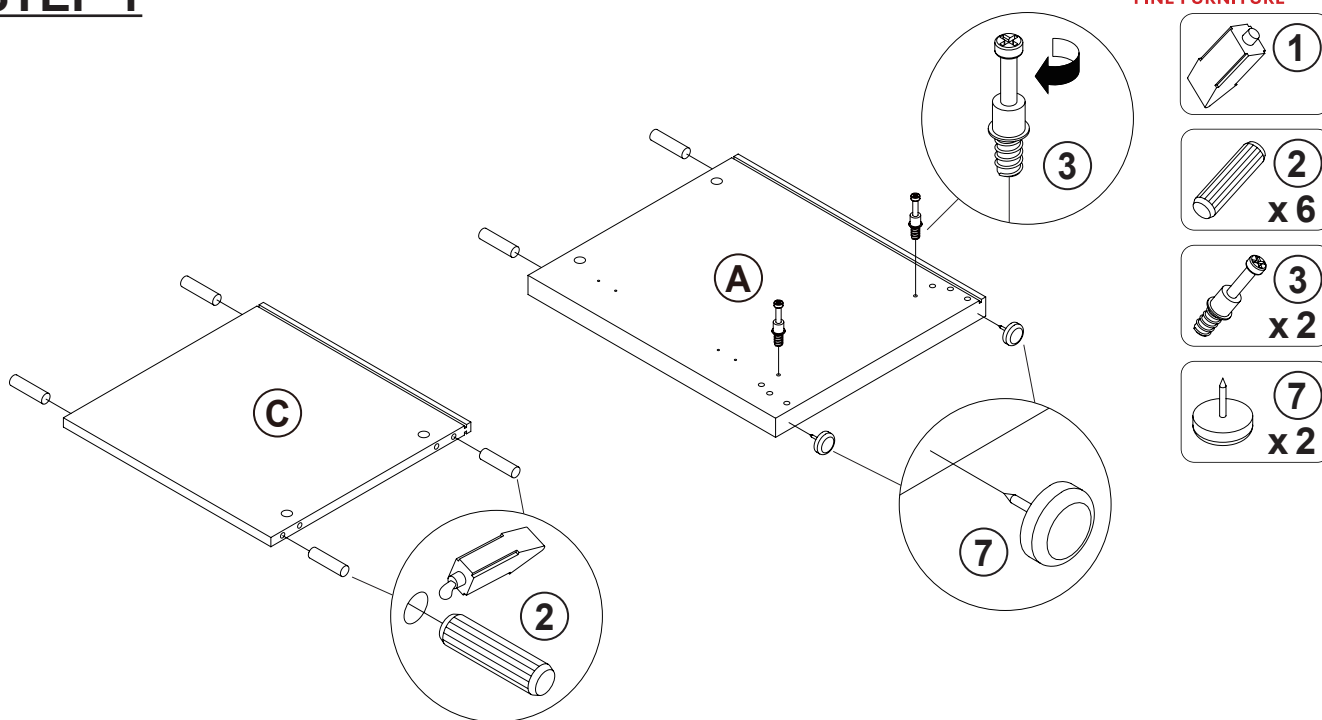
Z8, Z9, Z11, Z13, Z17 not included in blister packaging.

### NOTE:

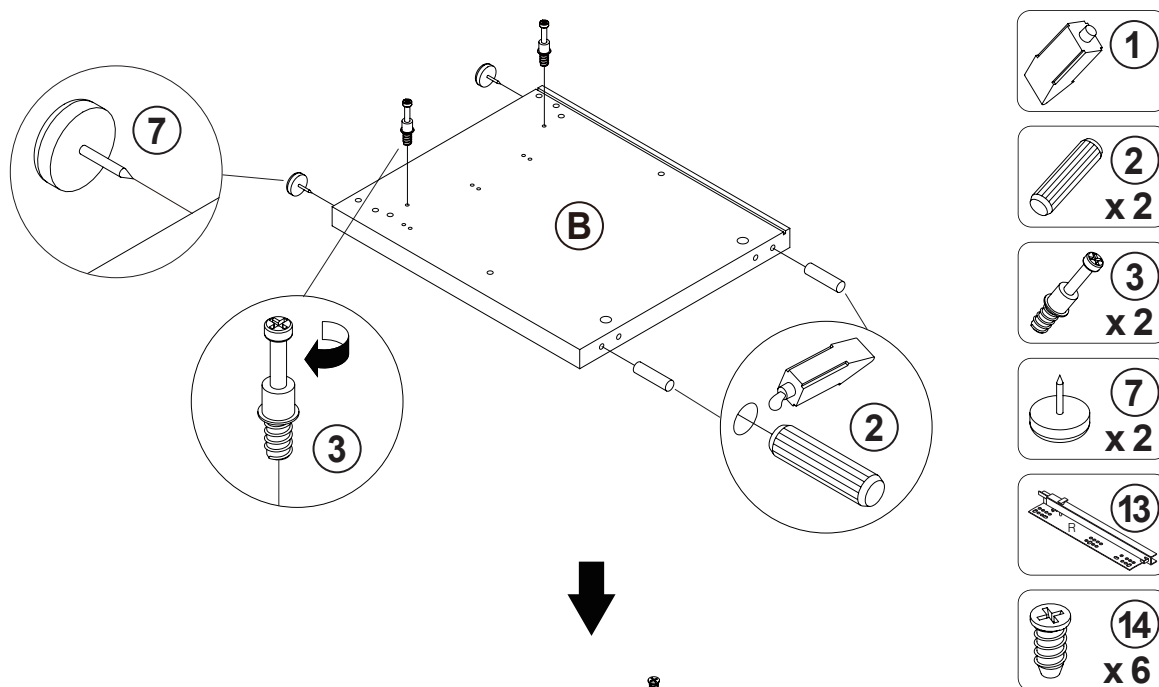
Phillips head screw driver is required in the assembly process; however, manufacturer does not provide this item.

ITEM: **706213**

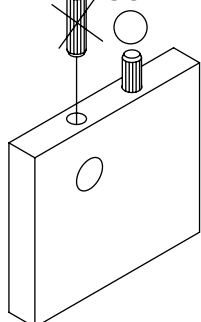
**STEP 1**



**STEP 2**



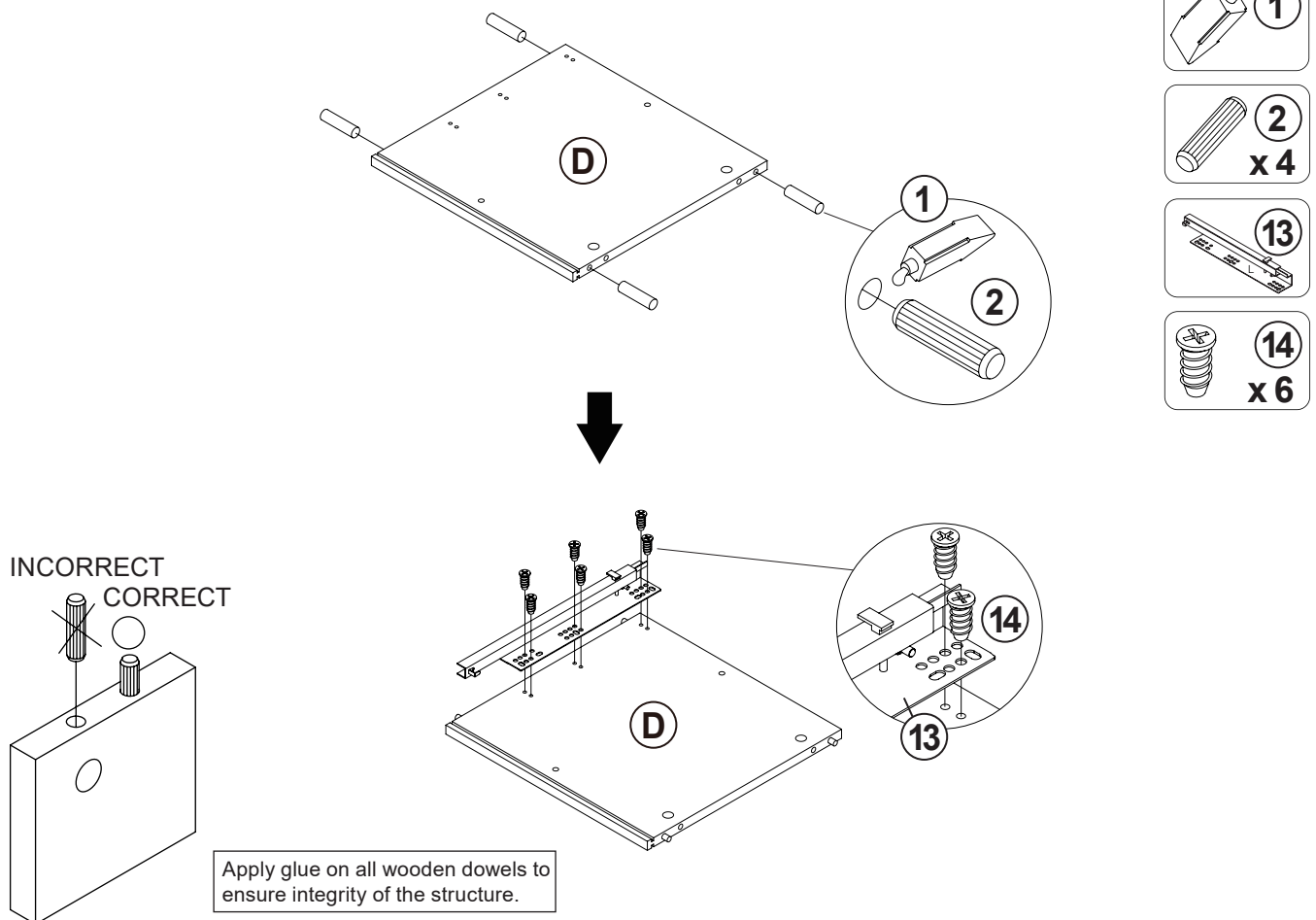
INCORRECT  
CORRECT



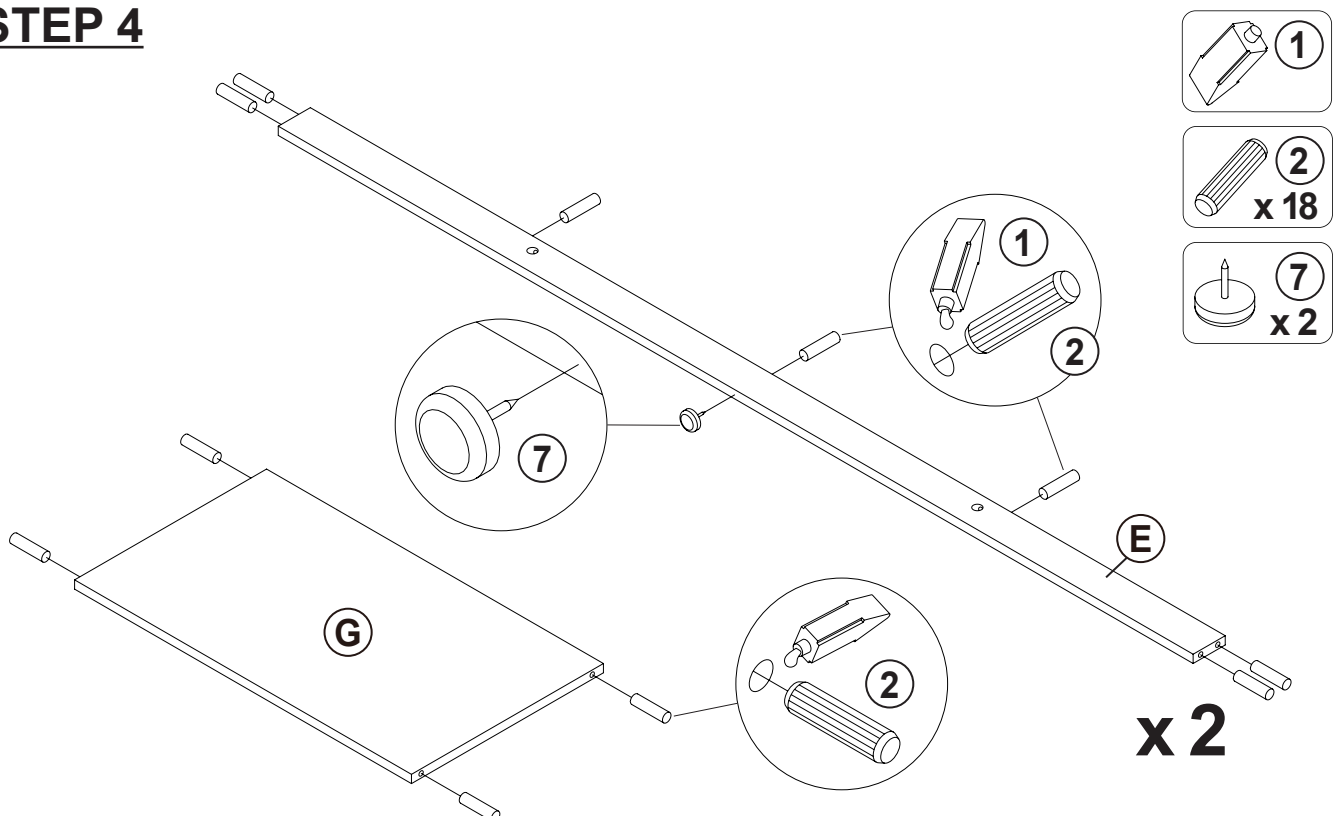
Apply glue on all wooden dowels to ensure integrity of the structure.

ITEM: **706213**

**STEP 3**

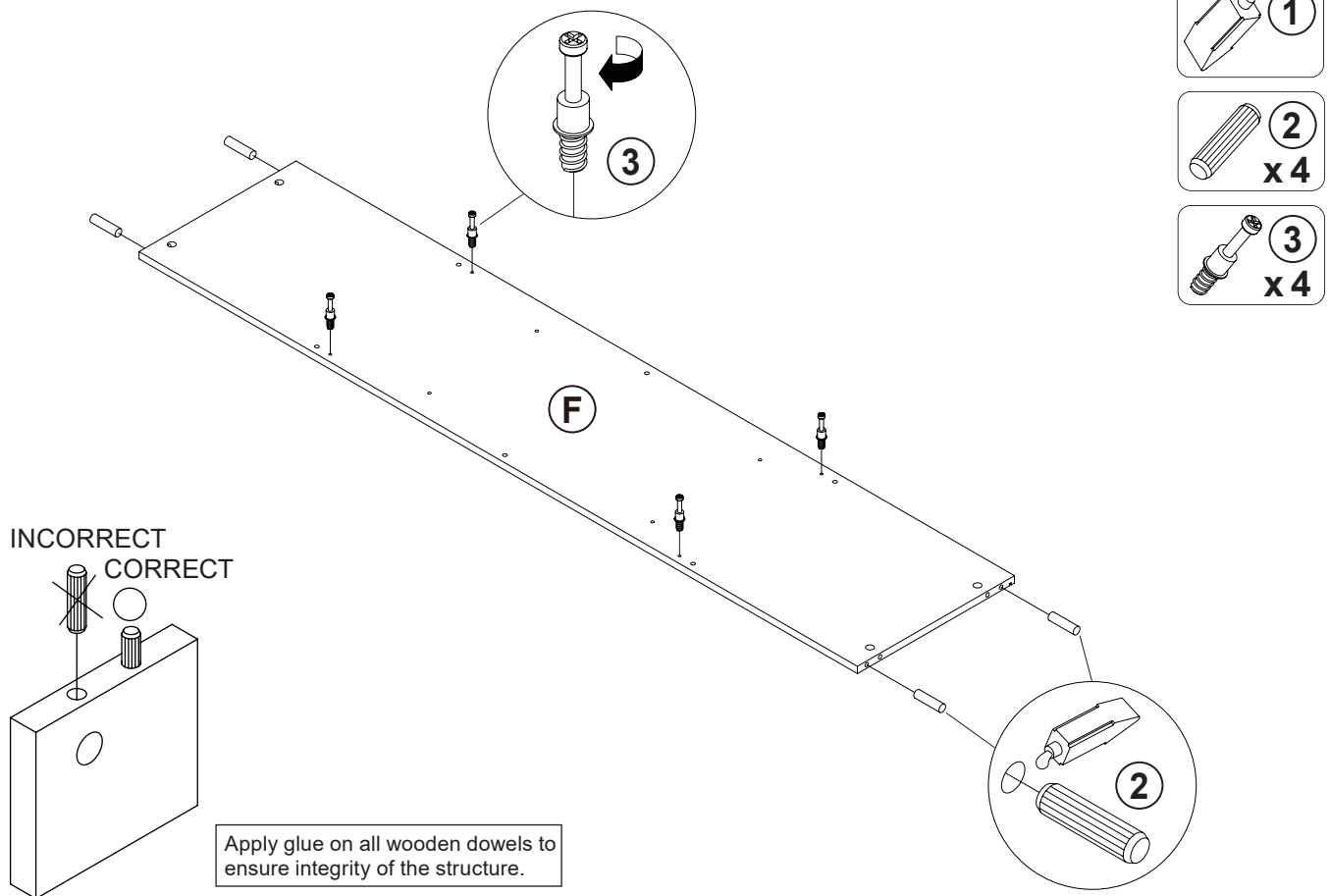


**STEP 4**

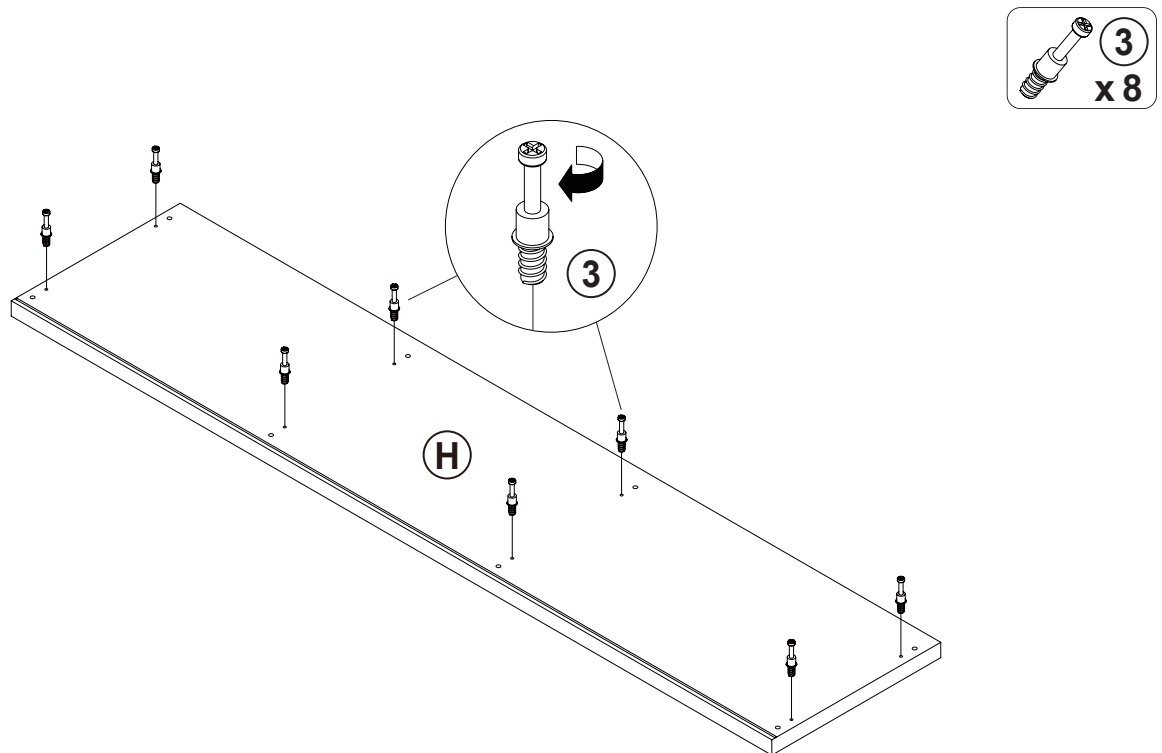


ITEM: **706213**

**STEP 5**



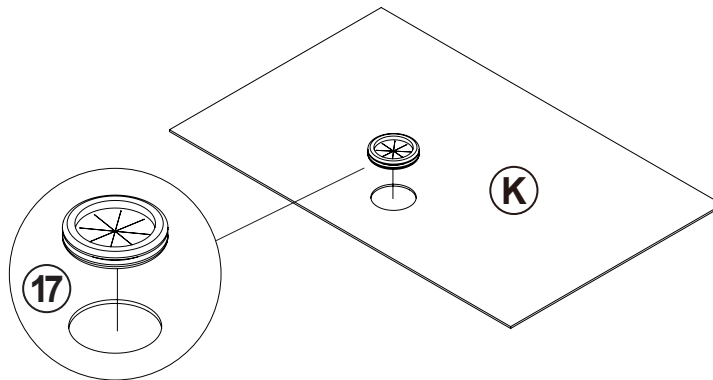
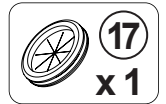
**STEP 6**



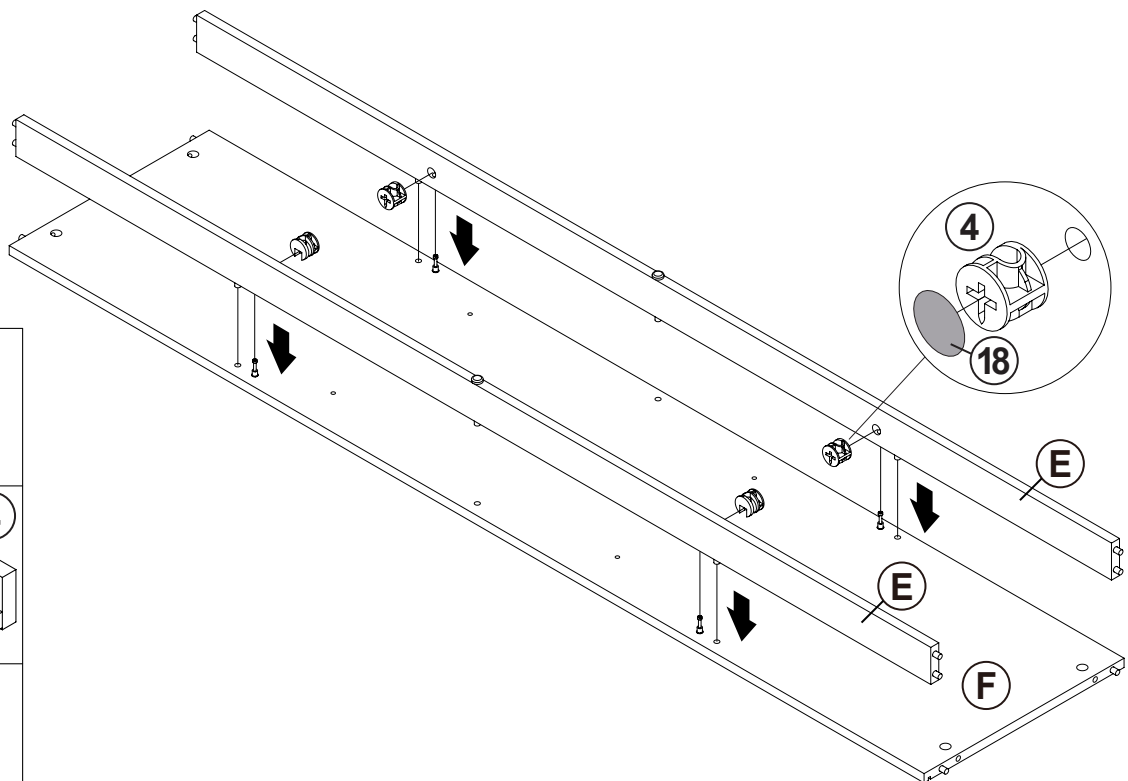
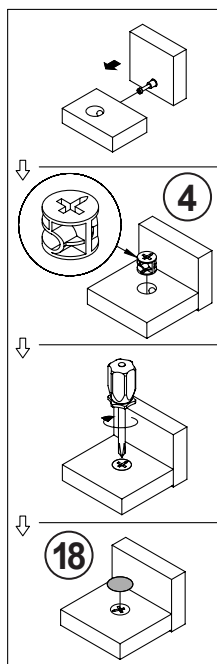
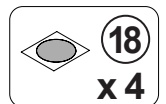
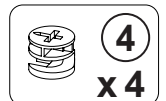
ITEM: **706213**

**STEP 7**

**COASTER**  
FINE FURNITURE



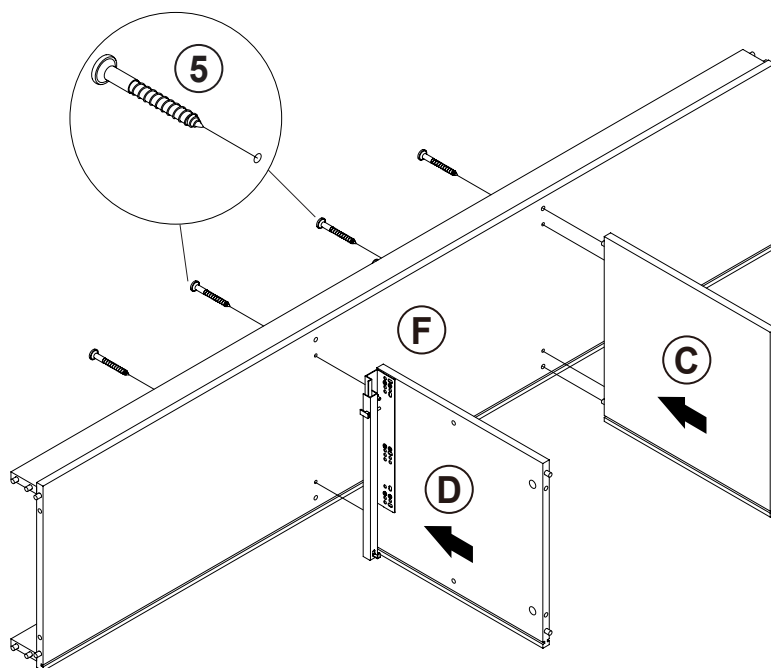
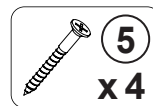
**STEP 8**



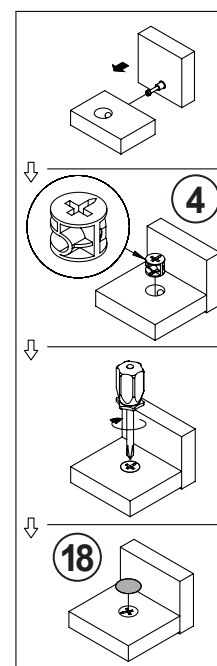
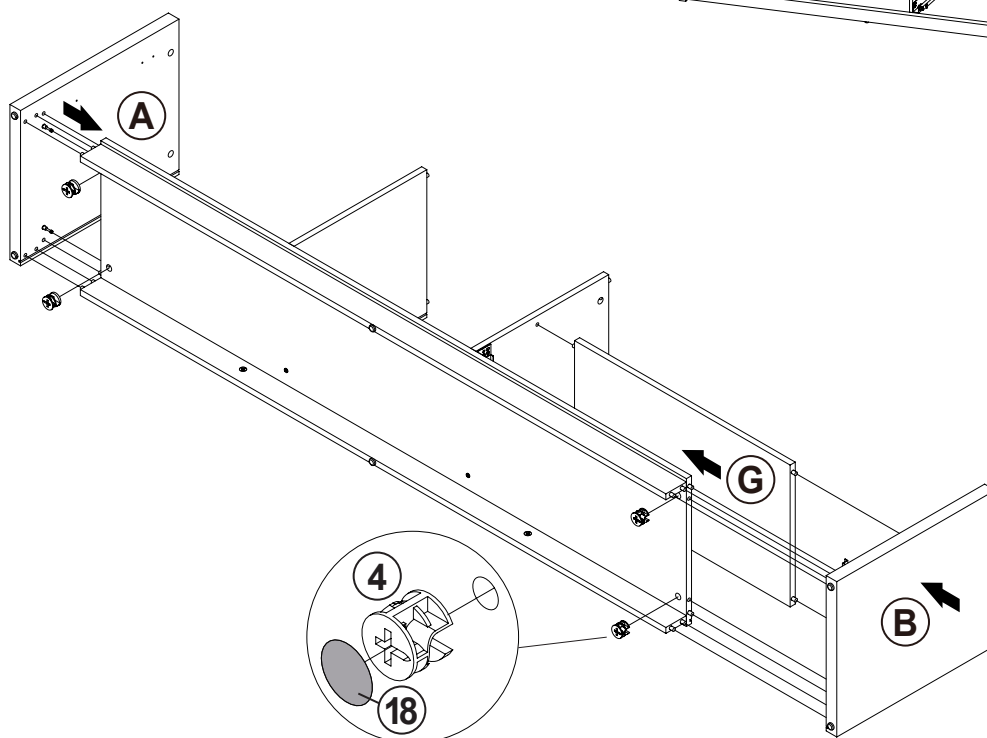
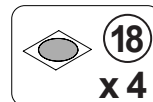
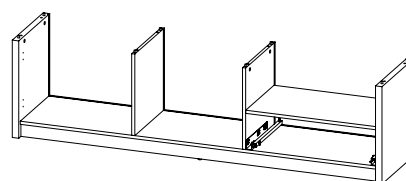
ITEM: **706213**

**STEP 9**

**COASTER**  
FINE FURNITURE



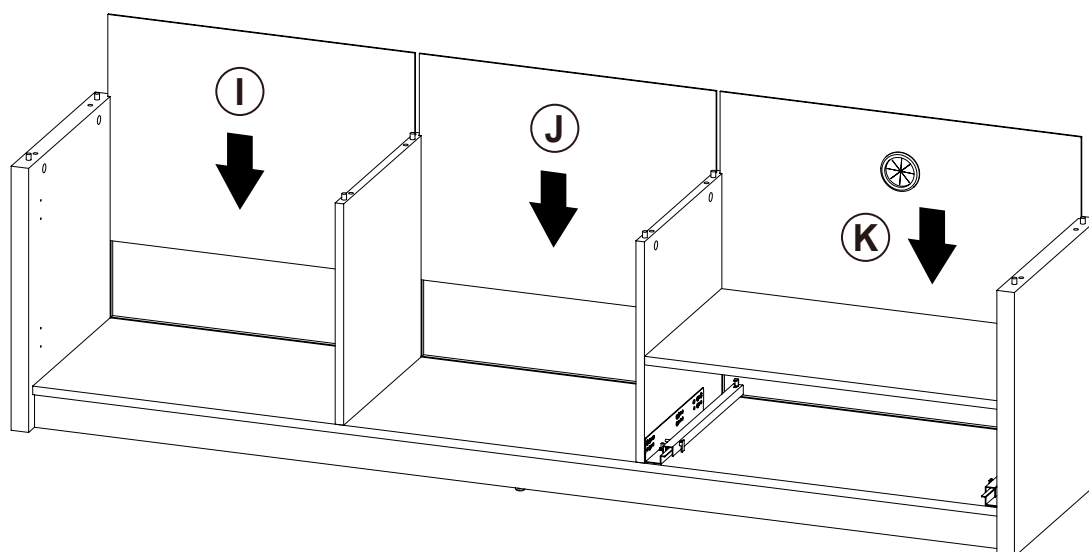
**STEP 10**



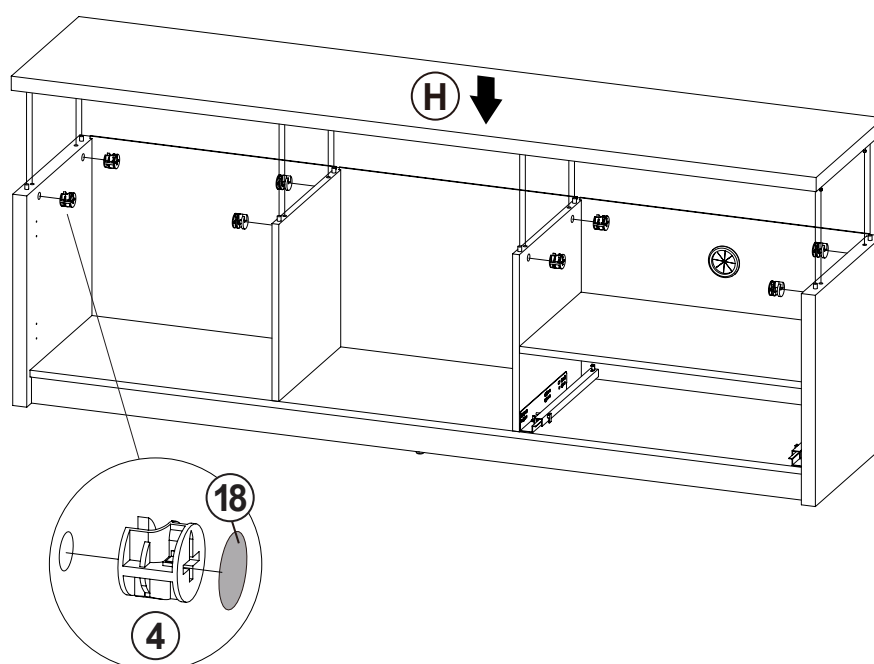
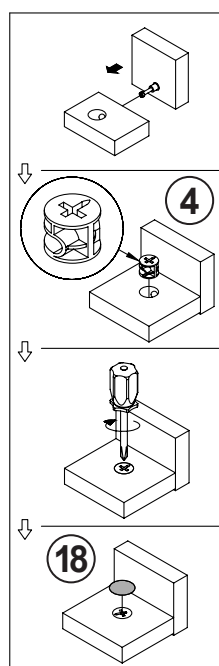
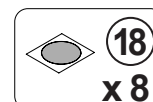
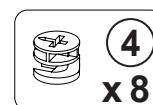


ITEM: **706213**

**STEP 11**



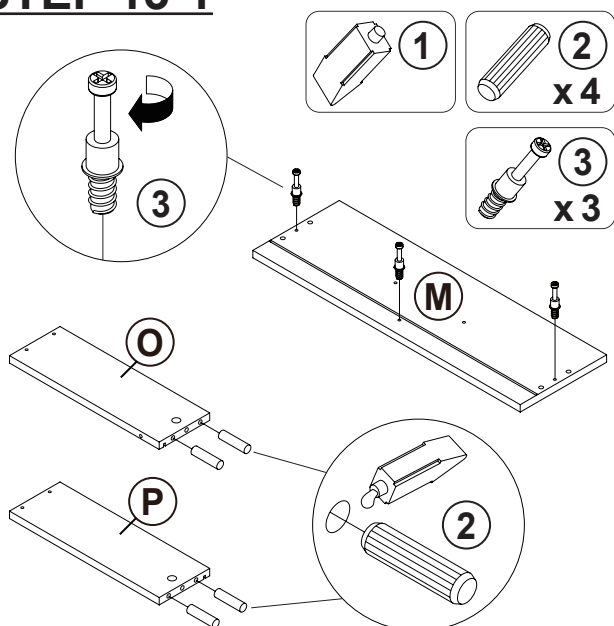
**STEP 12**



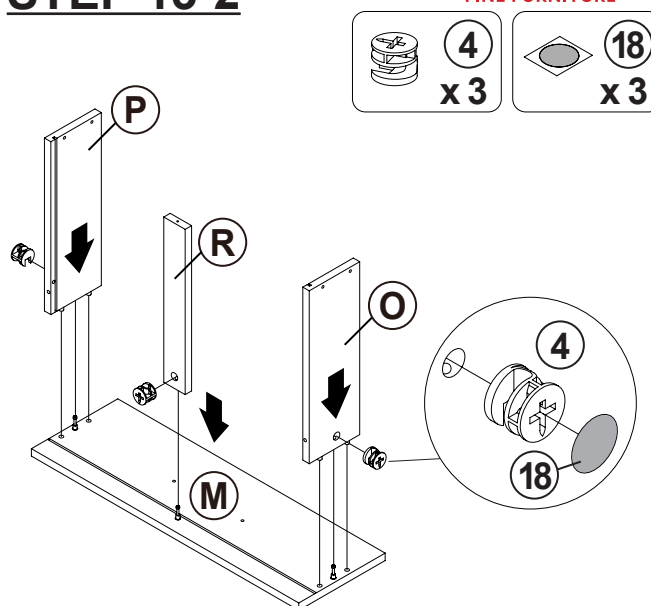
ITEM: **706213**

**COASTER**  
FINE FURNITURE

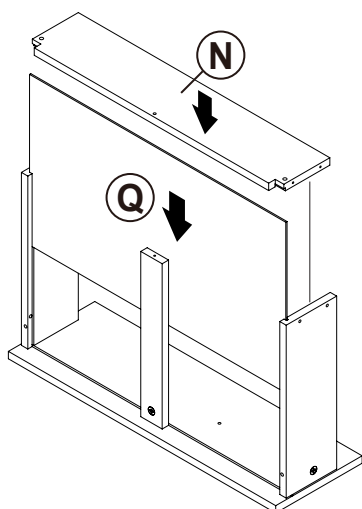
### STEP 13-1



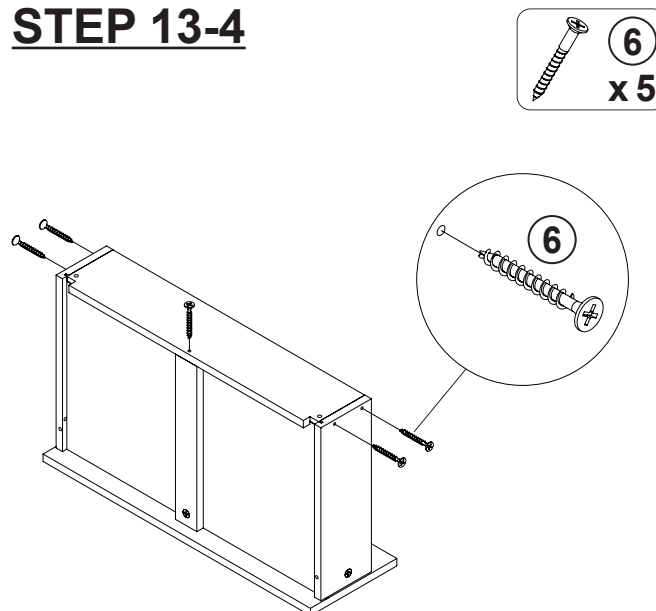
### STEP 13-2



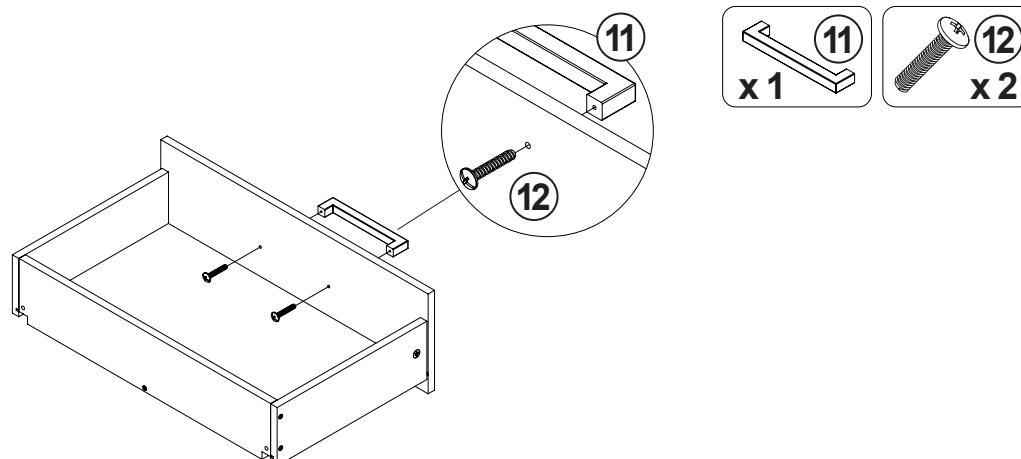
### STEP 13-3



### STEP 13-4

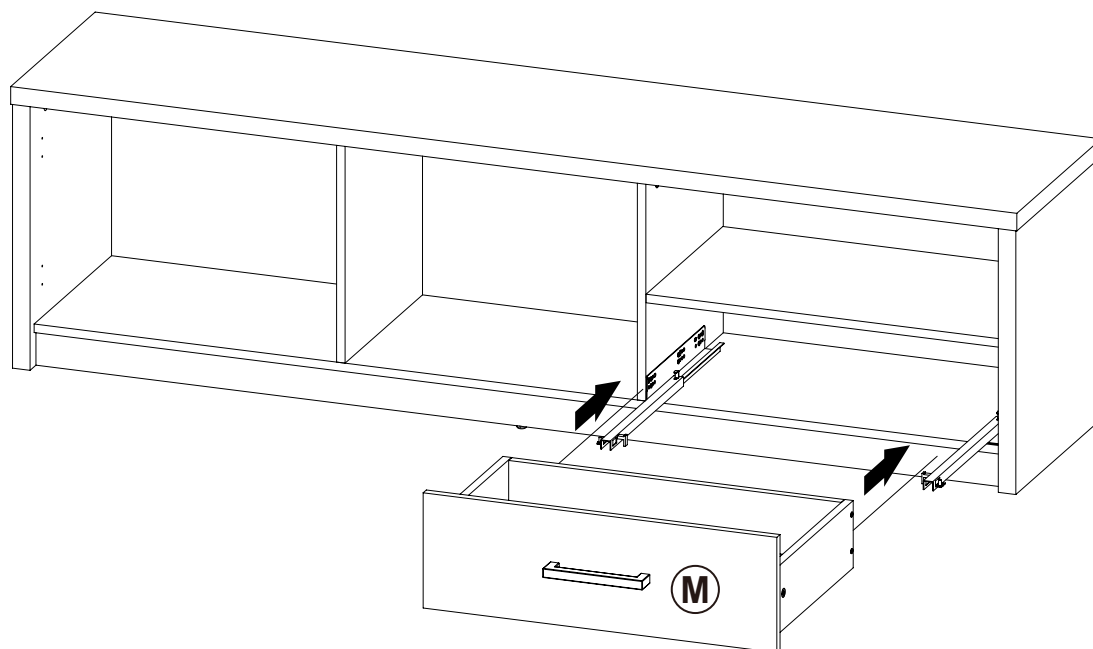


### STEP 13-5

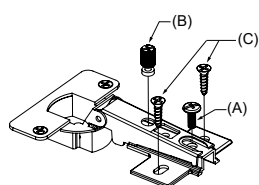


ITEM: **706213**

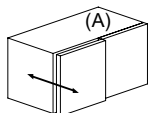
**STEP 14**



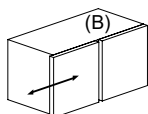
**STEP 15**



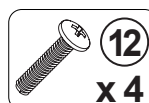
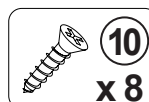
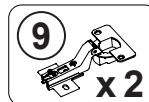
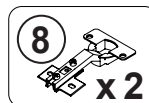
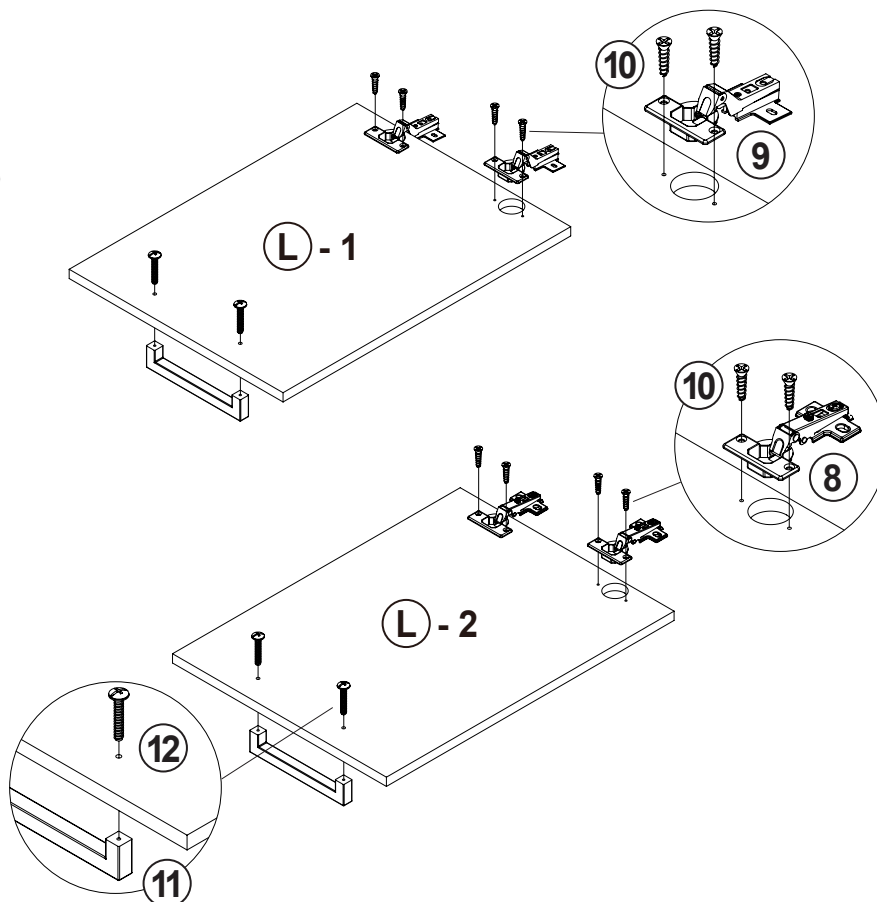
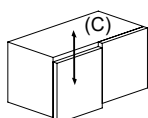
HORIZONTAL BY  
SCREW A ADJUSTMENT



LATERAL BY  
SCREW B ADJUSTMENT



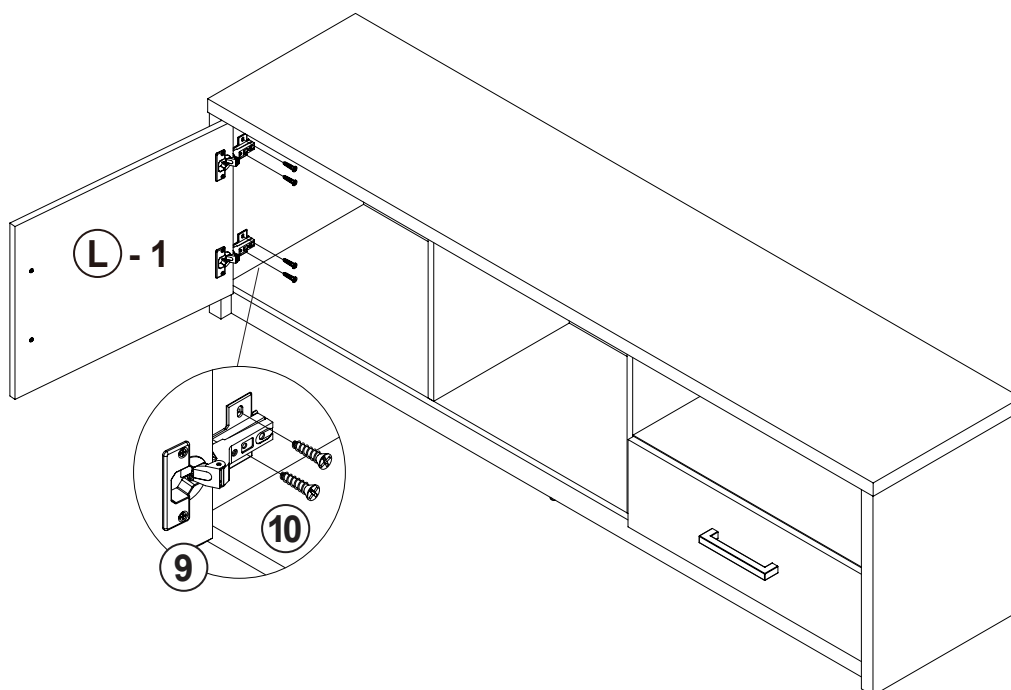
VERTICAL BY  
SCREW C ADJUSTMENT



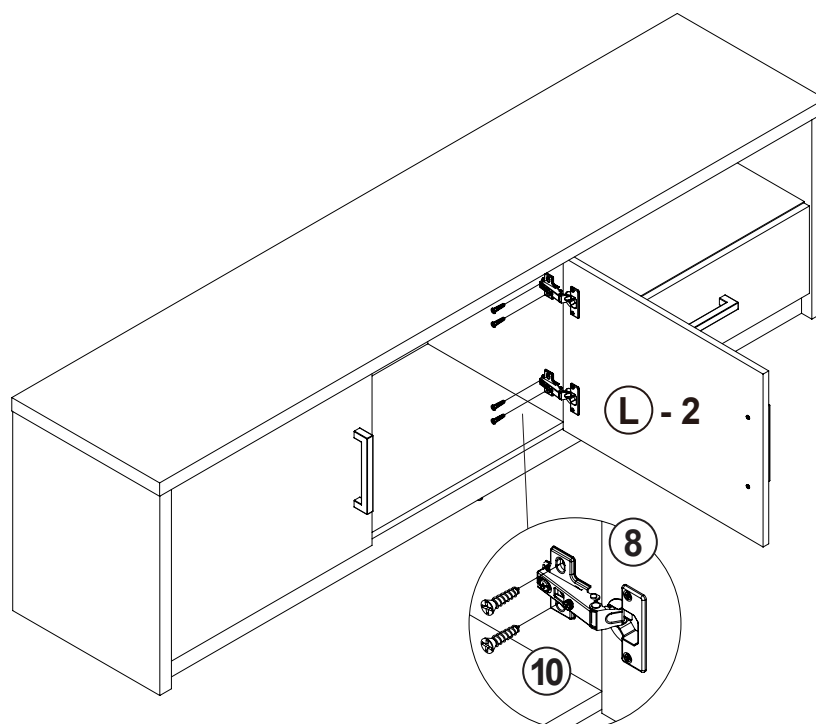
ITEM: **706213**

**STEP 16**

**COASTER**  
FINE FURNITURE



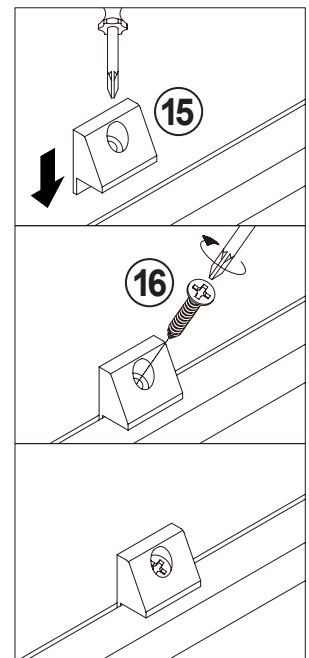
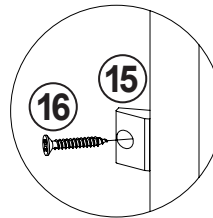
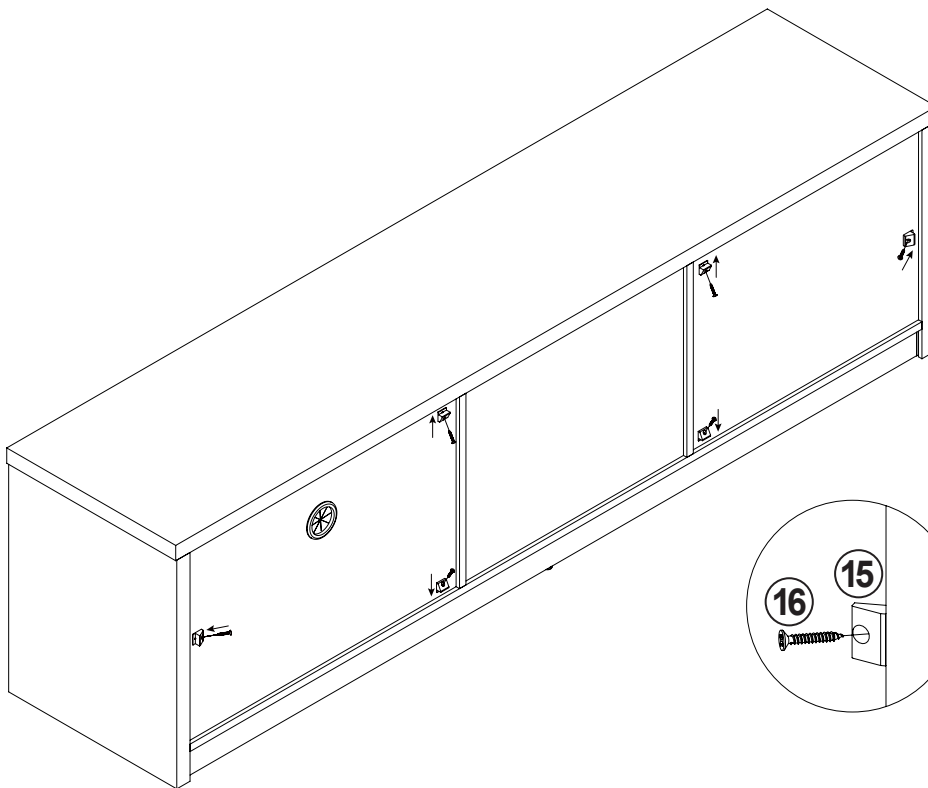
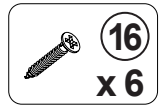
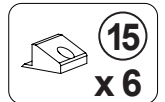
**STEP 17**



ITEM: **706213**

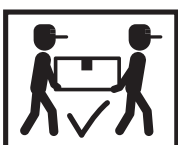
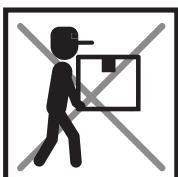
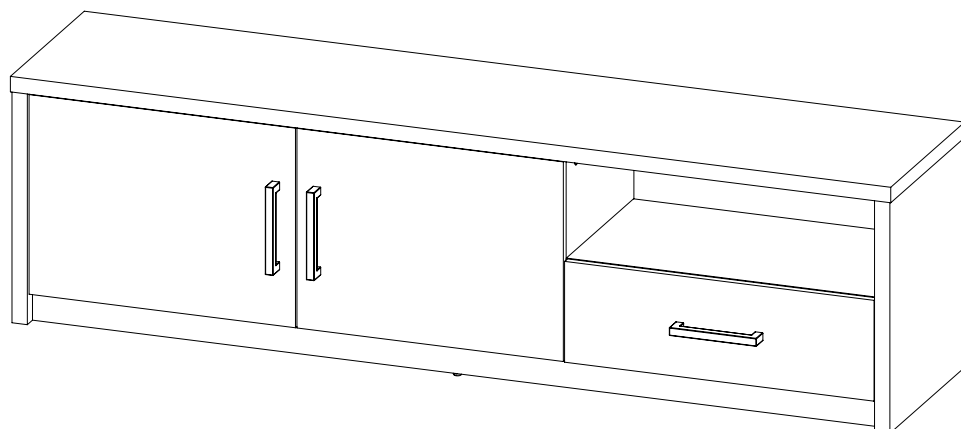
**STEP 18**

**COASTER**  
FINE FURNITURE



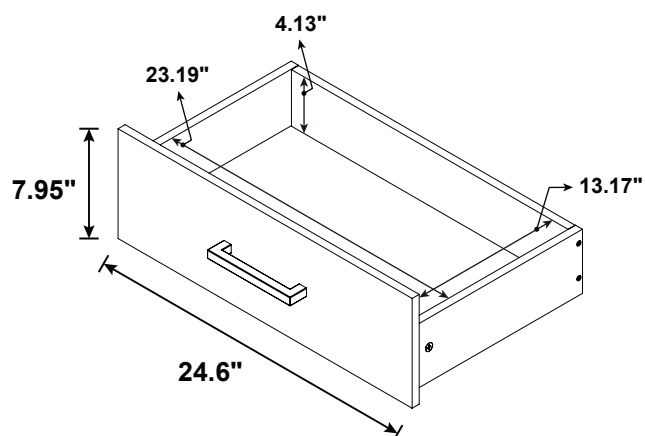
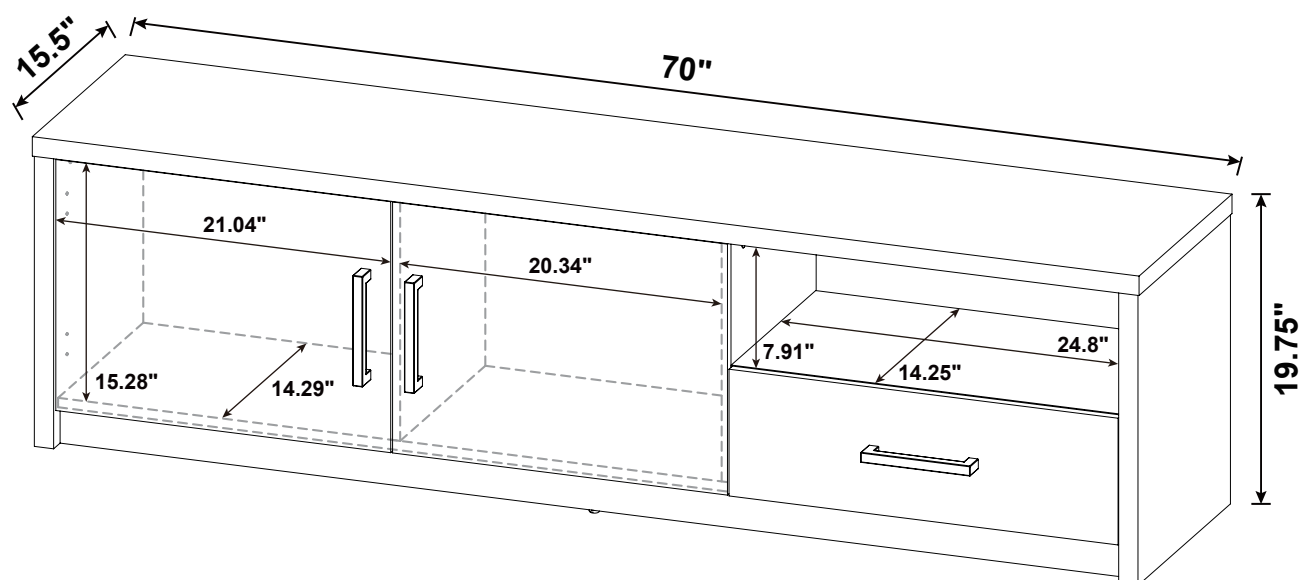
**STEP 19**

**COMPLETE**



ITEM: 706213

**COASTER**  
FINE FURNITURE



**Note :** Dimension tolerance  $\pm 5\%$