



*ASSEMBLY INSTRUCTIONS
COASTER FINE FURNITURE*



Fine Furniture for every stage of life

551622

CORNER

REVISION 0 : 11/12/2021
REVISION 1 : 08/02/2022
REVISION 2 : 07/28/2025

PAGE 1 OF 5

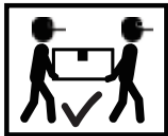
COASTERFURNITURE.COM

ITEM: 551622

ASSEMBLY INSTRUCTIONS



- ASSEMBLY TIPS:
- 1. Remove hardware from box and sort by size.
 - 2. Please check to see that all hardware and parts are present prior to start of assembly.
 - 3. Please follow attached instructions in the same sequence as numbered to assure fast & easy assembly.
- WARNING!**
- 1. Don't attempt to repair or modify parts that are broken or defective. Please contact the store immediately.
 - 2. This product is for home use only and not intended for commercial establishments.



ASSEMBLY TIME

5 MINUTES

PARTS IDENTIFICATION

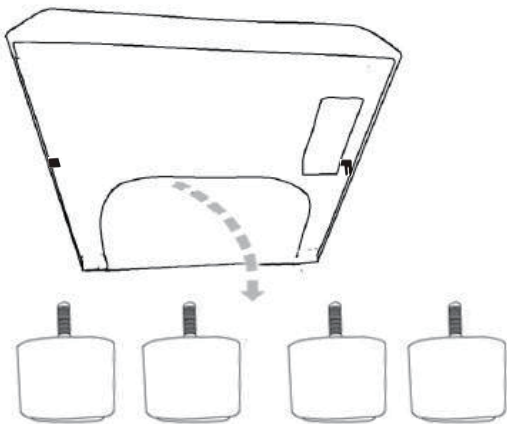
	PART NAME	FIGURE	QUANTITY
A	CORNER	A line drawing of a square corner piece with rounded edges and a small notch on one side.	1PC
B	LEG	A line drawing of a rectangular leg with a small circular base and a small rectangular protrusion on the side.	4PCS

ITEM: 551622

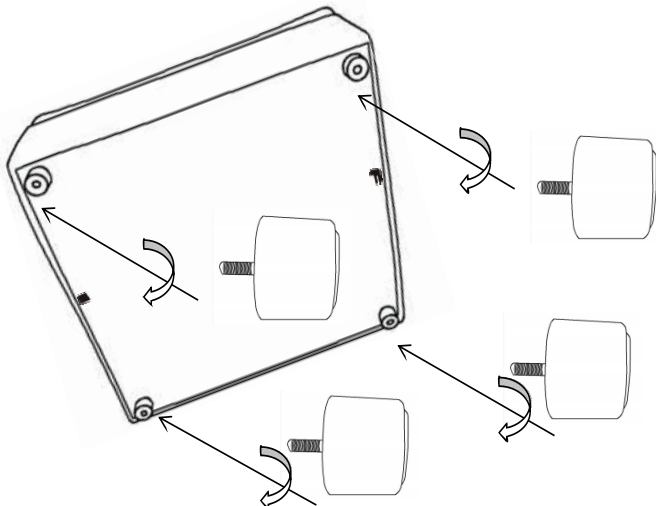
ASSEMBLY INSTRUCTIONS



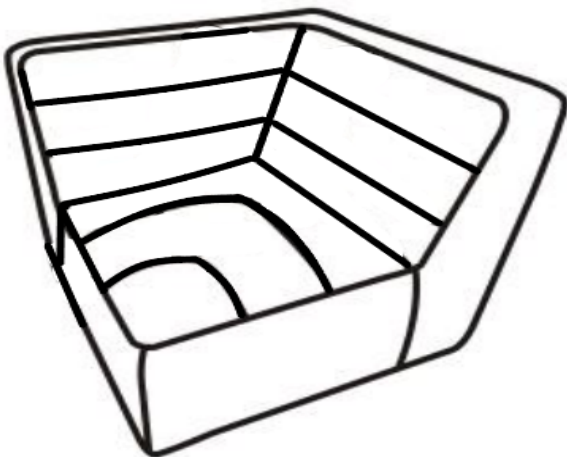
STEP 1



STEP 2



STEP 3
COMPLETE

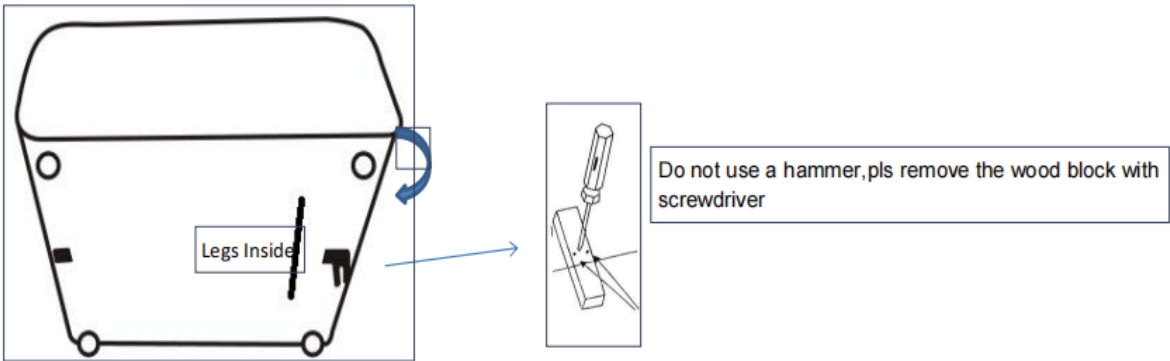


ITEM: 551622

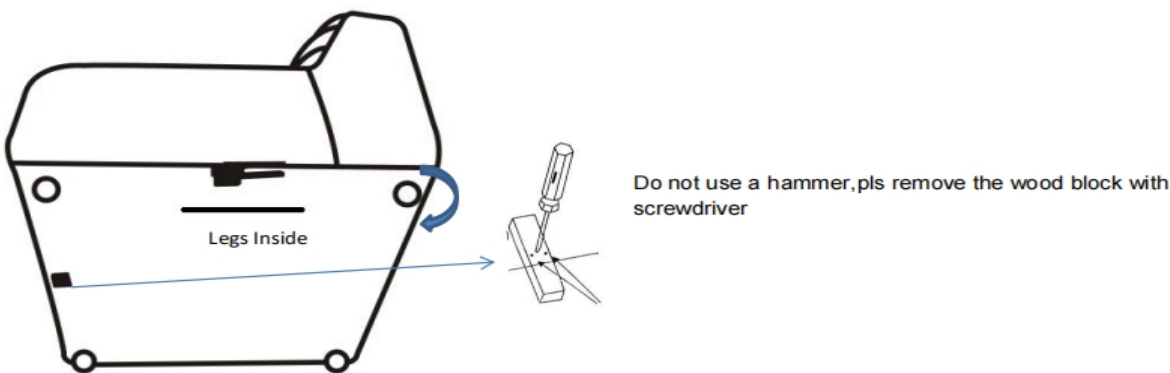
ASSEMBLY INSTRUCTIONS



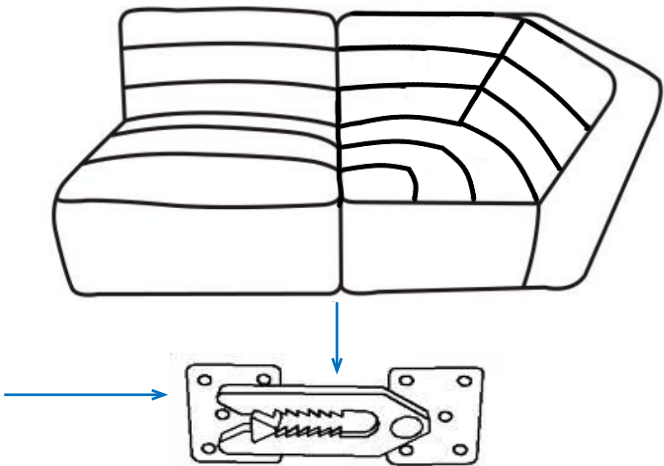
STEP 1 Turn over the item and take out the legs from zippered pouch and install the legs as pictures show



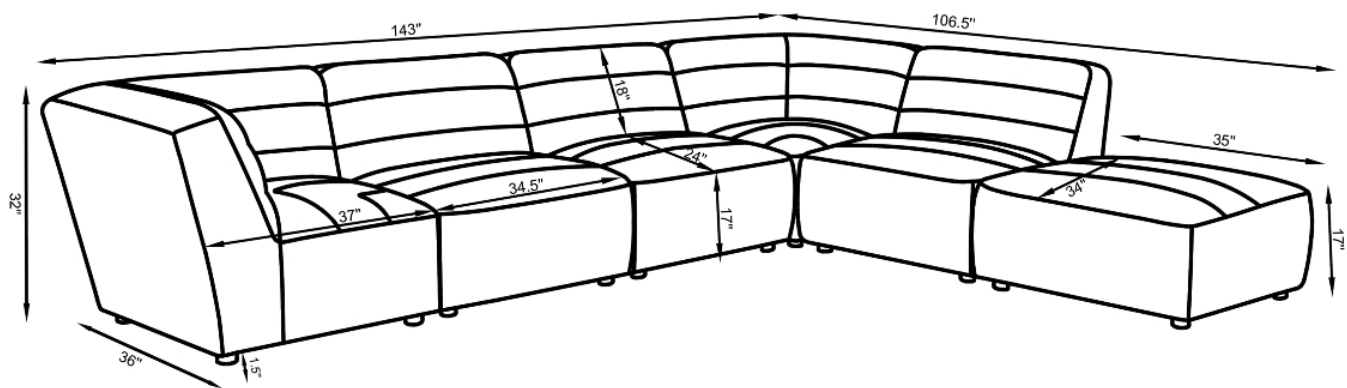
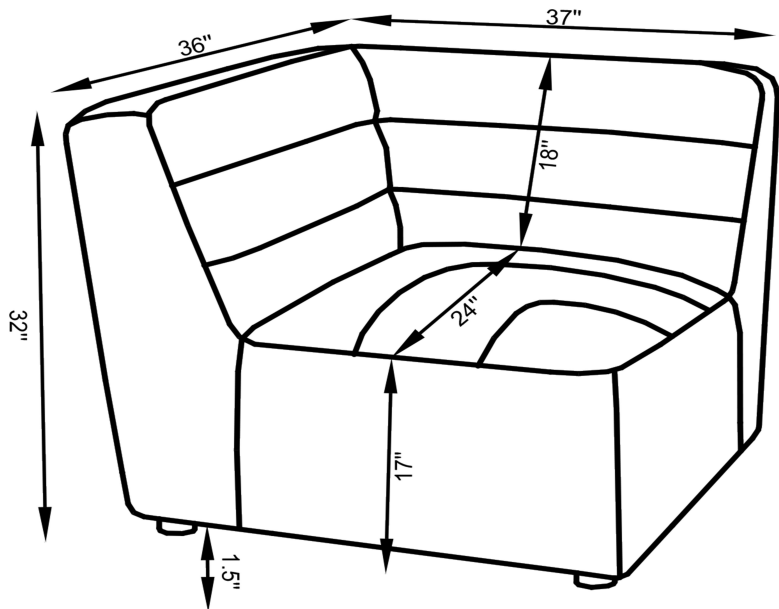
STEP 2



STEP3:Insert the metal grooves to connect other units as pictures show



ITEM: 551622



Note:Dimension tolerance $\pm 5\%$

