



ASSEMBLY INSTRUCTIONS
COASTER FINE FURNITURE



Fine Furniture for every stage of life

551621

ARMLESS CHAIR

REVISION 0 : 11/12/2021
REVISION 1 : 08/02/2022
REVISION 2 : 07/28/2025

PAGE 1 OF 5

COASTERFURNITURE.COM

ITEM: 551621

ASSEMBLY INSTRUCTIONS



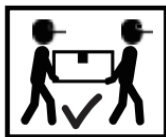
ASSEMBLY TIPS:

- 1. Remove hardware from box and sort by size.
- 2. Please check to see that all hardware and parts are present prior to start of assembly.
- 3. Please follow attached instructions in the same sequence as numbered to assure fast & easy assembly.



WARNING!

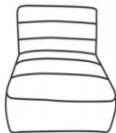

- 1. Don't attempt to repair or modify parts that are broken or defective. Please contact the store immediately.
- 2. This product is for home use only and not intended for commercial establishments.



ASSEMBLY TIME

5 MINUTES

PARTS IDENTIFICATION

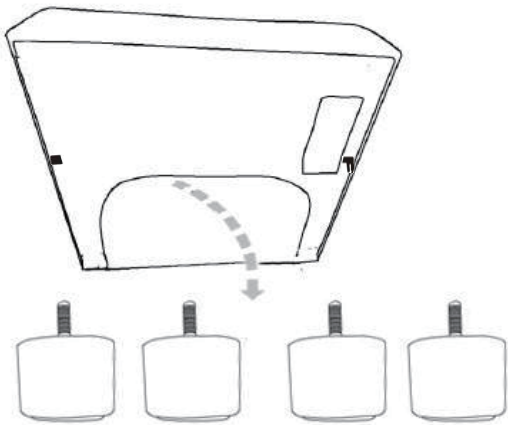
	PART NAME	FIGURE	QUANTITY
A	ARMLESS CHAIR		1PC
B	LEG		4PCS

ITEM: 551621

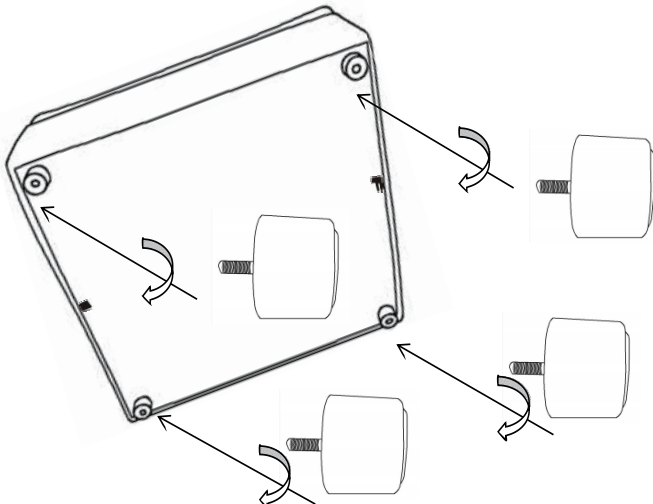
ASSEMBLY INSTRUCTIONS



STEP 1



STEP 2



STEP 3
COMPLETE

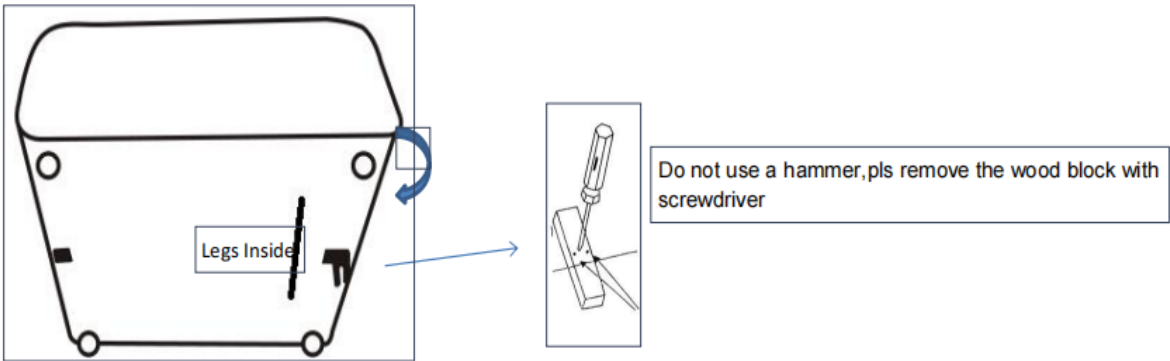


ITEM: 551621

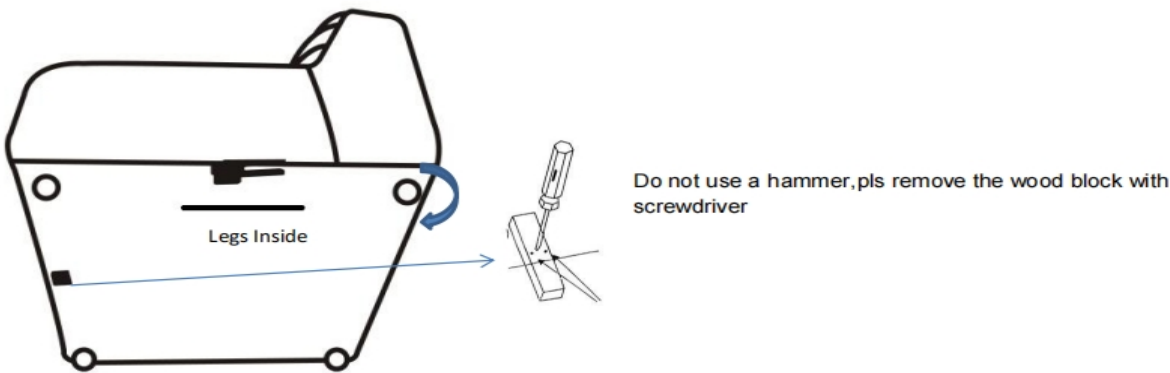
ASSEMBLY INSTRUCTIONS



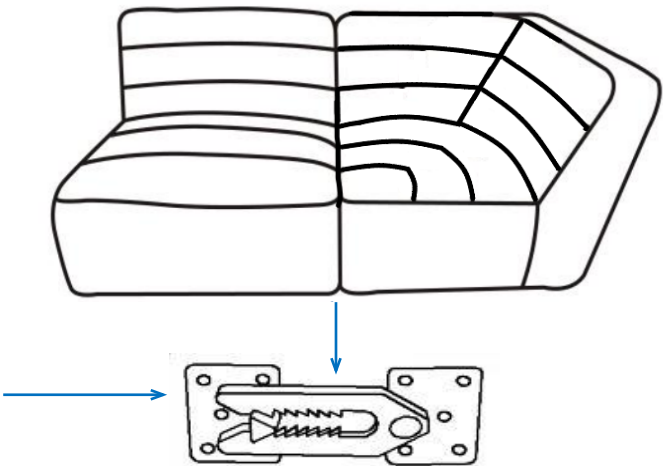
STEP 1 Turn over the item and take out the legs from zippered pouch and install the legs as pictures show



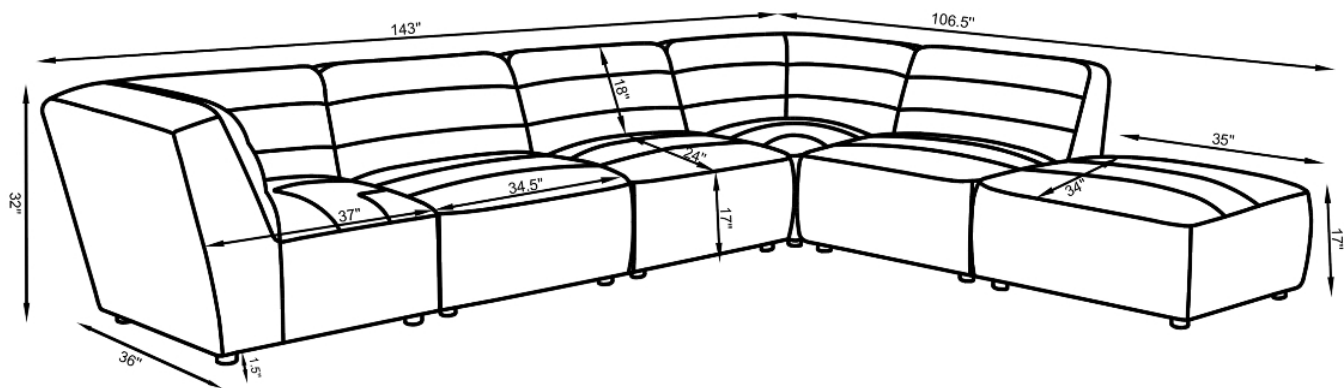
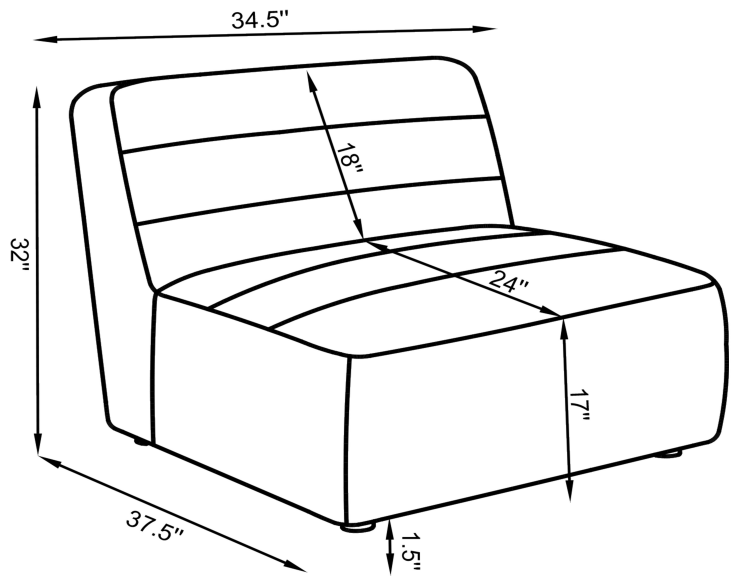
STEP 2



STEP3:Insert the metal grooves to connect other units as pictures show



ITEM: 551621



Note:Dimension tolerance \pm 5%

